

# 01/2011 Short Sleeve Blouse

By: burda style magazine

<http://www.burdastyle.com/projects/012011-short-sleeve-blouse>

---



Short Sleeve Blouse burda style magazine patterns FAQ

## Materials

silk batiste

---

## Step 1 — Preparation

Größen, Tailles, Sizes						2		3		4		
1	N		L		K		Oberweite Tour de poitrine Bust		Tailleweite Tour des taille Waist		Hüftweite Tour des hanches Hip	
	5'6" 168 cm		5'9" 176 cm		5'3" 160 cm		ins	cm	ins	cm	ins	cm
	US	Eur.	US	Eur.	US	Eur.						
	6	32	6	64	6	16	30	76	23	58	32 ½	82
	8	34	8	68	8	17	31 ½	80	24 ½	62	34	86
	10	36	10	72	10	18	33	84	26	66	35 ½	90
	12	38	12	76	12	19	34 ½	88	27 ½	70	37	94
	14	40	14	80	14	20	36 ½	92	29 ½	74	38 ½	98
	16	42	16	84	16	21	37 ½	96	30 ½	78	40 ½	102
	18	44	18	88	18	22	39 ½	100	32 ½	82	41 ½	106
	20	46	20	92	20	23	41	104	34	86	43 ½	110
	22	48	22	96	22	24	43 ½	110	36 ½	92	45 ½	116
	24	50	24	100	24	25	45 ½	116	38 ½	98	48	122
	26	52	26	104	26	26	48	122	41	104	50 ½	128
	28	54	28	108	28	27	50 ½	128	43 ½	110	52 ½	134
	30	56	30	112	30	28	52 ½	134	45 ½	116	55 ½	140
	32	58	32	116	32	29	55 ½	140	48	122	57 ½	146
	34	60	34	120	34	30	57 ½	146	50 ½	128	60	152

Trace the pattern pieces from the pattern sheet. Follow lines and details for style 102. Trace front facing from piece 1 as a separate pattern piece.

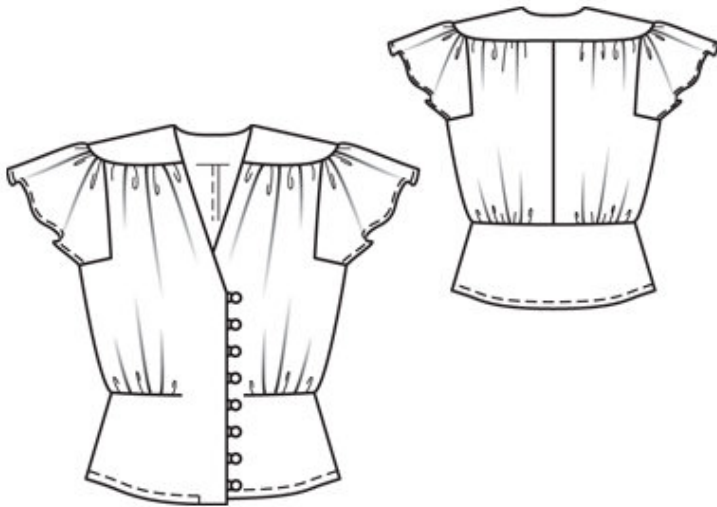
The markings for the loops on piece 1 are for size 38. For sizes 40 — 46, move top marking up the same distance from neck edge. The bottom marking is the same for all sizes. Space the other markings evenly in between.

Seam and hem allowances:

Seams and edges 1.5 cm (5/8 in), hem and sleeve hems 2 cm (3/4 in), horizontal front waist seam 7 mm (1/4 in). Flare sleeve hem allowances.

---

## Step 2 — Cutting out



1 front 2x

2 front facing 2x

3 back 2x

4 sleeve 2x

5 shoulder yoke, on a fold 2x

6 back peplum, on a fold 1x

a) bias strip for 8 loops, 40 cm (16 ins) long, 2 cm (3/4 in) wide (incl. allowance).

Interfacing: See pattern layout. Interface outer yoke piece.

---

### Step 3 — Front

For the horizontal front waist seams, gather upper seam edge from asterisk, first cutting seam allowances of horizontal seam to 2 cm (3/4 in) before pointed end. Stitch horizontal seams, tapering stitching in front as for a dart. Neaten seam allowances together and press down.

---

### Step 4 — Loops

Fold bias strip for loops lengthwise, right side facing in. Stitch 3 mm (1/8 in) from fold edge. Turn right side out. Do not press fabric tube flat. Cut tube into 8 equal pieces. Form pieces in loops. Pin loops to right front edge as marked.

---

## Step 5 — Facings

Pin facings right sides together with front. Stitch along front and neck edges. Trim seam allowances, trimming corners diagonally. Lay facings forward and stitch to seam allowances, close to joining seams. Turn facings to inside and press edges.

---

## Step 6 — Seams

Stitch centre back seam. Trim seam allowances to 7 mm (1/4 in) wide, neaten together, and press to one side.

---

## Step 7 — Sleeves

Press sleeve hem allowances to inside, turn in, and stitch. Stitch sleeves to fronts and back, from upper edge to each corner (seam numbers 1 and 2). Clip allowance of fronts and of back into corners. Stitch sleeves to horizontal edges of armholes — side seam allowances extend. Neaten seam allowances together and press onto fronts and back.

---

## Step 8 — Shoulder yoke

Gather upper edges of fronts and back each between asterisks and stitch to outer yoke piece, matching sleeve joining seams to seam marks on yoke. Trim seam allowances to a width of 7 mm (1/4 in) and press onto yoke. Lay outer and inner yoke right sides facing and stitch neck edges together. Trim seam allowances. Clip curves several times. Lay inside yoke up and stitch to seam allowances, close to seam. Turn yoke right side out and press edge. Turn in edge of inside yoke and sew to joining seam.

---

## Step 9 — Peplum

Gather lower edge of back. Stitch back peplum to back piece.

---

## Step 10 — Side seams

Stitch side seams (seam number 4). Sew upper ends of seam allowances in place.

---

## Step 11 — Hem

Unfold front facings at hem. Press hem allowance to inside, turn in, and stitch. Lay facings to inside again and sew to hem allowance.

---

## Step 12 — Buttons

Sew buttons to left front to match loops.

---

**BurdaStyle**

01/2011 Short Sleeve Blouse