

11/2010 Cropped trousers

By: burda style magazine

<http://www.burdastyle.com/projects/112010-cropped-trousers>



Cropped trousers burda style magazine patterns FAQ

Materials

gabardine

Step 1 — Preparation

Größen, Tailles, Sizes						2		3		4		
1	N		L		K		Oberweite Tour de poitrine Bust		Tailleweite Tour des taille Waist		Hüftweite Tour des hanches Hip	
	5'6" 168 cm		5'9" 176 cm		5'3" 160 cm		ins	cm	ins	cm	ins	cm
	US	Eur.	US	Eur.	US	Eur.						
	6	32	6	64	6	16	30	76	23	58	32 ½	82
	8	34	8	68	8	17	31 ½	80	24 ½	62	34	86
	10	36	10	72	10	18	33	84	26	66	35 ½	90
	12	38	12	76	12	19	34 ½	88	27 ½	70	37	94
	14	40	14	80	14	20	36 ½	92	29 ½	74	38 ½	98
	16	42	16	84	16	21	37 ½	96	30 ½	78	40 ½	102
	18	44	18	88	18	22	39 ½	100	32 ½	82	41 ½	106
	20	46	20	92	20	23	41	104	34	86	43 ½	110
	22	48	22	96	22	24	43 ½	110	36 ½	92	45 ½	116
6	38 ½	98	48	122	24	50	24	100	24	25	45 ½	11
2	41	104	50 ½	128	26	52	26	104	26	26	48	12
8	43 ½	110	52 ½	134	28	54	28	108	28	27	50 ½	12
4	45 ½	116	55 ½	140	30	56	30	112	30	28	52 ½	13
0	48	122	57 ½	146	32	58	32	116	32	29	55 ½	14
6	50 ½	128	60	152	34	60	34	120	34	30	57 ½	14

Trace the pattern pieces from the pattern sheet. Lengthen piece 22 as indicated. Trace the pocket piece from piece 21 as a separate pattern piece – it is the same for all sizes.

The stitching line at the zip slit is marked for size 34. For sizes 36 – 42, mark the stitching line the same distance from centre front as for size 34, noting length of slit.

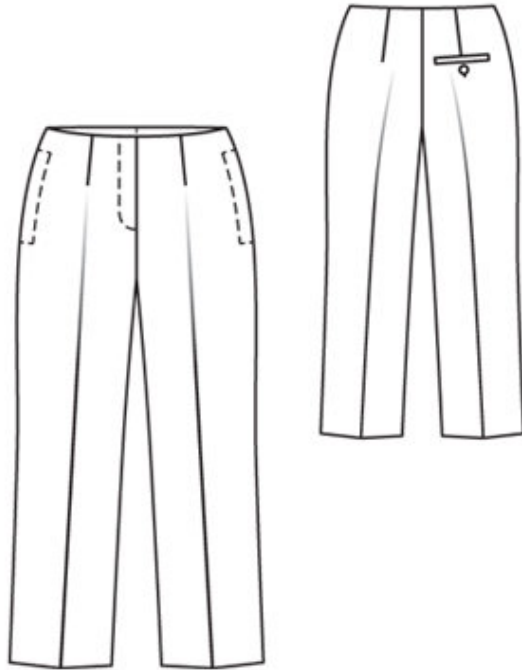
The stitching line at the pocket opening on piece 21 is for size 34. For sizes 36 – 42, mark stitching line the same distance from corresponding size line.

The pocket lines on piece 22 are marked in full for size 34 only. For sizes 36 – 42, complete these lines accordingly. Remark the buttonhole to match.

Seam and hem allowances:

Seams and edges 1.5 cm (5/8 in), hem 4 cm (15/8 ins)

Step 2 — Cutting out



21 front trouser piece 2x

22 pocket piece 4x

23 back trouser piece 2x

24 left underlap piece 2x

a) bias welt strip (back pocket), 15 cm (6 ins) long, 5 cm (2 ins) wide (incl. allowances),

b) 2 pocket pieces (back pocket), 15 cm (6 ins) wide, 12 cm (4 3/4 ins) long (incl. allowances).

Interfacing: See pattern layout. Iron a strip of interfacing, 4 cm (1 5/8 ins) wide, to wrong side of right trousers back, over pocket marking. Iron a strip of interfacing, 3 cm (1 1/4 ins) wide, to wrong sides of front pieces, over pocket openings.

Step 3 — Stretch seam edges

Lay back trouser pieces right sides together. With a steam iron or under a damp cloth, press inside leg seam edges, above marking, to stretch edges to match corresponding edges on front trouser pieces.

Step 4 — Front

Fold front trouser pieces lengthwise, wrong side facing in. Press creases.

Step 5 — Darts

Stitch darts. Press toward centre.

Step 6 — Sew single welt pockets on front trouser pieces

Mark an abutting line for welt, 5 mm (3/16 in) from welt joining line (= finished width of welt). Fold welt strips lengthwise, right side facing out, and press. Baste folded welt strip over welt joining line so that fold edge of welt meets abutting line. Stitch welt in place along welt joining line. Turn seam allowances (open lengthwise edges) back onto welts and pin. Stitch marked joining line on each pocket piece of main fabric right sides together with pocket piece joining line on front trouser piece — side edge of pocket piece points forward. Slash between lines of stitching and clip diagonally toward each last stitch. Do not cut into welts or pocket pieces. Pull pocket pieces to inside. Lay welts into pocket opening and press. Stitch pocket lining pieces to seam allowances of welt joining seams. Fold small triangles at pocket opening ends to inside and stitch to welts and pocket pieces, from seam end to seam end. Stitch pocket pieces together. Mark abutting line for welt 1.2 cm (1/2 in) from welt joining line. Work buttonhole before stitching pocket pieces together, catching the pocket piece which is stitched to welt.

Step 7 — Side seams

Stitch side seams, but do not stitch across pocket openings.

Step 8 — In-seam pockets:

Pin pocket pieces right sides together with seam allowances of pocket opening edges. Stitch pocket pieces in place, close to side seams and along seam lines at pocket openings. Press seams open, pressing pocket pieces apart. Topstitch front pocket opening edges as marked. Press remaining pocket pieces forward. Stitch pocket pieces together and baste to wrong side of trouser fronts.

Step 9 — Leg seams

Stitch inside leg seams. Stitch centre front seam below slit mark, then stitch centre back seam. Press allowances of centre back seam open, from upper edge to beginning of curve. Do not press seam allowances flat along curve.

Step 10 — Zip opening and upper edge of trousers

Press self-facings on front slit edges to inside. Stitch along centre front on the right and 5 mm (3/16 in) before centre front on the left. Stitch zip under left slit edge (underlap), stitching close to teeth of zip. Pin slit closed, matching centre fronts. Stitch loose zip tape to right facing, not catching trouser piece. Stitch pieces for underlap right sides together, leaving straight joining edge open. Trim seam allowances. Turn underlap right side out and press. Neaten joining edges together. Lay underlap under left slit edge and pin to facing — seam allowance on upper edge of trousers extends past upper edge of underlap. Stitch facing to underlap, close to zip joining seam. Lay right facing to outside and pin to upper edge of trousers. Work from right side to pin petersham ribbon to allowance on upper edge of trousers — ribbon points up. Right end of ribbon lies even with edge of opening. Fold left end of ribbon to inside, over slit edge. Edgestitch petersham ribbon to marked upper edge of trousers. Turn petersham ribbon and right facing to inside. Sew left end of ribbon to joining seam of underlap. Topstitch right slit edge vertically, from upper edge to 3 cm (1 1/4 ins)

before end as marked, catching facing. Lay slit closed again and topstitch to the end, catching underlap. Work a buttonhole in underlap as marked. Sew button to inside of trousers to match buttonhole. Sew lower edge of petersham ribbon to darts and seams.

Step 11 — Hem allowances

Press hem allowances to inside and sew in place by hand. Press creases on back trouser pieces. Press creases in front hem edges.

BurdaStyle

11/2010 Cropped trousers