

08/2010 Short Wide Lapel Coat

By: burda style magazine

<http://www.burdastyle.com/projects/082010-short-wide-lapel-coat>

Short Wide Lapel Coat burda style magazine patterns FAQ

Materials

wool velours

Step 1 — Preparation

Trace the pattern pieces from the pattern sheet. Note lines and details for style 103. Glue pieces 3 and 3a together on the joining lines. Trace the front facing from piece 1 as a separate pattern piece. Mark the buttonholes on piece 1 on the facing only.

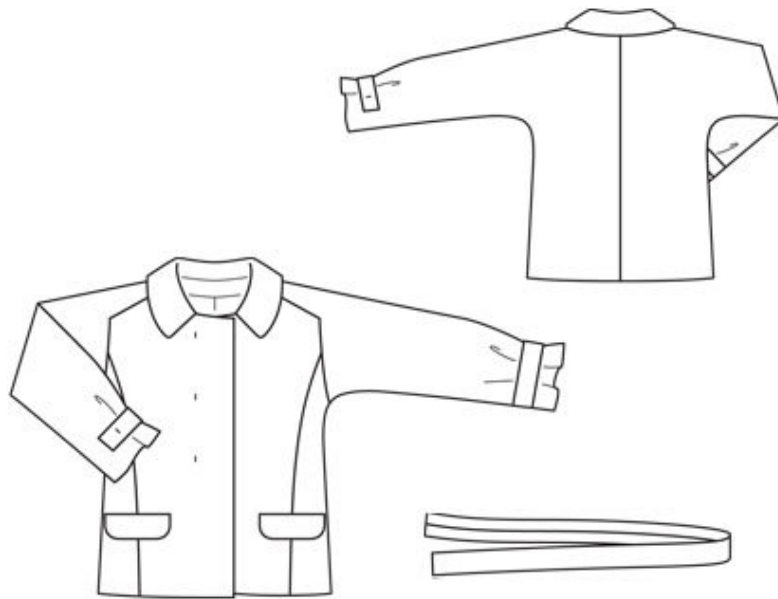
The buttonholes on piece 1 (facing) are marked on the pattern for size 36. Mark the top buttonhole for sizes 38 — 44 the same distance from upper edge as for size 36. The bottom buttonhole is in the same place for all sizes. Centre the remaining buttonhole in between.

The button markings on piece 3 are for size 36. For the other sizes, space the markings the same distance from hem line as for size 36.

Seam and hem allowances:

Seams and edges 1.5 cm (5/8 in), hem and sleeve hems 4 cm (15/8 ins), lining 1.5 cm (5/8 in).

Step 2 — Cutting out



Wool velours

1 centre front 2x

2 front facing 2x

2 side front 2x

3 back with integrated sleeve 2x

4 back facing, on a fold 1x

6 collar, on a fold 2x

7 flap 2x

a) 2 binding strips (flap pockets), 19 cm (7 1/2 ins) long, 4 cm (1 5/8 ins) wide (incl. allowance),

b) 2 pocket pieces, 19 cm (7 1/2 ins) wide, 17 cm (6 3/4 ins) long (incl. allowance),

c) 2 sleeve tabs, 23.5 — 24 — 24.5 — 25 — 25.5 cm (9 1/4 — 9 1/2 — 9 3/4 — 10 — 10 1/8 ins) long, 8 cm (3 1/4 ins) wide, finished width 4 cm (1 5/8 ins),

d) tie belt, a total of 150 — 150 — 170 — 170 — 170 cm (59 — 59 — 67 -67 — 67 ins) long, 8 cm (3 1/4 ins) wide, finished width 4 cm (1 5/8 ins).

Lining: piece 1 minus width of facing; piece 3 minus width of facing and at centre back with an ease pleat of about 2 cm (3/4 in); pieces 2 and 7; and also pocket pieces (piece b).

Interfacing: See pattern layout. Also interface hem allowances.

Step 3 — Front

Stitch side fronts to centre fronts.

Step 4 — Pockets with flaps

Stitch outer edges of each interfaced flap piece to flap piece with no interfacing, right sides together. Turn right side out. Trim seam allowances on joining edge to 1 cm (3/8 in) wide. Stitch flaps in place along joining lines, with flaps pointing up. Fold binding strips lengthwise and press, right side facing out. Baste doubled binding strip in place so that fold edge of binding lies 2.5 cm (1 in) below flap joining seam. Stitch binding in place, 1 cm (3/8 in) from fold edge. These seams should be about 5 mm (3/16 in) shorter at each end than the flap joining seams. Slash between lines of stitching and clip diagonally toward ends of seams. Do not cut into pocket pieces. Lay binding up and press. Press flaps over pocket openings. Stitch pocket lining pieces to seam allowances of binding joining seams and stitch fabric pocket pieces to seam allowances of flap joining seams. Lay pocket pieces down and press. Lay small triangles at pocket opening ends to inside. Stitch to pocket pieces and binding, from seam end to seam end. Trim pocket pieces even and stitch together.

Step 5 — Back

Stitch centre back seam. Lay back right sides together with fronts. Stitch back to each front from neck edge (seam number 2) to corner. Clip seam allowance of back into corner. Stitch integrated sleeves to fronts, from corners (seam number 3).

Step 6 — sleeve tabs

Fold sleeve tabs lengthwise, with wrong side facing in, and press fold edge. Unfold tabs again. Work a buttonhole in inside half of each tab, 1.5 cm (5/8 in) from end (right and left tabs as mirror images). Fold tabs lengthwise, right side facing in. Stitch along lengthwise edges and across end with the buttonhole. Turn right side out. Make a bar of closely spaced zigzag stitching, 1.2 cm (1/2 in) long, 4 cm (15/8 ins) from faced end of each tab and at right angle to buttonhole. Baste tabs to sleeves, between markings.

Step 7 — Side seams and sleeves

Stitch side seams and sleeve seams as continuous seams, clipping seam allowance several times along curves. Press sleeve hem allowances to inside and sew in place by hand.

Step 8 — Buttonholes

Work buttonholes in right front facing. Stitch seams of facing.

Step 9 — Front edges and collar

Pin facing right sides together with jacket. Stitch along front edges and neck edge, to marking. Leave facing lying right sides together with jacket for now. Stitch collar pieces right sides together along outer edges, building a little extra fullness into top collar. Begin and end stitching at narrow edges, exactly on seam line of joining edge. Trim seam allowances. Turn collar right side out and press. Lay collar between jacket and facing. Stitch undercollar to neck edge of jacket and stitch top collar to facing. Press seam allowances open. Turn facing to inside. Pin collar joining seams together. Lay facing in back up again and stitch seam allowances together, close to collar joining seam.

Step 10 — Facings

Unfold facings at hem. Press hem allowance to inside but do not yet sew. Turn facings to inside again.

Step 11 — Pleat

Stitch allowances of centre seam on back lining together, 1 cm (3/8 in) from edge. For ease pleat, stitch along centre back at top and bottom, each about 5 cm (2 ins) long, and baste in between. Press pleat to one side. Stitch seams of lining.

Step 12 — Line jacket, hem

Stitch allowances of centre seam on centre back lining piece together, 1 cm (3/8 in) from edge. For the ease pleat, stitch along centre back, about 5 cm (2 ins) long, each at top and bottom, and baste in between. Press pleat to one side. Stitch seams of lining. Set sleeves into lining. Stitch lining to inside edges of facing, laying hem allowance down. Lay lining inside jacket, with wrong sides facing, pulling linings into sleeves. Lay hem allowance to inside again and sew in place by hand. Turn in lining along lower edge of jacket, press fold lightly, push upward in a shallow curve, and pin to hem allowance. Sew facings and lining in place. Lay extra length of lining down and press lightly. Pin a fold, about 1 cm (3/8 in) deep, in lining, above sleeve hems. Turn in sleeve linings and sew to hem allowances. Lay extra length of sleeve linings down and press.

Step 13 — Tie belt

Fold tie belt lengthwise, right side facing in. Stitch lengthwise edges together, leaving about 5 cm (2 ins) open in centre of seam for turning. Press seam allowances open. Centre seam on belt and stitch across ends. Turn belt right side out. Sew seam opening closed.

Step 14 — Buttons

Sew buttons to left front to match buttonholes. Make bars of closely spaced zigzag stitching, each 1.2 cm (1/2 in) long, 9 cm (35/8 ins) from right front edge and at right angles to buttonholes on facing. Sew buttons for sleeve tabs in place on sleeves, as marked.

BurdaStyle

08/2010 Short Wide Lapel Coat