

# 08/2010 Knee Length Skirt with Lapped Seams

By: burda style magazine

<http://www.burdastyle.com/projects/082010-knee-length-skirt-with->

---

Knee Length Skirt with Lapped Seams burda style magazine patterns FAQ

## Materials

wool

---

## Step 1 — Preparation

Trace the pattern pieces from the pattern sheet. Follow lines and details for style 128.

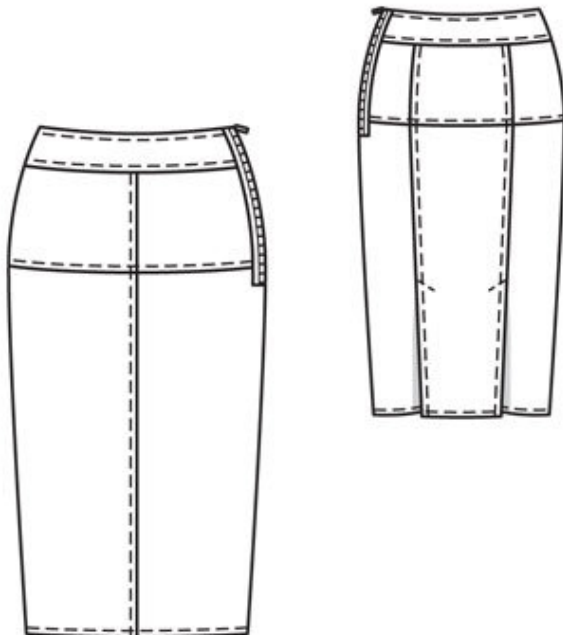
The stitching line at slit on piece 25 is marked for size 38. Mark new stitching line for sizes 40 — 46.

Seam and hem allowances:

Seams and edges 1.5 cm (5/8 in).

---

## Step 2 — Cutting out



Wool fabric:

21 front yoke 2x

22 front skirt panel 2x

23 centre back yoke, on a fold 1x

24 side back yoke 2x

25 centre back skirt panel

— on a fold 1x

26 side back skirt panel 2x

27 front waistband, on a fold 2x

28 back waistband, on a fold 2x

Lining: pieces 21 to 26.

Interfacing: See pattern layout. Cut the interfacing pieces 2 mm (a scant 1/8 in) smaller than the paper pattern pieces.

---

### Step 3 — Lapped seams

Trim away seam allowance on one edge of seam. Baste edge without allowance to seam allowance of other edge, with wrong side facing right side. Edgestitch edge in place and stitch again, 1 cm (3/8 in) from edge.

Note: The seam allowances on lower edges of yoke and hem will be trimmed away. These seams should therefore be secured with backstitching at marked lower edge of yoke and at hem line.

---

### Step 4 — Yoke

Trim away centre seam allowance on right front yoke. Stitch centre seam edge of right front yoke to seam allowance of left front yoke. Trim away seam allowances on section seam edges of centre back yoke. Stitch centre back yoke to seam allowances of side back yokes. Stitch right side seam in the — normal — manner (with right sides facing).

---

### Step 5 — Vents

Trim away seam allowances on section seam edges of centre back skirt panel and allowances on edges of vents. Trim away allowances on underlap edges of side back skirt panels. Topstitch close to vent and underlap edges and topstitch again 1 cm (3/8 in) from edges. Stitch centre back skirt panel to side back skirt panels, stitching diagonally at top of each vent as marked, not catching underlaps. Stitch right side seam in the — normal — manner

---

### Step 6 — Yoke

Trim away seam allowance on lower edge of yoke. Stitch lower edge of yoke to skirt.

---

### Step 7 — Lining

Stitch seams of lining in the — normal — manner.

---

## **Step 8 — Face left side slit edges with lining, left side seam**

Face edges of side left opening with lining. Lay lining right sides together with skirt. Stitch left side edges together, from upper edges to slit mark. Lay lining up and pin. Stitch left side seam of outer fabric. Remove pins. Stitch left side seam of lining. Turn lining to inside. Press edges of slit. Press side seam allowances open. Baste lining to upper edge of skirt. Baste lining to upper edge of skirt.

---

## **Step 9 — Waistband**

Stitch right side seam of waistband units, stitching inside waistband unit as mirror image. Backstitch to secure seams at marked lower edge. Trim away allowance on lower edge of outer waistband. Baste outer waistband to upper edge of skirt and first stitch 1 cm (3/8 in) from edge. Lay inside waistband unit right sides together with outer waistband unit. Stitch across ends of waistband. Turn inside waistband to inside. Baste upper edges of waistband together. Lay inside edge flat over joining seam and baste. Work from right side of garment to stitch close to lower edge of waistband. Topstitch upper edge of waistband, then trim away the seam allowances.

---

## **Step 10 — Zip**

Turn in ends of zip tapes. Work from outside of garment to pin zip to left slit edges so that teeth lie even with edges. Stitch zip in place, close to teeth and close to edges of zip tapes.

---

## **Step 11 — Lower edge**

Trim away allowance on lower edge of skirt. Topstitch close to lower edge.

---

## **Step 12 — Lining**

Trim centre back skirt lining panel across top of vent. Trim vent edges on side skirt lining panels to 3 cm (1 1/4 ins) wide (width of underlap), at the top, trimming in a curve toward centre skirt lining panel. Hem edges of vent narrowly. Turn in hem allowance of lining and stitch so that lining is 2 cm (3/4 in) shorter than skirt.

---

**BurdaStyle**

08/2010 Knee Length Skirt with Lapped Seams