

08/2010 Three quarter sleeve Coat

By: burda style magazine

<http://www.burdastyle.com/projects/082010-three-quarter-sleeve-coat>

Three quarter sleeve Coat burda style magazine patterns FAQ

Materials

wool \hat{A} -velours

Step 1 — Preparation

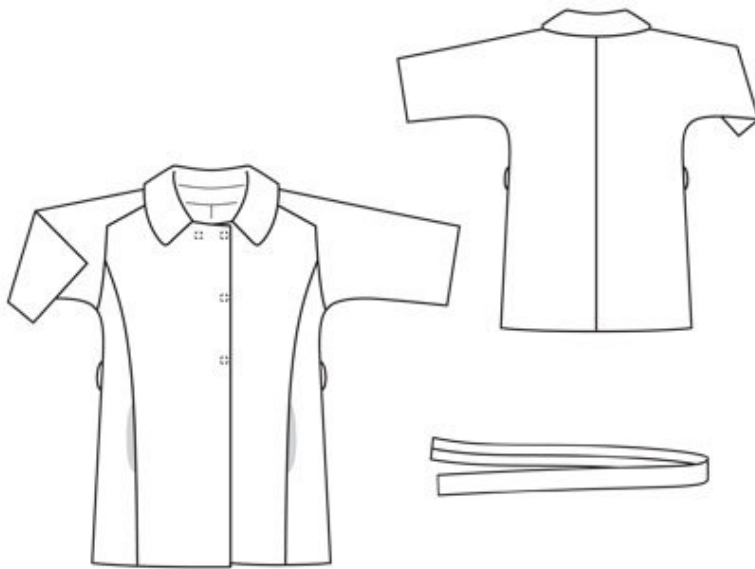
Trace the pattern pieces from the pattern sheet. Note lines and details for style 102. Note different hem lines for views A and B. Glue pieces 3 and 3a together on the joining lines. Trace the front facing from piece 1 as a separate pattern piece. Trace the pocket piece from piece 1 as a separate pattern piece \hat{A} — it is the same for all sizes.

The snap fasteners marked on piece 1 are for size 36. For sizes 38 \hat{A} — 44, mark both top fasteners the same distance from upper edge as for size 36. The bottom fastener is in the same place for all sizes. Centre the remaining snap in between.

Seam and hem allowances:

Seams and edges 1.5 cm (5/8 in), hem and sleeve hems 4 cm (15/8 ins), lining 1.5 cm (5/8 in).

Step 2 — Cutting out



Top fabric:

1 centre front 2x

1 front facing 2x

1 pocket piece 2x

2 side front 2x

3 back with integrated sleeve 2x

4 back facing, on a fold 1x

6 collar, on a fold 2x

a) tie belt, 148 – 148 – 170 – 170 – 170 cm (58 1/4 – 58 1/4 – 67 – 67 – 67 ins) long, 10 cm (4 ins) wide, finished width 5 cm (2 ins). For sizes 40 – 44, cut the belt as two pieces.

Lining: piece 1 minus width of facing; piece 3 minus back facing and at centre back, on a fold with an ease pleat of about 2 cm (3/4 in); piece 2; and also pocket pieces.

Interfacing: See pattern layout. Also interface hem allowances.

Step 3 — Front

Stitch side fronts to centre fronts.

Step 4 — In-seam pockets

Pin pocket pieces right sides together with seam allowances of pocket opening edges – pocket lining pieces in front and pocket pieces of main fabric in back. Stitch pocket pieces in place, directly along marked seam lines. Press pocket pieces forward and stitch together.

Step 5 — Back

Stitch centre back seam. Lay back right sides together with fronts. —Stitch back to each front, from neck edge (seam number 2) to corner. Clip seam allowance of back into corner. Stitch integrated sleeves to fronts, from corners (seam number 3).

Step 6 — Side seams

Stitch side seams and sleeve seams each as continuous seam, clipping seam allowance several times along curve. Press sleeve hem allowances to inside and sew in place by hand. Stitch seams of facing.

Step 7 — Front edges and collar

Pin facing right sides together with jacket. Stitch along front edges and neck edge, to marking. Leave facing lying right sides together with jacket for now. Stitch collar pieces right sides together along outer edges, building a little extra fullness into top collar. Begin and end stitching at narrow edges, exactly on seam line of joining edge. Trim seam allowances. Turn collar right side out and press. Lay collar between jacket and facing. Stitch undercollar to neck edge of jacket and stitch top collar to facing. Press seam allowances open. Turn facing to inside. Pin collar joining seams together. Lay facing in back up again and stitch seam allowances together, close to collar joining seam.

Step 8 — Hem

Unfold facings at hem. Press hem allowance to inside but do not yet sew. Turn facings to inside again.

Step 9 — Pleat

Stitch ease pleat in back lining piece, at top and bottom, each about 5 cm (2 ins) long, and baste in between. Press pleat to one side. Stitch seams of lining.

Step 10 — Line jacket, hem

Stitch allowances of centre seam on centre back lining piece together, 1 cm (3/8 in) from edge. For the ease pleat, stitch along centre back, about 5 cm (2 ins) long, each at top and bottom, and baste in between. Press pleat to one side. Stitch seams of lining. Set sleeves into lining. Stitch lining to inside edges of facing, laying hem allowance down. Lay lining inside jacket, with wrong sides facing, pulling linings into sleeves. Lay hem allowance to inside again and sew in place by hand. Turn in lining along lower edge of jacket, press fold lightly, push upward in a shallow curve, and pin to hem allowance. Sew facings and lining in place. Lay extra length of lining down and press lightly. Pin a fold, about 1 cm (3/8 in) deep, in lining, above sleeve hems. Turn in sleeve linings and sew to hem allowances. Lay extra length of sleeve linings down and press.

Step 11 — Tie belt

Fold tie belt lengthwise, right side facing in. Stitch lengthwise edges together, leaving about 5 cm (2 ins) open in centre of seam for turning. Press seam allowances open. Centre seam on belt and stitch across ends. Turn belt right side out. Sew seam opening closed.

Step 12 — Loops

Work thread loops, about 6 cm (23/8 ins) long, over side seams, at waist level. For each loop, stretch 4 threads then cover them closely with buttonhole, stitching by hand.

Step 13 — Snaps

Cover top halves of snaps with lining. Sew top halves of snaps in place, on front facing, as marked. Take even, regular stitches and exit needle on right side of fabric. Sew bottom halves of snaps to left front to match.

BurdaStyle

08/2010 Three quarter sleeve Coat