

07/2010 Skirt with pockets

By: burda style magazine

<http://www.burdastyle.com/projects/072010-skirt-with-pockets>

Skirt with pockets burda style magazine patterns FAQ

Materials

crosswise stretch cotton satin

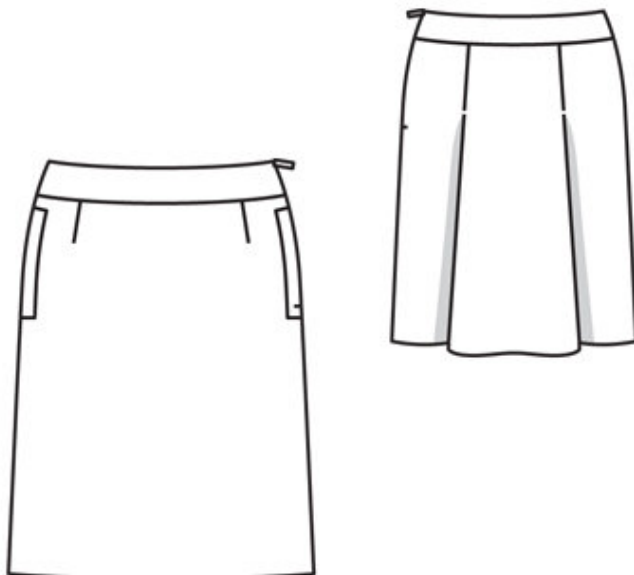
Step 1 — Preparation

Trace the pattern pieces from the pattern sheet.

Seam and hem allowances:

Seams and edges 1.5 cm (5/8 in), hem 4 cm (1 5/8 ins).

Step 2 — Cutting out



21 front skirt panel, on a fold 1x
22 back skirt panel, on a fold 1x
23 front waistband, on a fold 2x
24 back waistband, on a fold 2x
25 pocket piece 4x
(twice just to lining line)
a) 2 bias welt strips, 18 cm (7 ins) long, 6 cm (23/8 ins) wide (incl. allowance).
Interfacing: See pattern layout. Interface outer waistband pieces.

Step 3 — Back pleats

Stitch front darts and press toward centre front. Work from inside to stitch pleats in back skirt panel from upper edge to arrow mark. Lay pleats in arrow direction and baste to upper edge.

Step 4 — In-seam pockets with welts

To mark an abutting line for welts on right side of fabric, baste a line, 1.5 cm (5/8 in) to each side of welt joining line. Fold welt strips in half lengthwise and press, right side facing out. Lay doubled welt strips on skirt panel and pin so that fold edges of welts meet abutting lines. Stitch welts to joining edges, 1.5 cm (5/8 in) from fold edge, from corner to corner. Clip diagonally into seam allowance of skirt panel at ends of stitching. Lay welts into pocket openings and press. Press seam allowances onto skirt panel. Stitch ends of welts right sides together with skirt panel, from corner to marked side seam line. Stitch smaller pocket pieces to seam allowances of welt joining seams, between markings, and press forward. Topstitch skirt panel close to welt joining seams. Lay larger pocket pieces under pocket opening edges and pin — allowances on side edges of pocket pieces extend at fold edges of welts. Stitch edges of pocket pieces together. Baste side and upper edges of pocket pieces in place

Step 5 — Right side seam

Stitch right side seam. Press seam allowances open.

Step 6 — Waistband

Stitch right side seam on outer waistband unit and stitch side seam on inside waistband unit as mirror image. Stitch outer waistband to upper edge of skirt. Press seam allowances of joining seam onto waistband.

Step 7 — Zip

Sew invisible zip to left opening edges of skirt and outer waistband. Stitch left side seam from lower edge to zip.

Step 8 — Inner waistband

Lay inner waistband right sides together with outer waistband. Turn inner waistband back at zip opening, about 5 mm (3/16 in) before edge, and pin to upper edge. Lay allowances on opening edges of skirt outward and pin to upper edge, over inner waistband. Stitch along upper edge of waistband. Lay inner waistband to inside, pin over joining seam without turning in, and sew to zip. Topstitch waistband close to joining seam and upper edge.

Step 9 — Hem allowance

Press hem allowance to inside and sew in place by hand.

BurdaStyle

07/2010 Skirt with pockets