

6/2010 Jacket with patch pockets

By: burda style magazine

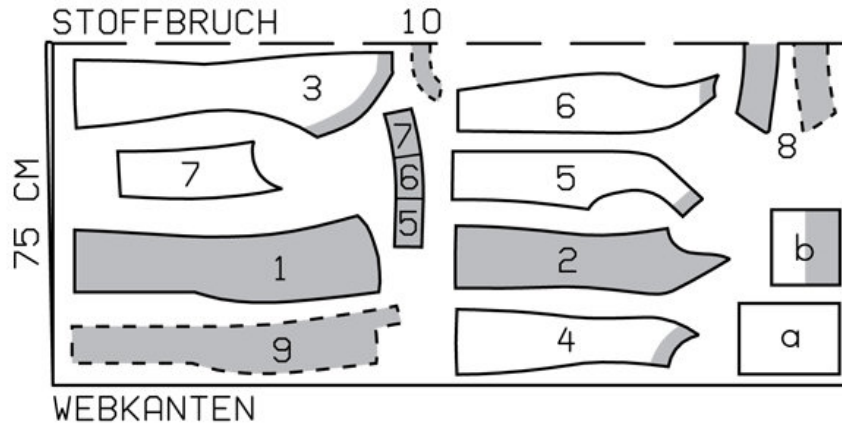
<http://www.burdastyle.com/projects/62010-jacket-with-patch-pockets>

Jacket with patch pockets burda style magazine patterns FAQ

Materials

Linen

Step 1 — Preparation



113 34-44

Trace the pattern pieces from the pattern sheet. Trace the sleeve facings from pieces 5, 6 and 7 as separate pattern pieces. Glue sleeve facings together (see pattern layout).

Seam and hem allowances:

Seams and edges 1.5 cm (5/8 in), hem 4 cm (15/8 ins), lining 1.5 cm (5/8 in).

Step 2 — Cutting Out



Linen:

1 centre front 2x

2 side front 2x

3 centre back 2x

4 side back 2x

5 front sleeve piece 2x

6 back sleeve piece 2x

7 underneath sleeve piece 2x

5 + 6 + 7 sleeve facing 2x

8 collar, on a fold 2x

9 front facing 2x

10 back facing, on a fold 1x

a) 2 pockets, 22 cm (8 3/4 ins) long incl. 4 cm (1 5/8 ins) self-facing at upper edge, 15.5 cm (6 1/4 ins) wide,

b) 2 flaps, 16.5 cm (6 1/2 ins) long, 15 cm (6 ins) wide, finished width 7.5 cm (3 ins).

Lining: piece 1 to lining line; piece 3 to lining line and at centre back with an ease pleat of about 2 cm (3/4 in); pieces 5 and 6 at upper edge to lining line and at bottom minus width of facing; piece 7 minus width of facing; and also pieces 2 and 4.

Interfacing: See pattern layout. Also interface hem allowances.

Step 3 — Stitch centre back seam, front and back section seams, and side seams.

Stitch centre back seam, front and back section seams, and side seams. Press seam allowances open.

Step 4 — Front edges and lapels

Lay facings right sides together with fronts. Pin to lapel fold lines. Roll lapels and pin outer edges together. Stitch along front edges and edges of lapels to upper corner, leaving upper narrow edge open. Trim seam allowances. Turn facings to inside. Baste upper narrow edges together. Clip seam allowance into corner of facing. Fold lapels outward on fold line and at marking and lay inside edge of facings forward. Baste upper ends of lapels to fronts.

Step 5 — Sleeve seams

Stitch top sleeve seams (seam number 8). Stitch back sleeve pieces to underneath sleeve pieces (seam number 5). Press seams open. Stitch sleeve facings right sides together with lower edge of sleeves. Stitch front seams on sleeves and facings. Turn facings to inside and sew in place.

Step 6 — Sleeves

Stitch sleeves to back (seam number 6) and go on to stitch to fronts, as far as corner of neck edge. Press seam allowances in front onto sleeves, as far as section seam. Press seam allowances in back open, as far as section seam.

Step 7 — Collar

Stitch collar pieces right sides together along outer edges, from seam number 9. Begin and end stitching on narrow edges, exactly at seam line of joining edge. Trim seam allowances. Turn collar right side out and press.

Step 8 — Stitching collar to jacket

Lay inside edges of front facings right sides together with fronts again and stitch back facing to upper narrow edges. Leave facings lying right sides together with jacket for now. Stitch undercollar to neckedge of jacket and stitch top collar to facing. Press seam allowances of collar joining seams open. Turn facing to inside. Pin collar joining seams together. Lay back facing up again and stitch seam allowances together, close to collar joining seam. Lay facing down.

Step 9 — Patch pockets and flaps

Lay self-facing on upper edge of each pocket to inside and stitch 2 cm (3/4 in) from fold edge. Press remaining pocket allowances to inside. Edgestitch pockets to fronts, at placement lines, not catching facings. Stitch small triangles at top corners of pockets. Fold flaps lengthwise, right side facing in. Stitch across ends. Turn right side out. Topstitch close to edges. Work a buttonhole, centred, in each flap, 2 cm (3/4 in) from lower edge. Stitch flaps in place, 1 cm (3/8 in) above pockets. Press flaps down and stitch again next to joining seams.

Step 10 — Hem Allowances

Unfold facings at hem. Press hem allowance to inside but do not yet sew. Lay facings to inside again.

Step 11 — Shoulder Pads

Sew shoulder pads in place.

Step 12 — Pleat

Stitch allowances of centre seam on back lining together, 1 cm (3/8 in) from fabric edge. For ease pleat, stitch along centre back, from the top down and bottom up, each about 5 cm (2 ins) long, and baste in between. Press pleat to one side. Stitch seams of lining. Set in sleeve linings.

Step 13 — Line coat, hem

Stitch ease pleat in back lining pleat at top and bottom, about 5 cm (2 ins) long, and baste in between. Press pleat to one side. Stitch darts and seams of lining. Set in sleeve linings. Stitch lining to inside edges of facing, laying hem allowance of facings down. Lay lining inside coat, with wrong sides together, pulling linings into sleeves. Lay hem allowance to inside and sew in place by hand. Turn in lining along lower edge of coat and press fold edge lightly. Push upward in a shallow curve and pin to hem allowance. Sew facings and lining in place. Lay extra length of lining down and press lightly. Turn in edge of sleeve lining and sew to facing.

Step 14 — Buttonholes

Work buttonholes in right front.

BurdaStyle

6/2010 Jacket with patch pockets