

6/2010 Jersey top with 3/4 sleeves

By: burda style magazine

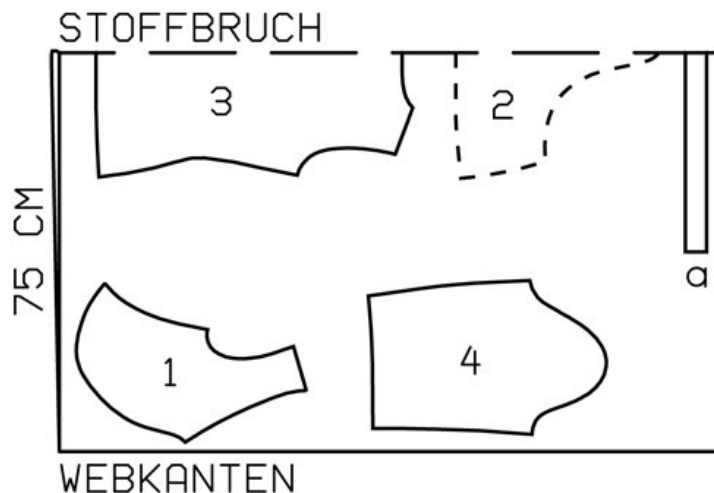
<http://www.burdastyle.com/projects/62010-jersey-top-with-34-sleeve>

Jersey top with 3/4 sleeves burda style magazine patterns FAQ

Materials

Lurex Jersey

Step 1 — Preparation



108 36-44

Trace the pattern pieces from the pattern sheet.

Seam and hem allowances:

Seams and edges 1.5 cm (5/8 in), hem 5 cm (2 ins), sleeve hems 6 cm (2 3/8 ins). Flare sleeve hem allowances.

Step 2 — Cutting Out



1 upper front 2x

2 lower front, on a fold 1x

3 back, on a fold 1x

4 sleeve 2x

a) facing strip for neck edge, 73 â— 75â— 76 â— 78 â— 80 cm (28 3/4 â— 29 3/4 â— 30 â— 30 3/4 â— 31 1/2 ins) long, 4 cm (1 5/8 ins) wide (incl. allowance).

Vilene Bias Tape: Iron onto shoulder seam edges of fronts and onto neck edge. Also iron Vilene Bias Tape on to section seam edges of lower front.

Step 3 — Shoulder seams

Stitch shoulder seams. Trim seam allowances to 7 mm (1/4 in), neaten together and press onto back.

Step 4 — Neck edge

Fold facing strip for neck edge lengthwise, right side facing out, and press. Pin doubled facing strip to neck edge so that fold edge of strip lies on garment piece, 1 cm (3/8 in) past seam line. Stitch along neck edge. Trim seam allowances. Turn facing strip to inside. Topstitch 7 mm (1/4 in) from neck edge.

Step 5 — Upper and Lower Fronts

Fold allowance at top point of lower front down and press. Gather lower edges of upper front pieces. Stitch upper fronts to lower front — neck edges meet at centre front. Press seam allowances onto lower front.

Step 6 — Stitch side seams and sleeve seams.

Stitch side seams and sleeve seams.

Step 7 — Sleeve Caps

Set in sleeves, easing sleeve caps.

Step 8 — Hems

Lay hem allowances to inside. Stitch hems from right side of fabric with the twin machine needle — 4 cm (1 5/8 ins) from lower edge of shirt and 5 cm (2 ins) from lower edges of sleeves.

BurdaStyle

6/2010 Jersey top with 3/4 sleeves