

6/2010 Long dress with bat sleeves

By: burda style magazine

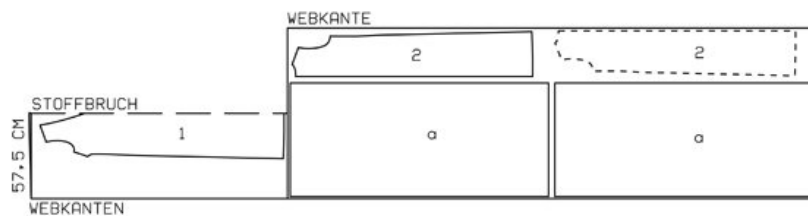
<http://www.burdastyle.com/projects/62010-long-dress-with-bat-sleeve>

Long dress with bat sleeves burda style magazine patterns FAQ

Materials

Chiffon and silk satin for lining

Step 1 — Preparation



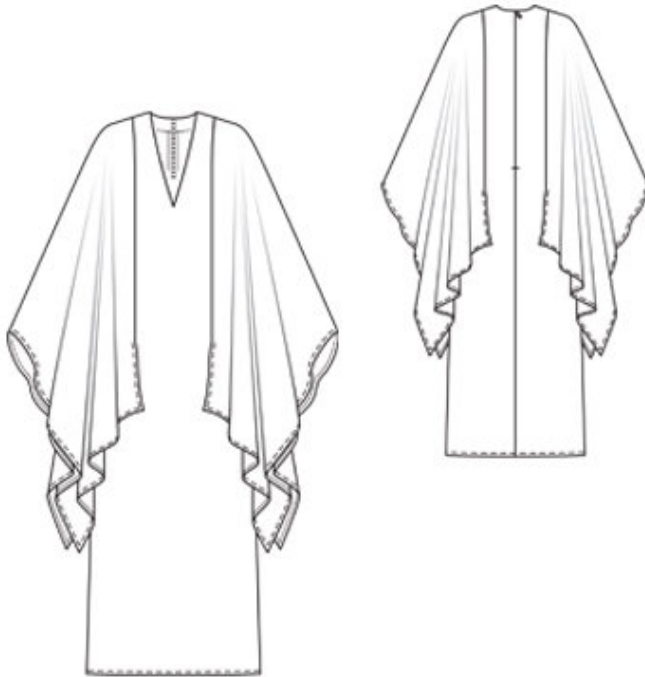
111 72-88

Trace the pattern pieces from the pattern sheet. Lengthen pieces 1 and 2 as indicated.

Seam and hem allowances:

Seams, edges and hem 1.5 cm (5/8 in).

Step 2 — Cutting Out



Chiffon:

1 front, on a fold 1x

2 back 2x

a) 2 sleeves, 167 â— 168.5 â— 170 â— 172 â— 173 cm (65 3/4 â— 66 3/8 â— 67 â— 67 3/4
 â— 68 1/4 ins) wide, 74 â— 75 â— 76 â— 76 â— 77 cm (29 1/4 â— 29 3/4 â— 30 â— 30 â—
 30 1/2 ins) long.

Silk satin (lining):

1 front, on a fold 1x

2 back 2x

4 front neck facing, on a fold 1x

5 back neck facing 2x

b) 2 bias strips for armholes, 47 â— 48 â— 49 â— 51 â— 52 cm (18 1/2 â— 19 â— 19 1/4 â— 20
 1/4 â— 20 1/2 ins) long, 4 cm (1 5/8 ins) wide (incl. allowance).

Interfacing: Iron onto facing pieces.

Step 3 — Bust Darts, Side Seams, Shoulder Seams

Stitch bust darts. Press darts down. Stitch side seams and shoulder seams. Trim seam allowances to 7 mm (1/4 in) wide, neaten together, and press onto back.

Step 4 — Lining

Stitch darts and seams on lining. Place lining inside dress with right side facing wrong side. Baste to back edges, above slit mark, and to neck and armhole edges. Also baste main fabric and lining together on each side of marked joining lines for sleeves, first pinning joining lines together exactly.

Step 5 — Bias strips

Fold bias strips in half lengthwise and press, right side facing out. Turn in one end of each strip. Pin doubled bias strips to armhole edges so that fold edge of each strip lies on garment piece, 7 mm (1/4 in) past seam line and open end lies over turned-in end. Stitch along edges of armholes. Trim seam allowances. Turn bias strips to inside. Press edges. Topstitch 5 mm (3/16 in) from armhole edges.

Step 6 — Sleeves

Measure and mark 20 cm (8 ins) from each end of joining edge of each sleeve (long edge). Neaten seam allowance between markings. Stitch sleeves right sides together with front and back, along joining lines, so that sleeves point toward centre and lower ends extend past joining line by 20 cm (8 ins). Press allowances on extending edges of sleeves and on remaining outer edges of sleeves to inside, turn in, and stitch. Lay sleeves over joining seams, to side, and press.

Step 7 — Zipper

Sew invisible zip to back opening edges. Clip seam allowances of chiffon at end of opening. Stitch centre back seams of main fabric and lining each separately, stitching from lower edge to zip opening.

Step 8 — Stitch shoulder seams of neck facing.

Stitch shoulder seams of neck facing. Pin facing right sides together with neck edge of dress. Turn facing at zip opening back, about 5 mm (3/16 in) before edge of opening, and pin to upper edge. Lay allowances of dress at edges of slit outward and pin to neck edge, over facing. Stitch along neck edge. Trim seam allowances and clip into point of neck edge. Turn allowances on edges of slit to inside. Lay facing up and stitch to seam allowances, as far as possible, close to seam. Turn facing to inside and sew to zip tapes and to shoulder seams.

Step 9 — Hem

Press hem allowance to inside, turn in and stitch. Hem lining so that it is 1 cm (3/8 in) shorter than dress.

BurdaStyle

6/2010 Long dress with bat sleeves