

# 6/2010 Short sleeve tuxedo jacket

By: burda style magazine

<http://www.burdastyle.com/projects/62010-short-sleeve-tuxedo-jacket>

---

Short sleeve tuxedo jacket a

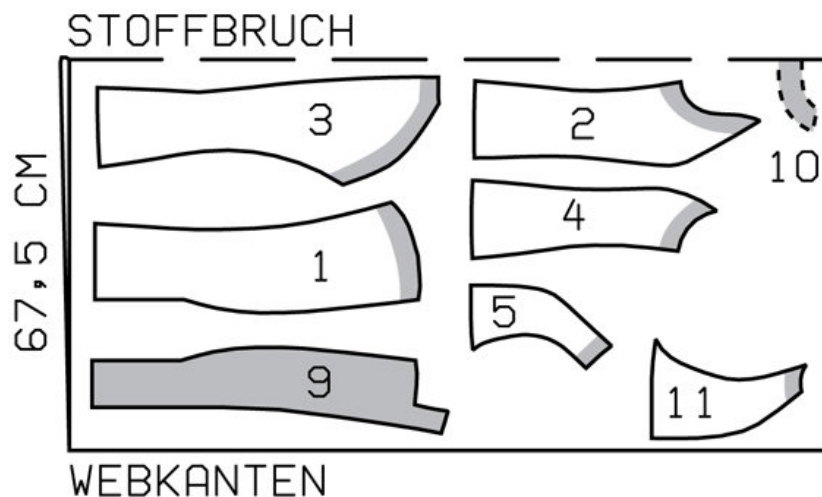
href="http://www.burdastyle.com/blog/burda-style-magazine-pattern-faq&#8221;&gt;burda style magazine patterns FAQ

## Materials

Rep fabric

---

## Step 1 — Preparation



114 34-44

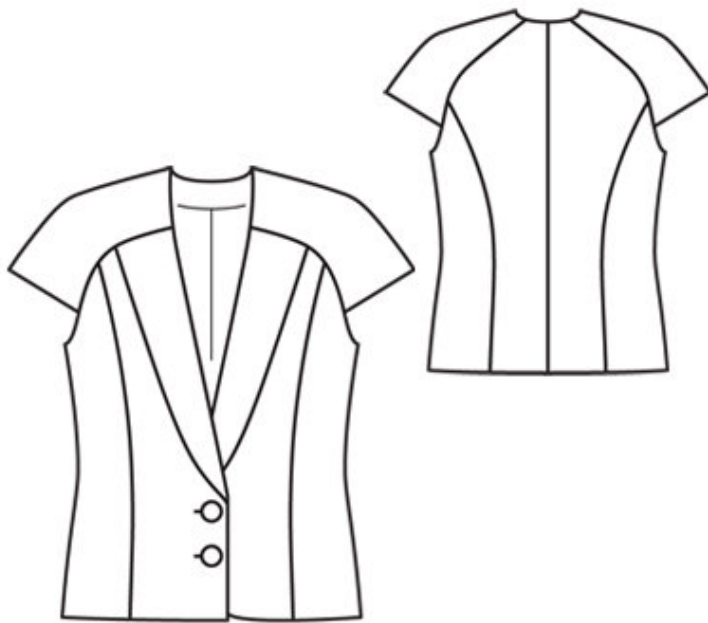
Trace the pattern pieces from the pattern sheet.

Seam and hem allowances:

Seams and edges 1.5 cm (5/8 in), hem and sleeve hems 4 cm (1 5/8 ins), lining 1.5 cm (5/8 in).

---

## Step 2 — Cutting Out



Rep fabric:

1 centre front 2x

2 side front 2x

3 centre back 2x

4 side back 2x

5 front sleeve 2x

9 front facing 2x

10 back facing, on a fold 1x

11 back sleeve 2x

Lining: pieces 1, 5 and 11 to lining line; piece 3 to lining line and at centre back with an ease pleat of about 2 cm (3/4 in); and also pieces 2 and 4.

Interfacing: See pattern layout. Also interface hem allowances.

---

### **Step 3 — Stitch centre back seam, front and back section seams, and side seams**

Stitch centre back seam, front and back section seams, and side seams. Press seam allowances open.

---

### **Step 4 — Front edges and lapels:**

Lay facings right sides together with fronts. Pin to lapel fold lines. Roll lapels and pin outer edges together. Stitch along front edges and edges of lapels to upper corner, leaving upper narrow edge open. Trim seam allowances. Turn facings to inside. Baste upper narrow edges together. Clip seam allowance into corner of

facing. Fold lapels outward on fold line and at marking and lay inside edge of facings forward. Baste upper ends of lapels to fronts.

---

## **Step 5 — Collar pieces**

Stitch collar pieces right sides together along outer edges, from seam number 9. Begin and end stitching on narrow edges, exactly at seam line of joining edge. Trim seam allowances. Turn collar right side out and press.

---

## **Step 6 — Sleeves**

Stitch top sleeve seams. Press seam allowances open. Press sleeve hem allowances to inside and sew in place by hand. Trim hem allowances on sleeve joining edges accordingly. Stitch sleeves to front and back pieces, matching seam numbers 6, 7 and 11. Press seam allowances onto sleeves.

---

## **Step 7 — Facings**

Lay inside edges of front facings right sides together with fronts again and stitch back facing to upper narrow edges. Stitch facing right sides together with neck edge. Trim seam allowances. Turn facing to inside and press edge.

---

## **Step 8 — Hem Allowances**

Unfold facings at hem. Press hem allowance to inside but do not yet sew in place. Lay facings to inside again.

---

## **Step 9 — Lining and Pleats**

Stitch allowances of centre seam on back lining together, 1 cm (3/8 in) from fabric edge. For ease pleat, stitch along centre back, from the top down and bottom up, each about 5 cm (2 ins) long, and baste in between. Press pleat to one side. Stitch seams of lining. Press lower edge of sleeves to inside, 2 cm (3/4 in) above marked hem line and trim to a width of 1.5 cm (5/8 in). Stitch sleeve linings to edges of armholes.

---

## **Step 10 — Armholes and lining**

Stitch lining to inside edges of facing, laying hem allowance of facings down. Lay lining inside jacket with wrong sides facing. Turn in armhole edges of main fabric and lining toward each other at one side seam and pin together with a single straight pin. Now pull each armhole out, one after the other, and stitch together. Trim seam allowances and clip at ends of seams. Turn lining to inside and press edges of armholes. Lay hem allowance to inside and sew in place by hand. Turn in lining along lower edge of jacket and press fold lightly. Push upward in a shallow curve and pin to hem allowance. Sew facings and lining in place. Lay extra length of lining down and press lightly. Sew edges of sleeve linings to hem.

---

**BurdaStyle**

6/2010 Short sleeve tuxedo jacket