

10/2011 Long Hippie Coat

By: burda style magazine

<http://www.burdastyle.com/projects/102011-long-hippie-coat>



Long Hippie Coat burda style magazine patterns FAQ

Materials

Faux fur

Step 1 — Preparation



Paper cut for ANSI A (German DIN A4) prints:

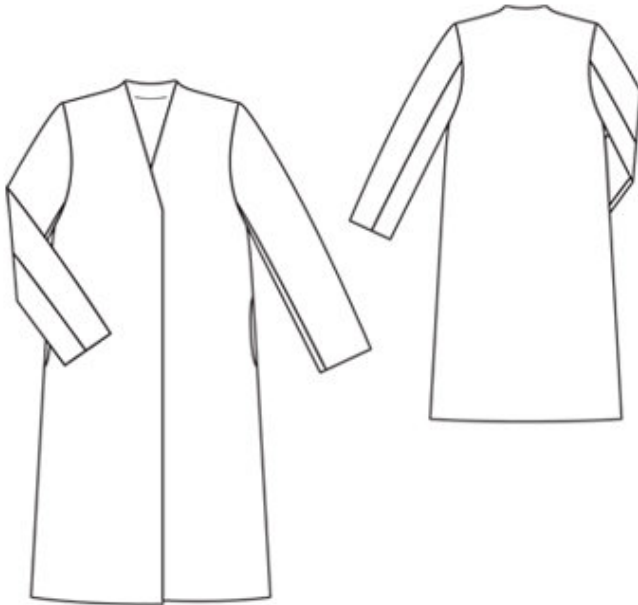
This pattern is printed on 8.5 × 11 sheets of plain paper. Do not scale or center pages before printing. Wait until all sheets are printed out before beginning to tape them together. **Do not cut out pattern pieces yet**— Arrange the sheets on a large, hard, flat surface so that they fit together, matching up like numbers and letters (i.e. 6A to 6A). To tape pattern together, fold under the margin of one piece (6A) and tape right against the line of it's matching number/letter (6A).

burda style magazine pattern do not have seam allowance included.

Seam and hem allowances to be added: Seams and edges 1.5 cm (5/8 in).

see example here: <http://www.burdastyle.com/projects/072011-jumpsuit/instructions/1>

Step 2 — Cutting out



Fake fur:

1 front 2x

2 back, on a fold 1x

3 upper sleeve 2x

4 under sleeve 2x

5 back facing, on a fold 1x

Jersey (lining): pieces 1 and 2 minus width of facing; pieces 3, 4, and 5; and pocket piece (piece 1) 4x.

Vilene Bias Tape/stay tape: Iron to neck edge of back lining facing.

Step 3 — Note

Press fake fur lightly with low heat. Glide the iron over the fabric with no pressure to prevent pressing hairs of the fur flat. Test-iron a scrap of the fabric first. You can also just smooth the allowances open with your hand and baste them in place with large stitches, if necessary. During storage, lay the finished coat of cut-out fake fur flat.

Step 4 — Neck

Baste lining to wrong side of back neck facing and treat as one layer of fabric from now on. Stitch back neck facing right sides together with back neck edge, begin and ending exactly at marked shoulder seam line. Trim seam allowances and press open.

Step 5 — Bias tape

Baste bias tape to wrong side of front shoulder seam edges, from facing fold line. Stitch shoulder seams, stitching back facing to front self-facings. In front, at corner between neck facing and front facing, lay dart closed like a pleat and baste to inside facing edge. Turn facings to inside.

Step 6 — Side seams

Stitch side seams, but do not stitch across pocket opening.

Step 7 — Inseam pockets

Pin pocket pieces right sides together with seam allowances of pocket opening edges. Stitch pocket pieces in place, close to side seam and along seam line at pocket opening edges. Press pocket pieces forward and stitch together.

Step 8 — Sleeve

Stitch sleeve seams. Press sleeve hem allowances to inside and sew in place by hand.

Step 9 — Sleeve caps

Set in sleeves, easing sleeve caps.

Step 10 — Facings

Unfold facings at hem. Press hem allowance to inside but do not yet sew. Turn facings to inside again.

Step 11 — Lining

Stitch lining seams. Set in sleeve linings.

Step 12 — Line jacket, hem

Stitch lining to inside facing edges, turning hem allowance down. Lay lining inside jacket with wrong sides together, pulling linings into sleeves. Turn hem allowance to inside and sew in place by hand. Turn in lining along lower edge of jacket. Press fold edge lightly, push upward in a shallow curve, and pin to hem allowance. Sew facings and lining in place. Lay extra length of lining down and press lightly. Turn in edges of sleeve linings and sew to hem allowances. Turn extra length down and press.

BurdaStyle

10/2011 Long Hippie Coat