

6/2010 Dress with ruffled back

By: burda style magazine

<http://www.burdastyle.com/projects/62010-dress-with-ruffled-back>

Dress with ruffled back burda style magazine patterns FAQ

Materials

Crpe satin

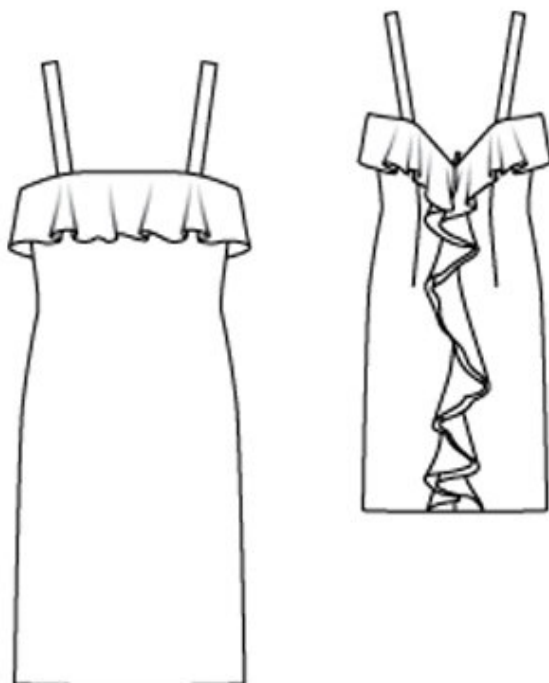
Step 1 — Preparation

Trace the pattern pieces from the pattern sheet.

Seam and hem allowances:

Seams and edges 1.5 cm (5/8 in), curved edges of flounce 1 cm (3/8 in), narrow bottom edge of back flounce 4 cm (1 5/8 ins), hem 4 cm (1 5/8 ins). Cut lining pieces with 1.5 cm (5/8 in) seam and hem allowances.

Step 2 — Cutting Out



Crpe satin:

21 front, on a fold 1x

22 back 2x

23 front flounce, on a fold 1x

24 back flounce 2x

a) 2 straps, 35 — 36 — 38 — 39 — 40 cm (13 3/4 — 14 1/4 — 15 — 15 1/2 — 15 3/4 ins) long, 4 cm (1 1/2 ins) wide, finished width 2 cm (3/4 in).

Lining: pieces 21 and 22.

Vilene Bias Tape: Iron onto upper edges of lining pieces.

Step 3 — Stitch darts

Stitch darts. Press bust darts down. Press back darts toward centre.

Step 4 — Stitch side seams

Stitch side seams. Press seam allowances open.

Step 5 — Flounce

Stitch side seams of flounce. Trim seam allowances to 7 mm (1/4 in), neaten together, and press to one side. Press allowance on outer edge of flounce to inside, turn half in, and stitch. Baste flounce to edges of centre back seam and to upper edge of dress, with wrong side facing right side.

Step 6 — Zipper

Sew invisible zip to back opening edges. Stitch centre back seam from lower edge to zip.

Step 7 — Straps

Fold straps lengthwise, right side facing in. Stitch long edges and across one end of each. Turn straps right side out and press. Baste straps to upper back edge, between markings.

Step 8 — Stitch darts and seams of lining, sew straps

Stitch darts and seams of lining. Leave zip slit open 2 cm (3/4 in) longer than marked. Pin lining right sides together with upper edge of dress. Turn lining at zip slit back, about 5 mm (3/16 in) before edge of slit, and pin to upper edge. Lay allowances of dress at edges of slit out ward and pin to upper edge, over lining. Stitch along upper edge. Trim seam allowances. Turn allowances at edges of slit and lining to inside. Pin front ends of straps under upper front edge as marked. Try on garment to determine correct strap length. Sew straps in place. Topstitch 7 mm (1/4 in) from upper edge of dress, not catching flounce.

BurdaStyle

6/2010 Dress with ruffled back