

6/2010 Cocktail dress with asymmetrical collar

By: burda style magazine

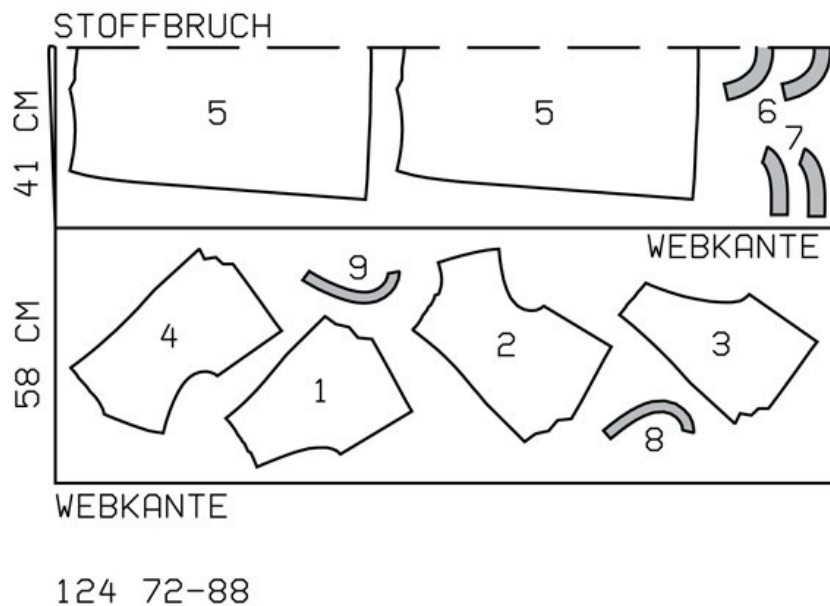
<http://www.burdastyle.com/projects/62010-cocktail-dress-with-asyr>

Cocktail dress with asymmetrical collar burda style magazine patterns FAQ

Materials

Crpe satin

Step 1 — Preparation

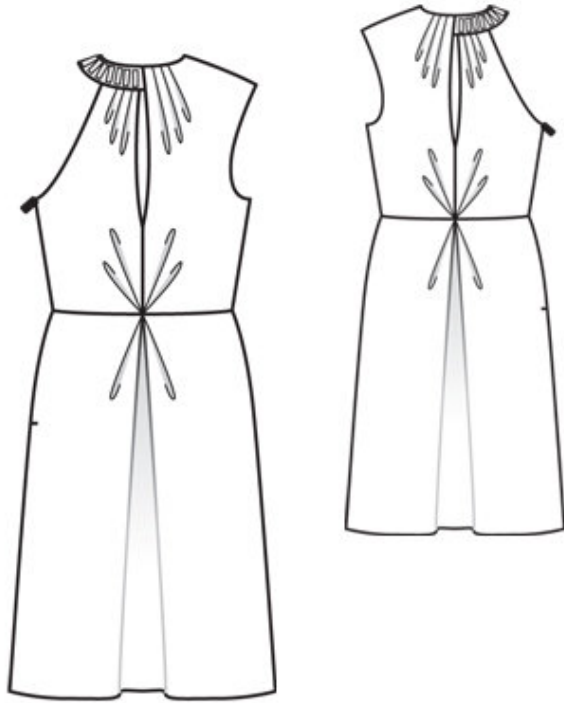


Trace the pattern pieces from the pattern sheet. The pleat arrows for the upper pleats on pieces 1, 2, 3, and 4 are marked for size 72. Remark the pleat arrows for the other sizes accordingly.

Seam and hem allowances:

Seams and edges 1.5 cm (5/8 in), slit edges of front and back 3 cm (1 1/4 ins), hem 4 cm (1 5/8 ins).

Step 2 — Cutting Out



- 1 right front 1x
 - 2 left front 1x
 - 3 right back 1x
 - 4 left back 1x
 - 5 skirt panel, on a fold 2x
 - 6 front neck band, on a fold 2x
 - 7 back neck band 4x
 - 8 left front armhole facing 1x
 - 9 left back armhole facing 1x
- Interfacing: See pattern layout.

Step 3 — Stitch centre seam on front and back below slit mark.

Stitch centre seam on front and back below slit mark. Press seam allowances open and press allowances on slit edges to inside. Fold pleats in arrow direction and baste.

Step 4 — Left side seam, shoulder seam and armhole

Stitch left side seam and left shoulder seam. Stitch side seam and shoulder seam of left armhole facing. Stitch left armhole facing right sides together with edge of left armhole. Trim seam allowances. Lay facing over seam allowances into armhole and stitch to seam allowances, close to seam. Turn facing to inside. Sew inside edge of facing in place. Press allowance on edge of right armhole to inside and sew in place by hand.

Step 5 — Neck bands

Stitch shoulder seams of neck bands. Baste neck edge of left front and back to upper edge of outer neck band unit, with wrong side facing right side and matching pressed slit edges to centre front and back of band. Lay inside neck band unit right sides together with outer band and stitch upper edges together, catching left front and back. (Right front and back will be caught in seam on lower edge of band later.) Stitch edges at left back end of band together, stitching as far as possible at the bottom without catching back. Fold seam allowances on lower edges of right end of band up and stitch right end along centre back. Then stitch lower edge of right half of band together between markings (seam number 6 and 5). Trim seam allowances. Turn band right side out, pulling right end of band out at centre front. Press seamed edges and press allowances on open edges of band to inside. Slip upper edge of right front between edges of band, from centre front to marking (seam number 5), and slip upper edge of right back between edges of band, from centre back to marking (seam number 6). Baste these edges of the band together. Baste remaining open edges of band together. Topstitch band close to all edges, not catching left front and back. Sew band to inside of left shoulder seam.

Step 6 — Stitching skirt to bodice

Stitch left side seam of skirt. Fold pleats in arrow direction and baste. Stitch skirt to bodice. Press seam allowances up.

Step 7 — Zipper

Sew invisible zip to right side slit edges. Begin at edge of armhole and leave ends of zip tape extending at the top. Stitch right side seam below zip. Turn in top ends of zip tapes and sew in place.

Step 8 — Hem

Press hem allowance to inside and sew in place by hand.

BurdaStyle

6/2010 Cocktail dress with asymmetrical collar