

4/2010 Caftan-like dress and scarf

By: burda style magazine

<http://www.burdastyle.com/projects/42010-caftan-like-dress-and-scarf>

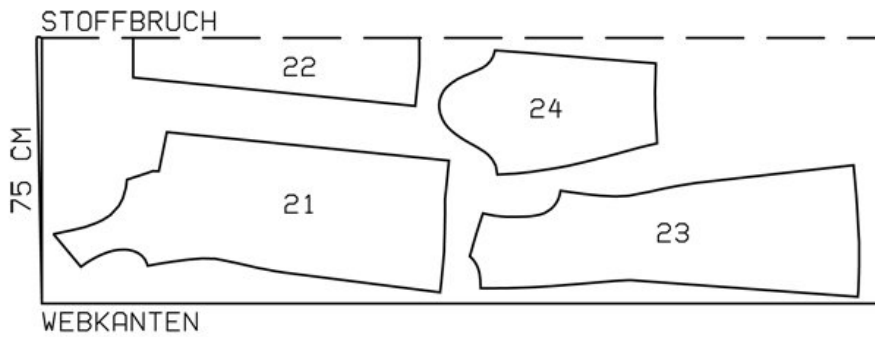


Caftan-like dress and scarf burda style magazine patterns FAQ

Materials

Stretch jersey and silk chiffon

Step 1 — Preparation



145 44, 46
JERSEY

Trace the pattern pieces from the pattern sheet. Glue pieces 21 and 21a together on the joining lines. Lengthen piece 23 as indicated.

Seam and hem allowances:

Seams and edges 1.5 cm (5/8 in), hem 4 cm (15/8 ins), sleeve hems 5 cm (2 ins). Flare sleeve hem allowances.

Step 2 — Cutting Out



Dress
21front 2x

22pleat underlay, on a fold 1x

23back 2x

24sleeve 2x

Vilene Bias Tape: Iron onto front shoulder edges, edges of back zip opening and neck edges.

Scarf

Scarf piece, 230 cm (90 1/2 ins) long, 110 cm (43 1/2 ins) wide.

Step 3 — Bust Darts

Stitch bust darts, beginning exactly on marked centre front and fold line. Press darts up.

Step 4 — Zipper

Sew invisible zip to back edges. Stitch centre back seam from lower edge to zip.

Step 5 — Shoulder seams

Stitch shoulder seams. Press seam allowances open.

Step 6 — Neck edge

Press allowance at neck edge to inside and stitch from right side with the twin machine needle.

Step 7 — Centre front seam and pleats

Stitch centre front seam from neck edge to dart seam. Press seam allowances open. Lay pleat folds to inside on fold line and baste — do not press pleat folds. Lay pleat underlay piece on wrong side of dress front, over pleat, and stitch lengthwise edges together, ending about 6 cm (23/8 ins) above hem line. Stitch from right side along lines of darts, catching upper edges of pleat folds and pleat underlay.

Step 8 — Stitch side seams

Stitch side seams.

Step 9 — Sleeve seams

Stitch sleeve seams, easing back sleeve seam edge.

Step 10 — Sleeve caps

Set in sleeves, easing sleeve caps.

Step 11 — Hems

Lay hem allowances on dress and sleeves to inside. Stitch hems from right side with the twin machine needle — 3 cm (1 1/4 ins) from lower edge of dress and 4 cm (15/8 ins) from lower edges of sleeves. Stitch remaining inside pleat seams across finished hem. Turn bottom ends of seam allowances diagonally in and

sew together by hand.

BurdaStyle

4/2010 Caftan-like dress and scarf