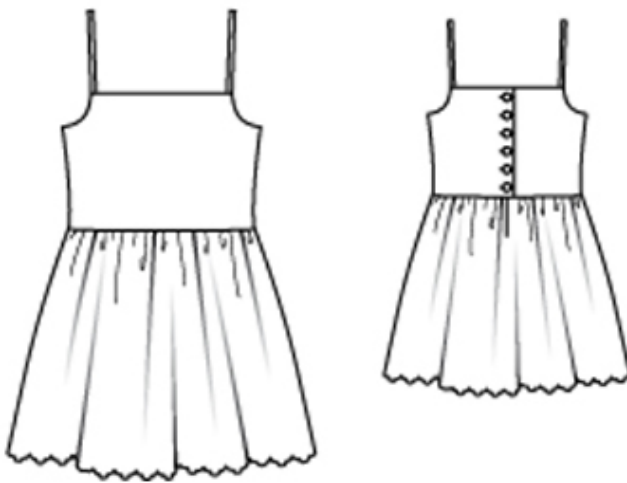


# 6/2010 Girl's Sleeveless Dress

By: burda style magazine

<http://www.burdastyle.com/projects/62010-girls-sleeveless-dress>

---



Girl's Sleeveless Dress burda style magazine patterns FAQ

## Materials

Eyelet/broderie anglaise with two scalloped edges and batiste for lining

---

## Step 1 — Preparation

Trace the pattern pieces from the pattern sheet.

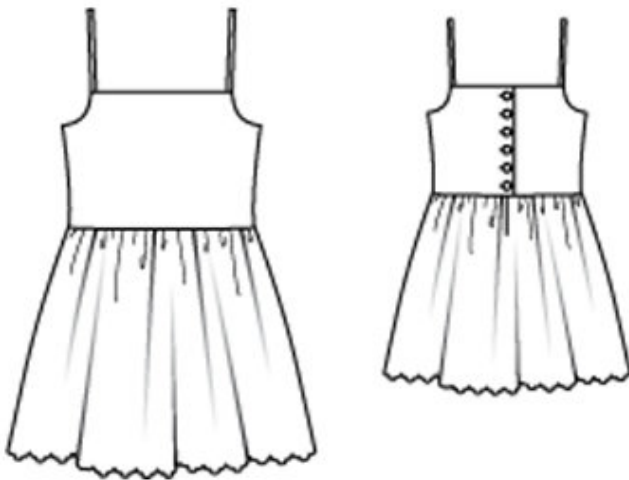
The buttonholes on piece 22 are marked for size 98. For sizes 104 â 122, mark top buttonhole the same distance from upper edge as for size 98. The bottom buttonhole is in the same place for all sizes. Space the other buttonholes evenly in between.

Seam and hem allowances:

Seams and edges 1.5 cm (5/8 in), no allowance on lower edge of skirt pieces. The scalloped edges of the fabric lie on the lower edges of the skirt pieces.

---

## Step 2 — Cutting Out



Eyelet/broderie anglaise:

21 front, on a fold 1x

22 back 2x

a) 2 straps, 22 cm (8 3/4 ins) long, 3 cm (1 1/4 ins) wide (incl. allowance),

b) 2 skirt panels, each 74 â 75 â 76 â 77 â 79 cm (29 1/4 â 29 3/4 â 30 1/2 â 31 1/4 ins) wide, 28 â 30 â 32 â 34 â 36 cm (11 1/8 â 12 â 12 3/4 â 13 1/2 â 14 1/4 ins) long,

c) back slit facing, 9 cm (3 1/2 ins) long, 3 cm (1 1/4 ins) wide (incl. allowance).

Plain batiste (lining): pieces 21 and 22,

d) 2 skirt panels, each 138 â 140 â 142 â 144 â 148 cm (54 1/2 â 55 1/4 â 56 â 56 3/4 â 58 1/4 ins) wide, 28 â 30 â 32 â 34 â 36 cm (11 1/8 â 12 â 12 3/4 â 13 1/2 â 14 1/4 ins) long.

Interfacing: See pattern layout.

---

## Step 3 — Stitch side seams on bodice and on bodice lining.

Stitch side seams on bodice and on bodice lining.

---

## Step 4 — Back slit

Use basting thread to mark a slit, 6 cm (2 3/8 ins) long, at centre of back skirt piece. Pin back slit facing right sides together with skirt, over slit marking. Work from wrong side to stitch closely around marking. Slash between lines of stitching. Turn facing to inside. Press edges of slit. Topstitch close to edges.

---

## Step 5 — Stitch side seams of skirt

Stitch side seams of skirt. Neaten seam allowances together and press to one side. Gather upper edge of skirt. Stitch skirt to bodice â matching slit edges with centre back. Press seam allowances up.

---

## Step 6 — Skirt lining

Stitch centre back seam on each skirt lining piece, leaving a slit, 8 cm (3 1/4 ins) long at the top. Press seams open. Press edges of slit to inside. Place skirt linings one over the other, with wrong side facing right side. Baste upper edges together and gather. Place skirt lining inside dress, with right side facing wrong side, and baste to skirt joining seam.

---

## Step 7 — Straps

Fold straps lengthwise, right side facing in. Stitch 7 mm (1/4 in) from fold edge. Turn straps right side out and press. Baste straps to top corners of front.

---

## Step 8 — Bodice

Press allowance on lower edge of bodice lining to inside. Lay bodice lining right sides together with bodice and stitch to back edges, upper edges and edges of armholes. Trim allowances. Turn lining to inside. Press edges. Baste lower edge of lining in place. Topstitch bodice close to all edges.

---

## Step 9 — Sewing straps in place

Pin back ends of straps under back edge. Try on garment to check strap length. Sew straps in place by hand.

---

**BurdaStyle**

6/2010 Girl's Sleeveless Dress