

# 07/2010 Waistcoat

By: burda style magazine

<http://www.burdastyle.com/projects/072010-waistcoat>

---

Waistcoat burda style magazine patterns FAQ

## Materials

gabardine with crosswise stretch

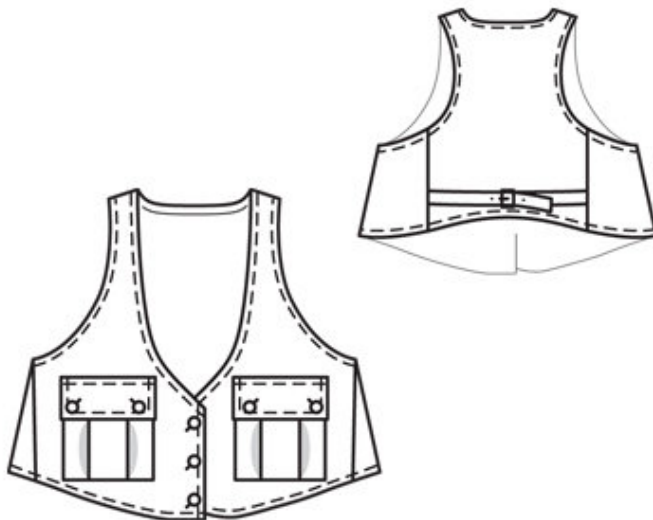
---

## Step 1 — Preparation

See the pattern overview above for all pattern details. Trace the pattern pieces from the pattern sheet. The buttonholes on piece 1 are marked for size 34. For sizes 36 to 42, mark new buttonholes. Mark the top buttonhole the same distance from neck edge as for size 34. The bottom buttonhole is the same for all sizes. Centre the third buttonhole in between.

---

## Step 2 — Cutting out



The pattern layout below shows you how to place the pattern pieces on the fabric. Make sure that the grain lines marked on the pattern pieces run parallel to the selvages of the fabric.

Gabardine:

1 front x2

2 side piece x2

3 back, on a fold x1

4 pocket x2

a) 2 pocket flaps, 15 cm (6 ins) long, 12 cm (4 3/4 ins) wide, finished width 6 cm (2 3/8 ins),

b) bias strip for neck edge, 80 cm (31 1/2 ins) long, 5 cm (2 ins) wide (incl. allowances),

c) 2 bias strips for armholes, sizes 34, 36, 38: 65 cm (25 3/4 ins) long, sizes 40, 42: 70 cm (27 3/4 ins) long, each 5 cm (2 ins) wide (incl. allowances),

d) right back half-belt for size 34: 14.5 cm (5 3/4 ins) long; sizes 36, 38: 16 cm (6 3/8 ins) long; sizes 40, 42: 17.5 cm (7 ins) long, each 5 cm (2 ins) wide, finished width 2.5 cm (1 in),

e) left back half-belt for size 34: 17.5 cm (7 ins) long; sizes 36, 38: 19 cm (7 1/2 ins) long; sizes 40, 42: 20.5 cm (8 1/4 ins) long, each 5 cm (2 ins) wide, finished width 2.5 cm (1 in).

Seam and hem allowances:

Use a ruler and tailor's chalk to mark allowances around the paper pattern pieces: 2 cm (3/4 in) for hem and 1.5 cm (5/8 in) at all other seams and edges. Cut out the fabric pieces on these lines.

Interfacing

See shaded area on pattern layout. Iron interfacing to wrong side of fabric.

Transfer pattern lines to the fabric:

Lay pieces with interfacing right sides together again and pin the paper pattern pieces back in place. Transfer pattern piece outlines (seam and hem lines) and all other lines and markings on the pattern pieces (except the grain line) to the wrong fabric side with a tracing wheel and Burda dressmaker's carbon paper (see detailed instructions included with the pack.) Hand baste along the centre front, pocket placement lines, and pleat lines to make these lines visible on the right of the fabric.

---

### Step 3 — Stitch seams

Place right sides of fabric together to baste and stitch. Secure start and end of seams by backstitching.

---

### Step 4 — Back half-belts

Fold fabric strips in half lengthwise, right side facing in. Stitch along long edges and across one end of each. Trim seam allowances, trimming corners diagonally (1). Turn halfbelts right side out. Press edges and topstitch close to edges. Baste halfbelts to side edges of back piece, between markings — placing the longer half-belt on the left edge (2).

---

### Step 5 — Back section seams

Lay side pieces right sides together with back. Pin back section seams (seam number 3). Stitch, catching the half-belt pieces in the seams (3). Neaten seam allowances together and press onto back. Topstitch back close to seams, catching the halfbelts.

---

### Step 6 — Shoulder seams

Lay fronts right sides together with back. Pin shoulder seams. Stitch (4). Press seam allowances open and neaten edges.

---

## Step 7 — Armholes, neck edge, and front edges

Neaten front self-facings. Fold facings to right side of front, on fold line, and pin to neck edge (5). Fold bias strips in half lengthwise, wrong side facing in. Press, shaping the strips to fit neck and armhole edges, e.g. stretch the fold edges and ease the open edges (6). Pin doubled bias strips each right sides together with neck and armhole edges, so that fold edges lie on front and back, 1.5 cm (5/8 in) past seam lines, and open edges lie on the seam allowance. At neck edges, ends of bias strip will lie on the front facings, about 2 cm (3/4 in) long. Stitch bias strips to edges and to upper edges of facings. Trim seam allowances, trimming corners diagonally across front corners of neck edge. Clip curves (7). Turn bias strips and front facings to inside (8). Press edges.

---

## Step 8 — Side seams

Lay bias strips on armholes up again. Lay fronts right sides together with side pieces. Pin side seams and pin ends of bias strips together. Stitch (9). Neaten seam allowances together and press onto fronts. Topstitch fronts close to seams. Fold bias strips to inside again.

---

## Step 9 — Hem

Unfold facings again. Press hem allowance to inside, turn in to a width of 1.5 cm (5/8 in), and pin in place. Work from the outer side of the garment to topstitch close to the hem edge and again 1 cm (3/8 in) from the hem edge. Fold facings to inside again and sew to the hem edge. Topstitch close to front edges, neck edge, and armhole edges. Topstitch again 1 cm (3/8 in) from these edges.

---

## Step 10 — Pockets

Neaten all edges of pocket pieces. Work from outer side of each pocket to fold pleats in arrow direction and press. Baste pleats in place (10). Fold upper edge of pocket to inside on fold line and press. Topstitch 3 cm (1 1/4 ins) from upper edge of each pocket. Press allowances on side and lower edges to inside (11). Pin pockets to fronts, at placement lines, and edgestitch in place (see also illus. 13).

---

## Step 11 — Flaps

Fold each flap in half lengthwise, right side facing in. Stitch narrow edges closed. Trim seam allowances, trimming corners diagonally (12). Turn flaps right side out. Press edges and topstitch 7 mm (1/4 in) from edges. Work slanted buttonholes in corners of flaps — 1.5 cm (5/8 in) from corners. Pin flaps to fronts, 1 cm (3/8 in) above pockets. Stitch (13). Trim seam allowances to 5 mm (3/16 in) wide. Press flaps down and topstitch 5 mm (3/16 in) from joining seam.

---

## Step 12 — Buttonholes

Work buttonholes in right front. Sew buttons to left front and to pockets, to match buttonholes.

---

## Step 13 — Belt buckle

Cut a small hole for the buckle prong, centred, in right back half-belt piece, 3 cm (1 1/4 ins) from the end. Neaten edges of hole with buttonhole stitching. Fold end of half-belt over bar of buckle and stitch in place (14). Cut 3 small holes, centred, in left back half-belt piece, placing first hole 5 cm (2 ins) from end of

half-belt and spacing the others 2 cm (3/4 in) apart. Neaten edges of holes with buttonhole stitching.

---

**BurdaStyle**

07/2010 Waistcoat