

5/2010 Boys' shirt with Mandarin collar

By: burda style magazine

<http://www.burdastyle.com/projects/52010-boys-shirt-with-mandarin>

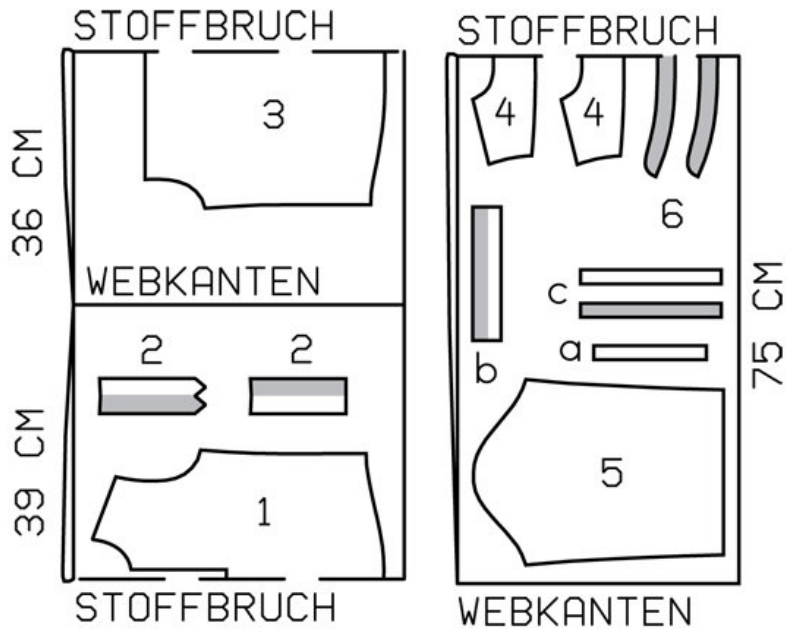


Boys' shirt with Mandarin collar burda style magazine patterns FAQ

Materials

Cotton poplin

Step 1 — Preparation



145 104-128

Trace the pattern pieces from the pattern sheet. Note different lines for right and left fastening edges on front band.

The buttonholes on piece 2 are marked for size 104. For sizes 110 - 128, mark the top buttonhole the same distance from upper edge as for size 104. The bottom buttonhole is the same for all sizes. Centre the remaining buttonhole in between.

Seam and hem allowances:

Seams and edges 1.5 cm (5/8 in), hem 2 cm (3/4 in).

Step 2 — Cutting Out



1 front, on a fold 1x

2 front band 2x

3 back, on a fold 1x

4 back yoke, on a fold 2x

5 sleeve 2x

6 standing collar, on a fold 2x

a) 2 binding strips for sleeve vents, 16 cm (6³/₈ ins) long, 2.5 cm (1 in) wide (incl. allowance),

b) 2 cuffs, 19 ½" 19.5 ½" 19.5 ½" 20 ½" 20 cm (7¹/₂ ¾" 7³/₄ ¾" 8 ¾" 8 ins) long, 4 cm (1¹/₂ ins) wide, finished width 2 cm (¾ in),

c) 4 tab pieces (sleeves), 20 ½" 22 ½" 24 ½" 26 ½" 27 cm (8 ¾" 8³/₄ ¾" 9¹/₂ -10¹/₄ -10³/₄ ins) long, 2 cm (¾ in) wide.

Interfacing: See pattern layout. Iron interfacing to wrong side of front, over bottom corners of placket-fastening.

Step 3 — Pleat

Fold pleat in back in arrow direction and baste.

Step 4 — Yokes

Pin outer back yoke right sides together with upper edge of back. Pin inside back yoke to upper edge of back, with right side facing wrong side. Stitch on yokes together. Press yokes up. Stitch outer yoke to upper edge of fronts (shoulder seams). Press seam allowances onto yoke. Turn in inside yoke and baste to joining seams.

Topstitch yoke close to joining seams.

Step 5 — Sleeve vents

Slash sleeve vents as marked. Spread cut edges open to a straight line and stitch to one lengthwise edge of binding strip as narrowly as possible. Press binding strip over joining seam into vent, then turn in to a width of 5 mm (3/16 in). and sew in place along joining seam. Mitre binding on inside, at top of vent. Lay binding on front edges of vents to inside and baste to lower edge.

Step 6 — Stitching sleeves to armhole edges

Stitch sleeves onto edges of armholes. Topstitch fronts, yoke and back 7 mm (1/2 in) from sleeve joining seams.

Step 7 — Side Seams and Sleeve Seams

Stitch side seams and sleeve seams as continuous seams.

Step 8 — Stitch cuffs

Gather lower edges of sleeves to fit cuffs. Stitch cuffs to lower edges of sleeves. Press seam allowances of joining seam and of other long edge of cuffs onto cuffs. Fold cuffs lengthwise, right side facing in, and stitch across ends. Turn right side out. Baste inside edges in place. Topstitch cuffs close to all edges. Topstitch close to outer edges of cuffs and again 7 mm (1/4 in) wide.

Step 9 — Hem

Lay hem allowance to inside, turn half in, press, and stitch.

Step 10 — Stitch front bands to fronts

Stitch front bands to fronts. Press seam allowances of band joining seams and of other long edges of bands onto bands. Fold bands lengthwise, right side facing in. Stitch across bottom ends of bands. Turn bands right side out. Baste inside edges in place. Topstitch bands close to edges.

Step 11 — Standing collar

Lay collar pieces right sides facing. Stitch together on front and upper edges. Begin and end stitching in front, exactly at seam line on joining edge. Trim seam allowances. Turn collar right side out and press. Stitch outer collar piece to neck edge. Press seam allowances onto collar. Turn in inside collar piece and baste to joining seam. Topstitch collar close to all edges.

Step 12 — Placket fastening:

Stitch front bands to vertical edges of front. Clip seam allowances of front diagonally at bottom corners. Press seam allowances of band joining seams and of other long edges of bands onto bands. Fold right band to inside on fold line and press. Baste inside edge to joining seam. Topstitch right band close to joining seam

and close to fold edge. Fold left band on fold line, right side facing in, and stitch pointed bottom end. Trim seam allowances. Turn left band right side out. Topstitch left band close to joining seam and close to fold edge. Work buttonholes in left band as marked. Stitch bottom end of right band to front. Stitch bottom end of left band to front.

BurdaStyle

5/2010 Boys' shirt with Mandarin collar