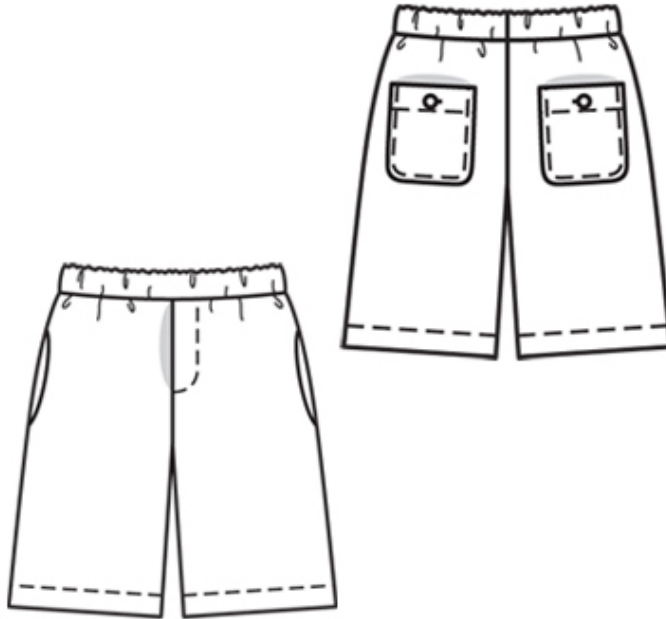


5/2010 Bermuda shorts for children

By: burda style magazine

<http://www.burdastyle.com/projects/52010-bermuda-shorts-for-chi>

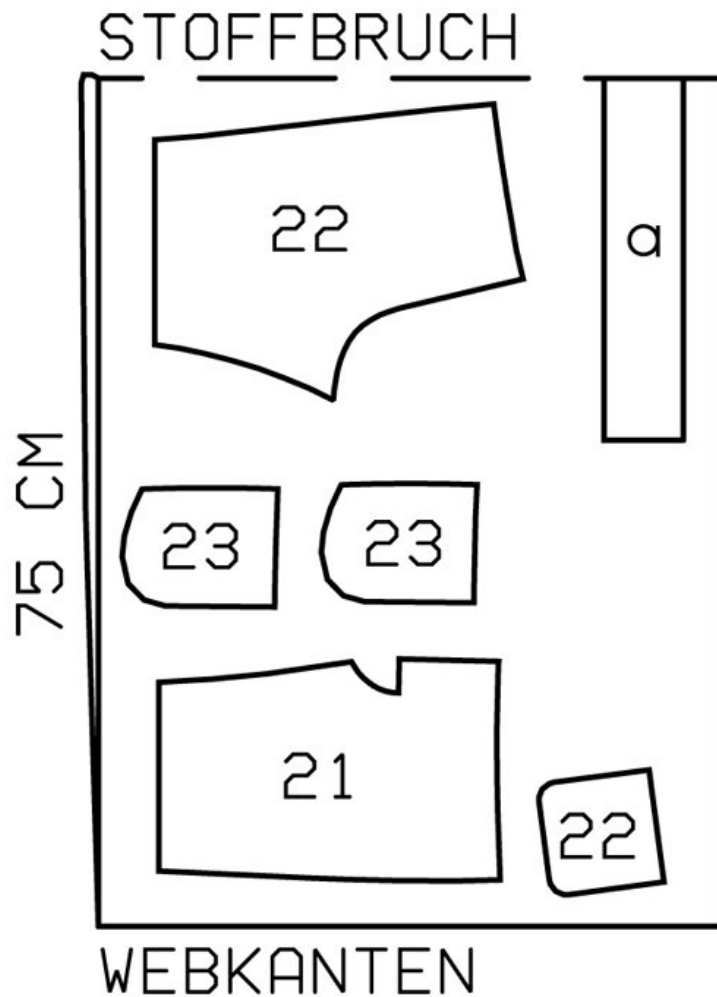


Bermuda shorts for children burda style magazine patterns FAQ

Materials

Linen

Step 1 — Preparation



146 104-128

Trace pattern pieces from pattern sheet. Trace the pocket from piece 22 as a separate pattern piece. The stitching line on slit edge of piece 21 is marked for size 104. Remark the stitching line for sizes 110 — 128.

Seam and hem allowances:

Seams and edges 1.5 cm (5/8 in), upper edge of pocket 4 cm (15/8 ins), hem 4 cm (15/8 ins).

Step 2 — Cutting Out



21 front trouser piece 2x

22 back trouser piece 2x

23 back pocket 2x

24 pocket piece 4x

a) waistband, 64 — 65.5 — 67 — 70 — 73 cm (25 1/4 — 25 7/8 — 26 1/2 — 27 3/4 — 28 3/4 ins) long, 7 cm (3 ins) wide, finished width 3.5 cm (1 1/2 ins).

Step 3 — Stretch seam edges

Lay back trouser pieces right sides facing. Stretch inside leg edges with a steam iron or press under a damp cloth until the edges match corresponding edge on front trouser piece.

Step 4 — Pockets

Press allowance on upper edges of pockets to inside, turn under and stitch 3 cm (1 1/4 ins) wide. Work buttonhole centred in pocket, about 1.5 cm (5/8 in) from upper edge. Press remaining pocket allowances to inside. Pin pockets to back trouser pieces as marked. Stitch close to edges and 7 mm (1/4 in) wide. Sew buttons in place, catching small pieces of interfaced fabric on wrong side.

Step 5 — Stitch side seams

Stitch side seams, not stitching across pocket openings.

Step 6 — In-seam pockets

Work from the inside to pin pocket pieces right sides together with seam allowances of pocket opening edges and stitch in place, directly along marked seam lines. Stitch pocket pieces close to seam, above and below pocket openings. Press pocket pieces forward and stitch together. Baste upper edges of pocket pieces in place.

Step 7 — Stitching inside leg seams

Stitch inside leg seams. Stitch centre front seam, below slit mark, and centre back seam as continuous seam. Baste slit closed above centre seam. Press facings onto left trouser piece. Topstitch left trouser piece as marked, catching facings. Undo basting.

Step 8 — Waistband

Pin ends of waistband right sides together. Stitch seam on outer waistband half, leaving seam open on inside for elastic. Press seam allowances open. Stitch waistband to upper edge of shorts. Press seam allowances onto waistband. Fold waistband half to inside, turn in inside edge and baste. Topstitch waistband close to joining seam. Insert elastic. Sew ends of elastic together for a circumference of 54 — 55 — 56 — 58 — 60 cm (21¼ — 21¾ — 22¼ — 23 — 23¾ ins).

Step 9 — Hems

Press hems to inside, turn in to a width of 2 cm (¾ in), and stitch.

BurdaStyle

5/2010 Bermuda shorts for children