

06/2010 One Shoulder Blouse

By: burda style magazine

<http://www.burdastyle.com/projects/062010-one-shoulder-blouse>

One Shoulder Blouse burda style magazine patterns FAQ

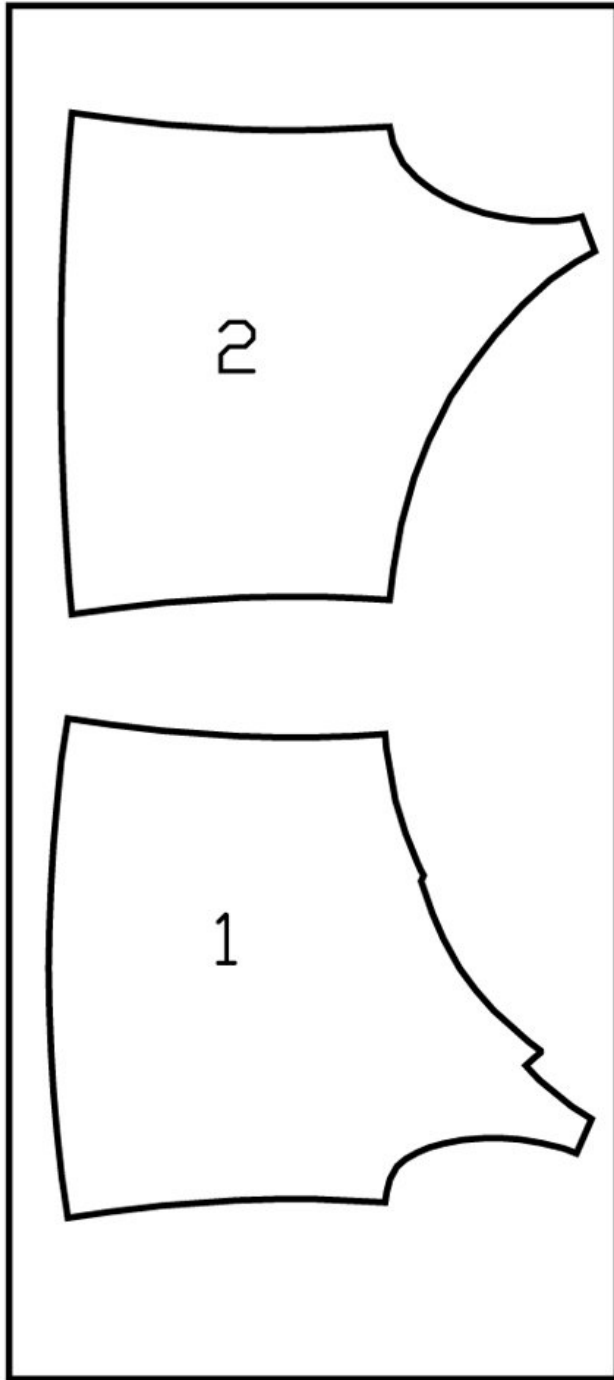
Materials

eyelet/ broderie anglaise

Step 1 — Preparation

WEBKANTE

140 CM

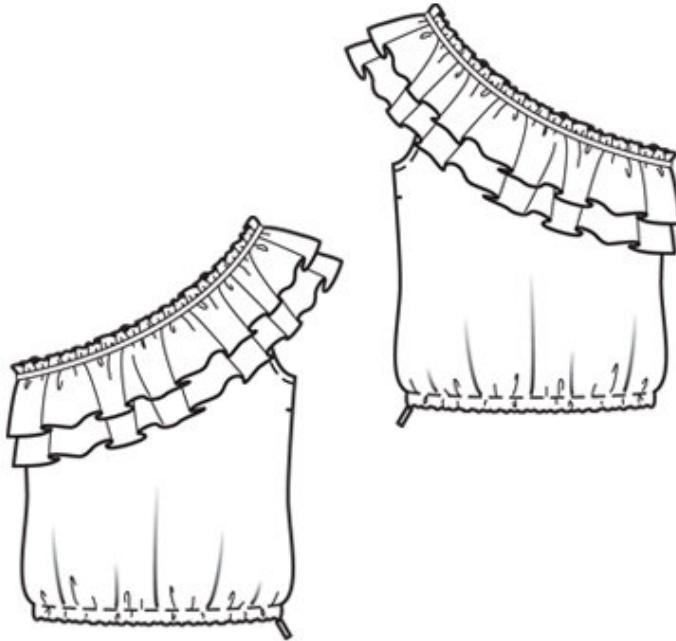


WEBKANTE

120 A 34-44

Trace the pattern pieces from the pattern sheet.
Seam and hem allowances:
Seams and edges 1.5 cm (5/8 in), hem 3 cm (1 1/4 ins).

Step 2 — Cutting out



Broderie anglaise, small pattern:

1 front 1x

2 back 1x

Broderie anglaise, large pattern:

a) bottom frill, a total of 164 â— 170 â— 176 â— 182 â— 188 â— 194 cm (64 1/2 â— 67 â— 69 1/4 â— 71 3/4 â— 74 â— 76 1/2 ins) long, 17 cm (6 3/4 ins) wide,

b) top frill, a total of 164 â— 170 â— 176 â— 182 â— 188 â— 194 cm (64 1/2 â— 67 â— 69 1/4 â— 71 3/4 â— 74 â— 76 1/2 ins) long, 12 cm (4 3/4 ins) wide. Cut lengthwise edges of frills without seam allowance.

Step 3 — Side and shoulder seam

Note: The edges of the frills are left unfinished. If you prefer, you can hem the edges narrowly.

Stitch right side seam and left shoulder seam. Trim seam allowances to 7 mm (1/4 in) wide, neaten together, and press onto back.

Step 4 — Neck edge

Unfold one edge of pre-folded bias tape and trim away to the crease. Pin trimmed edge of bias tape to neck edge, beginning at right side seam and turning in end of tape which lies underneath. Stitch bias tape to seam line of neck edge, stitching 1 cm (3/8 in) from edge of bias tape. Trim seam allowances. Turn bias tape to inside and press edge. Topstitch 7 mm (1/4 in) from neck edge.

Step 5 — Armhole

Face edge of left armhole as for neck edge. Do not turn in ends of bias tape.

Step 6 — Frill

Stitch ends of each frill piece together. Lay top frill on bottom frill, with wrong side facing right side. Baste upper edges together and gather to fit neck edge by stitching two lines of machine basting (longest stitch setting), 1 cm (3/8 in) and 2 cm (3/4 in) from upper edge of frill. Baste frill to neck edge so that upper edge extends 5 mm (3/16 in) wide.

Step 7 — Lace trim

Pin lace trim to frills over gathering lines, turning in end of trim which lies on top. Edgestitch trim in place, thereby stitching frills to neck edge.

Step 8 — Invisible zip and left side seam

Sew invisible zip to left opening edge. Begin at marked hem line. The zip should open from the hem edge, up. Stitch left side seam from upper edge to zip. Sew upper ends of seam allowances in place.

Step 9 — Hem casing

Lay hem allowance to inside, turn in, and stitch 1.5 cm (5/8 in) from fold to form elastic casing. Insert elastic and stitch ends together for a finished circumference of 80 — 84 — 88 — 92 — 96 — 100 cm (31 1/2 — 33 — 34 3/4 — 36 1/4 — 37 3/4 — 39 1/2 ins).

BurdaStyle

06/2010 One Shoulder Blouse