

# 6/2010 Belted Dress with lace trim detail

By: burda style magazine

<http://www.burdastyle.com/projects/62010-belted-dress-with-lace-trim>

---

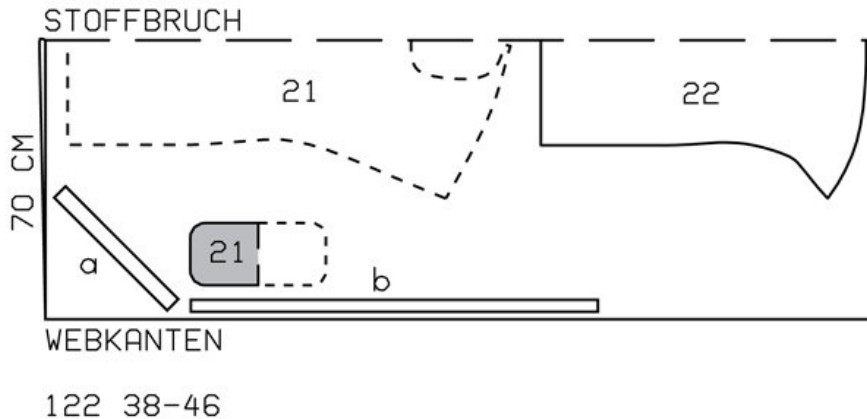
Belted Dress with lace trim detail burda style magazine patterns FAQ

## Materials

Batiste and lace trim

---

## Step 1 — Preparation



Trace the pattern pieces from the pattern sheet. Lengthen piece 21 as indicated. Trace the pocket from piece 21 as a separate pattern piece. The stitching line for the elastic casing on piece 22 is marked for size 38.

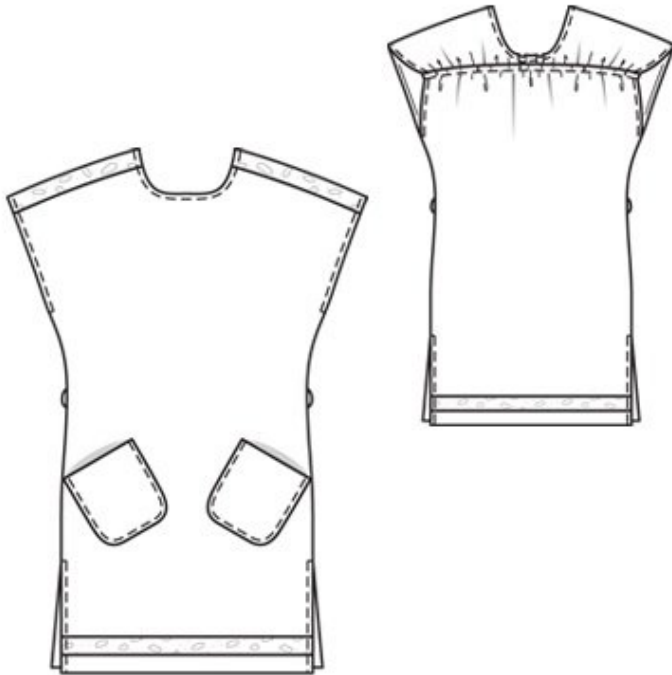
Remark the stitching line for sizes 40 — 46 accordingly.

Seam and hem allowances:

Seams and edges 1.5 cm (5/8 in), hem 4.5 cm (1 7/8 ins).

---

## Step 2 — Cutting Out



21 front with back yoke, on a fold 1x

pocket, on a fold 2x

22 back, on a fold 1x

a) bias strip for neck edge, 74 — 75 — 76 — 77 — 78 cm (29 1/4 — 29 3/4 — 30 — 30 1/2 — 30 3/4 ins) long, 4 cm (1 5/8 ins) wide (incl. allowance),

b) tie belt, a total of 204 — 208 — 212 — 216 — 220 cm (80 1/4 — 82 — 83 1/2 — 85 — 86 3/4 ins) long, 3 cm (1 1/4 ins) wide, finished width 1.5 cm (5/8 in).

Interfacing: See pattern layout.

---

### Step 3 — Lace Trim

Pin lace trim to front between marked lines. Now first edgestitch lengthwise edges of trim in place at a straight stitch setting. Cut the fabric beneath the trim along the centre between the lines of stitching and press away from trim. Now work from the right side to stitch along edges of trim with closely spaced zigzag stitching. Trim edges of fabric on inside close to zigzag stitching.

---

### Step 4 — Yoke

Stitch centre seam of back yoke. Neaten seam allowances together and press to one side. Stitch yoke to back. Press seam allowances down and stitch as marked to form casing.

---

## Step 5 — Bias strip

Fold bias strip for neck edge lengthwise and press, right side facing out. Pin doubled bias strip to neck edge so that fold edge of strip lies on garment piece, 1 cm (3/8 in) past seam line. Turn back end of strip which lies underneath and lay other end over it. Stitch along neck edge. Trim seam allowances. Lay bias strip to inside and press edge. Topstitch 7 mm (1/4 in) from neck edge.

---

## Step 6 — Elastic

Pull elastic into stitched casing on back. Stitch across ends of elastic for a finished length of 50 — 51 — 52 — 53 — 54 cm (19 3/4 — 20 1/4 — 20 1/2 — 21 — 21 1/4 ins).

---

## Step 7 — Stitch side seams

Stitch side seams from below marking at seam number 2 to slit mark. Press allowance at edges of armholes to inside, turn in to a width of 7 mm (1/4 in), and stitch.

---

## Step 8 — Pockets

Fold pockets on fabric fold line, right side facing in. Stitch side and lower edges together, leaving a section of seam open for turning. Turn pockets right side out and sew openings closed. Pin pockets to front at abutting lines. Edgestitch pockets in place and stitch again 7 mm (1/4 in) from edges.

---

## Step 9 — Lace trim and hem allowances

Pin lace trim to front and back, 3.5 cm (1 1/2 ins) above marked hem lines. Edgestitch trim in place. Cut the fabric beneath the trim along the centre between the lines of stitching. Press edge of fabric at upper seam away from trim. Lay hem allowances to outside and stitch to side slit edges, as far as seam at bottom edge of trim. Clip seam allowances at top ends of seams. Turn hem allowances to inside and press — inside edge of hem allowances lie under trim. Work from right side to stitch along upper and lower edge of trim with closely spaced zigzag stitching. Trim edges of fabric on inside, close to zigzag stitching

---

## Step 10 — Hem

Lay allowances on slit edges to inside, turn in and stitch, then stitch to edge of hem.

---

## Step 11 — Tie belt

Fold tie belt lengthwise, right side facing in. Stitch edges together, leaving a section of seam open for turning. Turn belt right side out. Sew opening closed. Work thread loops, about 2 cm (3/4 in) long, at waist level, over side seams. For each loop, stretch 3 — 4 threads, then cover them with closely spaced buttonhole stitches.

---

**BurdaStyle**

6/2010 Belted Dress with lace trim detail