

6/2010 Ruffle Skirt

By: burda style magazine

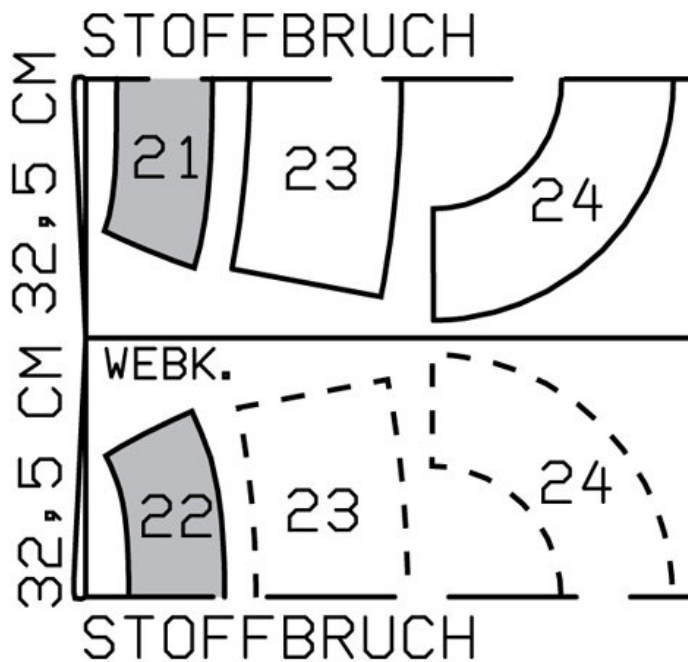
<http://www.burdastyle.com/projects/62010-ruffle-skirt>

Ruffle Skirt burda style magazine patterns FAQ

Materials

Broderie anglaise with no eyelets

Step 1 — Preparation

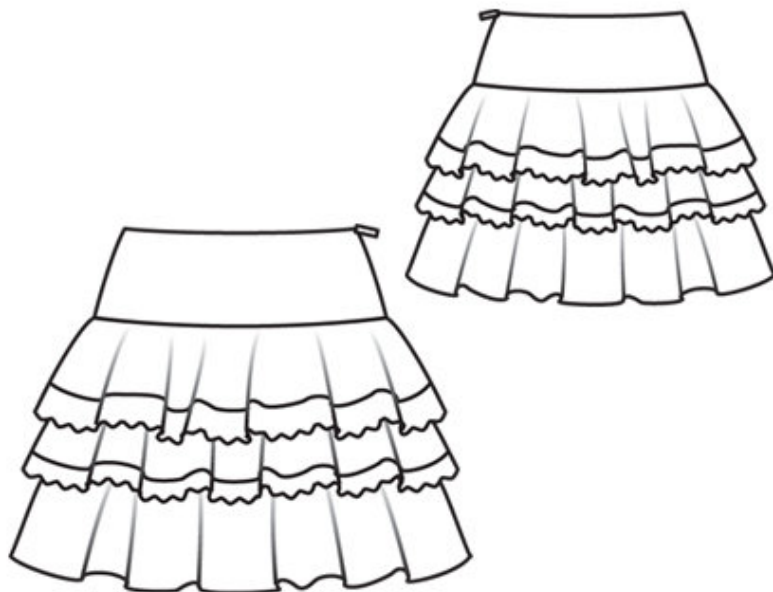


Trace the pattern pieces from the pattern sheet. Trace top and middle flounce from piece 24 each as a separate pattern piece.

Seam and hem allowances:

Seams and edges 1.5 cm (5/8 in), no allowance on lower edge of bottom flounce.

Step 2 — Cutting Out



Broderie anglaise, no eyelets:

21 front yoke, on a fold 1x

22 back yoke, on a fold 1x

23 skirt panel, on a fold 2x

24 middle flounce, on a fold 2x

Broderie anglaise with eyelets:

24 top flounce, on a fold 2x

24 bottom flounce, on a fold 2x

Plain batiste (lining): pieces 21 + 22.

Interfacing: See pattern layout.

Step 3 — Side seams

Stitch right side seams on skirt, yoke, and flounce units.

Step 4 — Top and middle flounces

Stitch 4 cm (1 5/8 in) wide trim to lower edge of top flounce and 2.5 cm (1 in) wide trim to lower edge of middle flounce.

Step 5 — Slit, basting top flounce to skirt, stitching yoke

Measure and mark a slit, 7 cm (3 ins) long, down from upper left side edge of top flounce. Lay allowances at top end of slit to inside and pin. Baste top flounce to upper edge of upper skirt, with wrong side facing right side. Stitch yoke to upper edge of skirt. Press seam allowances onto yoke.

Step 6 — Zipper

Sew invisible zip to left side edge of yoke and skirt panel, to slit mark. Do not catch flounce. Stitch left side seam from lower edge to zip. Stitch left side seam of flounce pieces, leaving slit open on top flounce. Turn in bottom ends of seam allowances diagonally and sew in place.

Step 7 — Stitching bottom and middle flounces to skirt

Stitch bottom flounce to lower edge of skirt. Topstitch skirt close to joining seam. Stitch middle flounce to skirt along joining line.

Step 8 — Face upper edge of skirt

Stitch right side seam of yoke lining, as mirror image of skirt. Lay yoke lining right sides together with skirt and pin to upper edge. At zip opening, turn yoke lining back, 5 mm (3/16 in) before edge of opening, and pin to upper edge. Lay allowances of skirt at edges of opening outward and pin to upper edge of skirt, over yoke. Stitch along at upper edge of skirt. Turn yoke lining and allowances at opening edges to inside. Turn in allowance on lower edge of yoke. Sew yoke to zip tapes and to joining seam.

BurdaStyle

6/2010 Ruffle Skirt