

# 5/2010 Ruched Tunic Top

By: burda style magazine

<http://www.burdastyle.com/projects/52010-ruched-tunic-top>

---

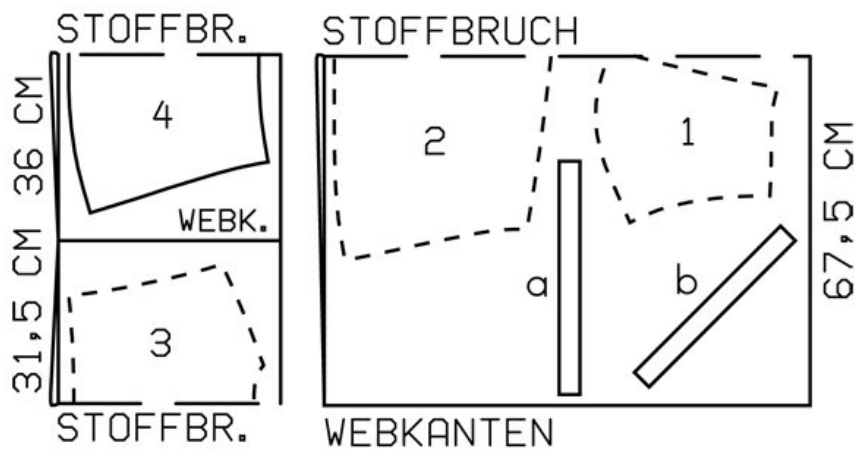
Ruched Tunic Top burda style magazine patterns FAQ

## Materials

Crpe chiffon

---

## Step 1 — Preparation



Trace the pattern pieces from the pattern sheet.

Seam and hem allowances:

Seams, edges and hem 1.5 cm (5/8 in), pieces 3 and 4 for size 46 only 1 cm (3/8 in).

---

## Step 2 — Cutting Out



1 upper front, on a fold 1x

2 lower front, on a fold 1x

3 upper back, on a fold 1x

4 lower back, on a fold 1x

a) 2 sleeve bands, 45 — 46 — 46.5 — 47 — 48 cm (17<sup>3</sup>/<sub>4</sub> — 18<sup>1</sup>/<sub>8</sub> — 18<sup>1</sup>/<sub>4</sub> — 18<sup>1</sup>/<sub>2</sub> — 19 ins) long, 4 cm (1<sup>1</sup>/<sub>2</sub> ins) wide, finish-ed width 2 cm (3/4 in),

b) bias strip for neck edge, a total of 76 — 78 — 79 — 81 — 82 cm (30 — 30<sup>3</sup>/<sub>4</sub> — 31<sup>1</sup>/<sub>4</sub> — 32 — 32<sup>1</sup>/<sub>2</sub> ins) long, 4 cm (1<sup>5</sup>/<sub>8</sub> ins) wide (incl. allowance).

Vilene Bias Tape: Iron onto neck edges.

### Step 3 — Shoulder seams

Stitch shoulder seams.

### Step 4 — Bias strip and neck edge

Fold bias strip for neck edge length-wise and press, right side facing out. Pin doubled bias strip to neck edge so that fold edge of strip lies on garment piece, 1 cm (3/8 in) past seam line. Begin and end at point of V-neck and leave ends of strip extending by about 2 cm (3/4 in). Fold extending ends to mitre and pin together (just to neck edge). Press -seam allowances open. Trim allowances to 5 mm (3/16 in) wide. Stitch bias strip to neck edge. Trim seam allowances and clip into point of neck edge. Turn bias strip to inside and press edge. Top-stitch 5 mm (3/16 in) from neck edge.

## Step 5 — Shirring

Stitch shirring on upper and lower front: Lay elastic flat along marked lines for shirring (wrong fabric side). Stitch over elastic at a zigzag setting. The stitch setting should be just wide enough to not catch the elastic, so it can be pulled to shirr the fabric. On uppermost and second shirring lines on the lower front, begin and end at seam line on joining edge. Stitch upper front to lower front, not catching extending ends of elastic. Zigzag stitch another piece of elastic directly next to seam, beginning and ending at side ends of shirring lines. Pull shirring elastic to gather fabric to a width of 15 cm (6 ins). Knot ends of elastic or darn into fabric to conceal.

---

## Step 6 — Upper and lower back

Stitch upper back to lower back. Stitch side seams below marking at seam number 4. attachment seams, with a few stitches, by hand.

---

## Step 7 — Sleeve bands

Stitch ends of each sleeve band together to form a ring. Fold sleeve bands in half lengthwise and press, wrong side facing in. Stitch lengthwise edges of bands together to edges of armholes, matching seam of sleeve band to side seam. Press seam allowances away from sleeve band.

---

## Step 8 — Hem

Press hem allowance to inside, turn under, and stitch.

---

**BurdaStyle**

5/2010 Ruched Tunic Top