

5/2010 Long sleeve Blouse

By: burda style magazine

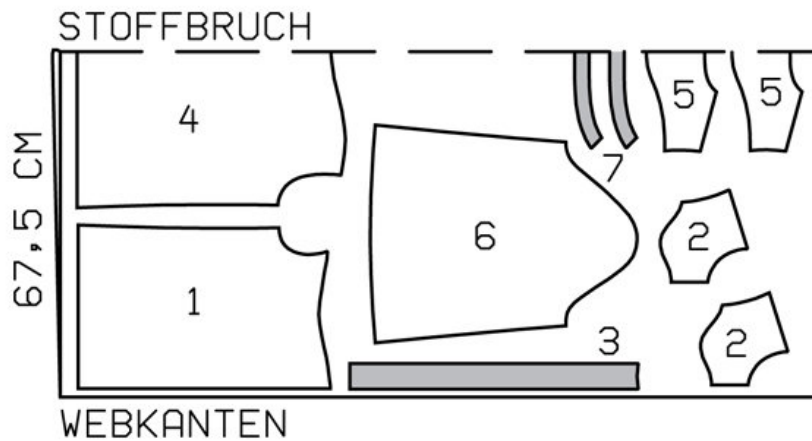
<http://www.burdastyle.com/projects/52010-long-sleeve-blouse>

Long sleeve blouse burda style magazine patterns FAQ

Materials

Batiste

Step 1 — Preparation



118 36, 38

Trace the pattern pieces from the pattern sheet.

The buttonholes on piece 3 are marked for size 36. For sizes 38 — 44, mark the top buttonhole the same distance from neck edge as for size 36. The bottom buttonhole is the same for all sizes. Space the other buttonholes evenly in between.

Seam and hem allowances:

Seams and edges 1.5 cm (5/8 in), hem and sleeve hems 2 cm (3/4 in).

Step 2 — Cutting Out



1 front 2x
2 front yoke 4x
3 front band 2x
4 back, on a fold 1x
5 back yoke, on a fold 2x
6 sleeve 2x
7 standing collar, on a fold 2x
Interfacing: See pattern layout.

Step 3 — Yokes

Baste yokes wrong sides together, turning seam allowances of front yoke pieces in toward each other at corner between neck and front edges. Treat yokes as one layer of fabric from now on. Gather upper edge of front. Gather upper edge of back between asterisks. Stitch yokes to fronts and to back. Press seam allowances onto yokes.

Step 4 — Side and Shoulder Seams

Stitch side seams and shoulder -seams. Trim seam allowances to 7 mm (1/4 in) wide, neaten together and press onto back.

Step 5 — Hem

Lay hem allowance to inside, turn half in, press, and stitch.

Step 6 — Front Bands

Stitch front bands to vertical edges of fronts. Press seam allowances of band joining seams and of other long edges of bands onto bands. Fold bands on fold line, right side facing in, and stitch across ends. Turn bands right side out. Baste inside edges in place. Topstitch bands close to joining seam.

Step 7 — Standing collar

Lay collar pieces right sides facing. Stitch along front and upper edges, beginning and ending stitching in front, exactly at seam line on joining edge. Trim seam allowances. Turn collar right side out and press. Stitch outer collar piece to neck edge. Press seam allowances onto collar. Turn in inside collar piece and baste to joining seam. Topstitch collar close to joining seam. Work a buttonhole in right end of collar.

Step 8 — Sleeves

Stitch sleeve seams, leaving seam open below hem line to insert elastic. Press sleeve hem allowances to inside, turn in and stitch 1 cm (3/8 in) wide, to form casing. Insert elastic. Sew ends together for a finished circumference of 22 — 23 — 24 — 24 — 25 cm (83/4 — 91/8 — 91/2 -91/2 -10 ins) .

Step 9 — Sleeve caps

Set in sleeves, easing sleeve caps.

Step 10 — Buttonholes

Work buttonholes in right front band.

BurdaStyle

5/2010 Long sleeve Blouse