

5/2010 Waistcoat with print lining

By: burda style magazine

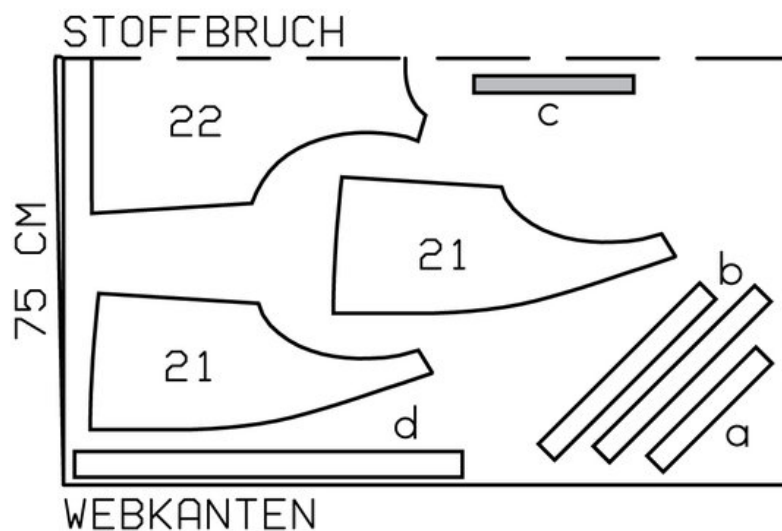
<http://www.burdastyle.com/projects/52010-waistcoat-with-print-lin>

Waistcoat with print lining burda style magazine patterns FAQ

Materials

Plain and print poplin

Step 1 — Preparation



123 34-42
POPELINE

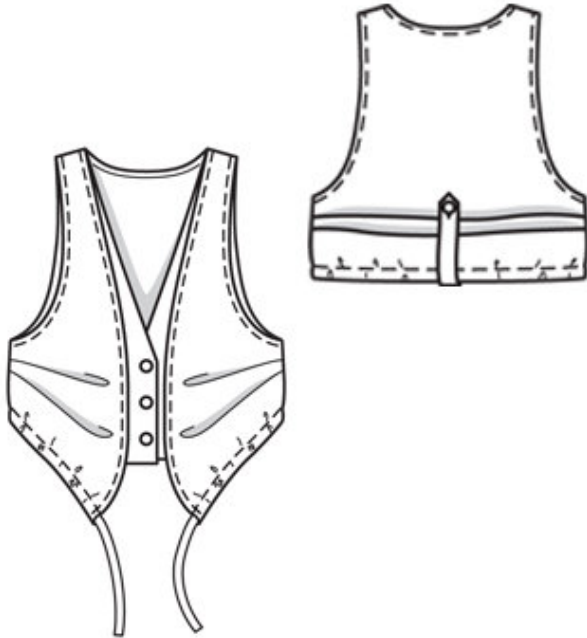
Trace the pattern pieces from the pattern sheet.

The pleat arrows marked on pieces 21, 22 and 23 are for size 34. Remark the pleat arrows for the other sizes accordingly.

Seam and hem allowances:

Seams and edges 1.5 cm (5/8 in), hem (pieces 21 and 22) 3 cm (1 1/4 ins).

Step 2 — Cutting Out



Poplin:

21front 4x

22back, on a fold 1x

a) bias strip for back neck edge, 27 cm (10³/₄ ins) long, 4 cm (1⁵/₈ in) wide -(incl. allowance),

b) 2 bias strips for armholes, each a total of 67 â— 69 â— 70 â— 72 â— 73 cm (26¹/₂ â— 17¹/₄ â— 27³/₄ â— 28¹/₂ â— 28³/₄ ins) long, 4 cm (1⁵/₈ in) wide (incl. allowance),

c) 2 back tab pieces, 28 cm (11¹/₈ ins) long, 3 cm (1¹/₄ ins) wide,

d) drawstring band, a total of 128 â— 132 â— 136 â— 140 â— 144 cm (50¹/₂ â— 52 â— 53¹/₂ â— 55¹/₄ â— 56³/₄ ins) long, 4.5 cm (1⁷/₈ ins) wide (incl. allowance).

Batiste:

23inside front 4x

Interfacing: See pattern layout. Iron interfacing onto one tab piece.

Step 3 — Front pieces

Lay two front pieces each right sides together. Stitch along front edge and neck edge. Trim seam allowances. Turn fronts right side out and press faced edges. Baste open edges together. Topstitch 7 mm (1/4 in) from front and neck edges.

Step 4 — Darts, inside front pieces, basting inside fronts and fronts

Stitch darts in inside fronts. Trim dart allowances to 1 cm (3/8 in) wide and press open, pressing points of darts flat. Lay two inside fronts each right sides together. Stitch along hem edge, front edge and neck edge. Turn pieces right side out and press edges. Baste open edges together. Lay inside fronts under fronts. Baste to edges of side seams, armholes and shoulder seams.

Step 5 — Shoulder seams

Stitch shoulder seams — allowance of back extends at neck edge. Trim shoulder seam allowances to 7 mm (1/4 in) wide, neaten together and press onto back.

Step 6 — Back neck edge:

Fold bias strip for back neck edge lengthwise and press, right side facing out. Pin doubled bias strip to neck edge so that fold edge of strip lies on garment piece, 1 cm (3/8 in) past seam line. Stitch along neck edge. Trim seam allowances. Lay bias strip up and turn ends in. Lay -bias strip to inside and press edge. Topstitch 7 mm (1/4 in) from neck edge.

Step 7 — Armholes and bias strips

Face edges of armholes with bias strips as for neck edge. Do not turn in ends of bias strips. Topstitch 7 mm (1/4 in) from arm-hole.

Step 8 — Side seams

Stitch side seams (seam number 2). Neaten seam allowances together and press onto back. Sew top ends of seam allowances in place.

Step 9 — Forming the casing

Lay hem allowance to inside, turn in and stitch as marked to form casing.

Step 10 — Pleats

Fold pleats at side seams in arrow direction and pin. Work from right side of fabric to stitch in line of seam.

Step 11 — Drawstring band

Turn in ends of drawstring band. Fold band lengthwise, right side facing in. Stitch 1.2 cm (1/2 in) from fold edge. Turn drawstring right side out and press. Sew ends of draw-string closed. Pull drawstring through casing at hem edge.

Step 12 — Back tab

Lay tab pieces right sides together. Trim one end at a point. -Stitch along lengthwise edges and pointed end. Turn tab right side out. Topstitch close to edges. Work a buttonhole in point-ed end. Turn in straight end of tab and lay on inside of back as marked. Stitch end in place, stitching a square and crisscross. Sew button to right fabric side of back, over end of tab.

Step 13 — Snaps

Mark placement of snaps on inside fronts along centre front as follows: top snap 5 cm (2 ins) below neck edge, 2 more snaps further down, each spaced 6 cm (2³/₈ ins) apart. Attach snaps, with the top halves on the right and bottom halves on the left.

BurdaStyle

5/2010 Waistcoat with print lining