

# 5/2010 Skirt with drawstring band detail

By: burda style magazine

<http://www.burdastyle.com/projects/52010-skirt-with-drawstring-ba>

---

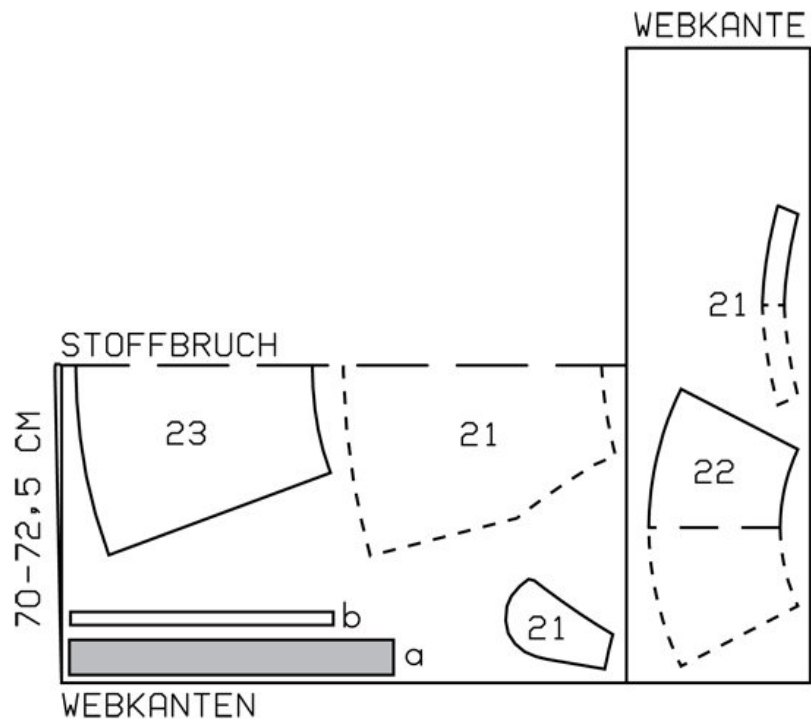
Skirt with drawstring band detail burda style magazine patterns FAQ

## Materials

Batiste

---

## Step 1 — Preparation



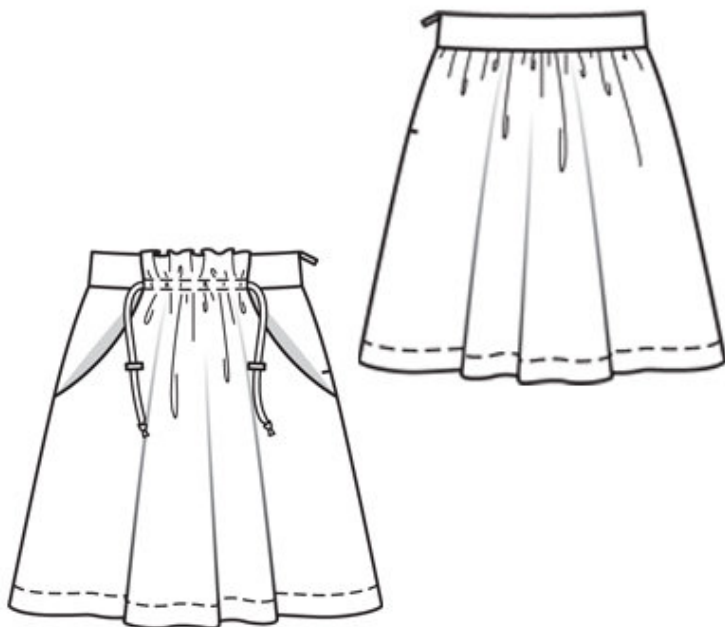
Trace the pattern pieces from the pattern sheet. Note different hem lines for views A and B. Trace the pocket piece from piece 21 as a separate pattern piece — it is the same for all sizes. Trace the facing from piece 21 as a separate pattern piece.

Seam and hem allowances:

Seams and edges 1.5 cm (5/8 in), hem 3 cm (1 1/4 ins).

---

## Step 2 — Cutting Out



21 front skirt panel, on a fold 1x

â— â— facing, on a fold 1x

â— â— pocket piece 2x

22 hip yoke, on a fold 1x

23 back skirt panel, on a fold 1x

a) waistband, 70 â— 74 â— 78 â— 82 â— 86 cm (27<sup>3</sup>/<sub>4</sub> â— 29<sup>1</sup>/<sub>4</sub> â— 30<sup>3</sup>/<sub>4</sub> â— 32<sup>1</sup>/<sub>2</sub> â— 34 ins) long, 8 cm (3<sup>1</sup>/<sub>4</sub> ins) wide, finished width 4 cm (1<sup>5</sup>/<sub>8</sub> ins),

b) drawstring band, 58 â— 60 â— 62 â— 64 â— 66 cm (23 â— 23<sup>3</sup>/<sub>4</sub> â— 24<sup>1</sup>/<sub>2</sub> â— 25<sup>1</sup>/<sub>4</sub> â— 26 ins) long, 3 cm (1<sup>1</sup>/<sub>4</sub> ins) wide (incl. -allowance).

Interfacing: Iron onto waistband.

---

## Step 3 — Facing, pocket pieces, front skirt panel, hip yoke

Neaten lower edge of facing. Pin facing right sides together with upper edge of front skirt panel. Stitch along side edges and upper edge, beginning and ending exactly at upper marking for casing. Stitch pocket pieces right sides together with -pocket opening edges, beginning at top exactly at lower marking for casing. Turn pocket pieces and facing to inside. Press edges. Baste upper edges of pocket pieces and lower edge of facing in place. Topstitch upper edge of front skirt panel as marked, to form casing. Lay pocket opening edges of front skirt panel on hip yoke, at placement lines. Pin pocket opening edges in place, from side edge, about 5 cm (2 ins) long. Stitch pocket pieces to hip yoke as far as marking, matching seam lines. Baste side seam edges together below pocket openings.

---

## Step 4 — Back skirt panel

Gather upper edge of back skirt panel to 35 — 37 — 39 — 41 — 43 cm (13<sup>3</sup>/<sub>4</sub> — 14<sup>1</sup>/<sub>2</sub> — 15<sup>1</sup>/<sub>2</sub> — 16<sup>1</sup>/<sub>4</sub> — 17 ins).

---

## Step 5 — Right side seam

Stitch right side seam. Press seam allowances open.

---

## Step 6 — Waistband

Fold waistband in half lengthwise and press, wrong side facing in. Unfold waistband again. Stitch waistband to upper edge of hip yoke and back skirt panel. Press allowances of joining seam onto waistband. Sew invisible zip to left opening edges and outer half of waistband, see — Helpful Hint — on page 12. Stitch left side seam from lower edge to zip. Baste waistband over joining seam on inside and sew to zip tapes. Work from right side to stitch in line of joining seam.

---

## Step 7 — Drawstring Band

Fold drawstring band lengthwise, right side facing in. Stitch 7 mm (1/4 in) from fold edge. Turn band right side out and press. Pull drawstring into casing. Push fabric together along drawstring to gather to 20 — 22 — 24 — 26 — 28 cm (8 — 8<sup>3</sup>/<sub>4</sub> — 9<sup>1</sup>/<sub>2</sub> — 10<sup>1</sup>/<sub>4</sub> — 11<sup>1</sup>/<sub>8</sub> ins). Distribute gathering evenly. Lay front skirt panel on hip yoke so that pocket opening edges meet placement lines and lower stitching line of casing lies on waistband joining seam. Stitch skirt panel along lower stitching line. Slip cord stoppers over ends of drawstring. Knot ends of drawstring.

---

## Step 8 — Hem

Press hem allowance to inside. Stitch hem 2.5 cm (1 in) wide.

---

**BurdaStyle**

5/2010 Skirt with drawstring band detail