

5/2010 Bermuda shorts

By: burda style magazine

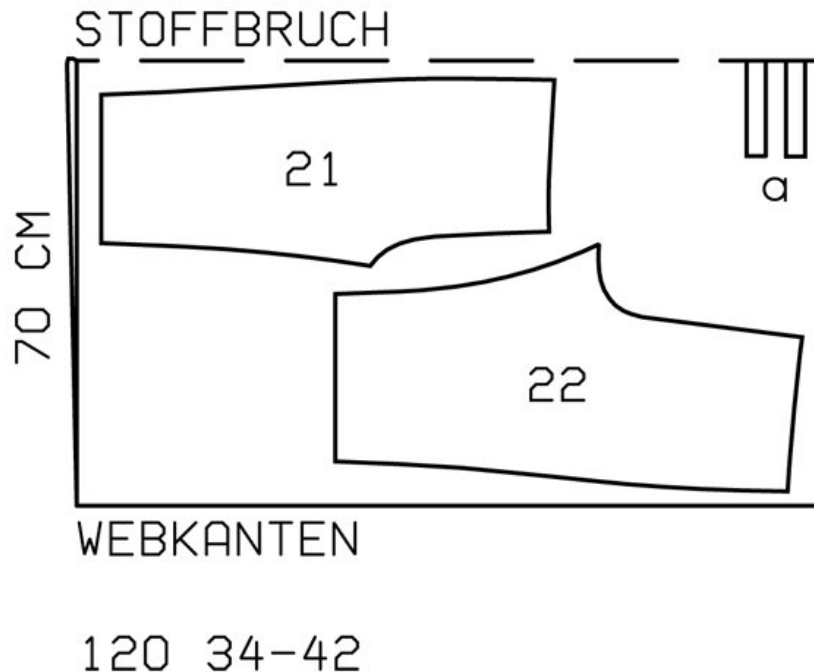
<http://www.burdastyle.com/projects/52010-bermuda-shorts>

Bermuda shorts burda style magazine patterns FAQ

Materials

Batiste

Step 1 — Preparation



Trace the pattern pieces from the pattern sheet. Follow lines and details for style 120. The fold lines and stitching lines for the elastic casing on pieces 21 and 22 are marked on the pattern for size 34 only. For sizes 36 — 42, remark the lines according to the size lines. The eyelet on piece 21 is marked for size 34. Remark the eyelet for the other sizes accordingly.
Seam and hem allowances:
Seams and edges 1.5 cm (5/8 in), hem 3 cm (1 1/4 ins).

Step 2 — Cutting Out



21 front trouser piece 2x

22 back trouser piece 2x

a) 2 tie bands, 30 cm (12 ins) long, 3 cm (1 1/4 ins) wide (incl. allowance).

Step 3 — Side seams and inside leg seams

Stitch side seams and inside leg seams. Trim seam allowances to 7 mm (1/4 in) wide, neaten together and press onto back. Place one trouser leg inside the other, with right sides -facing. Stitch front and back centre seam as continuous seam. Press seam allowances open from upper edges to beginnings of curve. Do not press seam allowances flat along curve.

Step 4 — Eyelets

Insert eyelets in upper edge of trousers, first ironing small pieces of inter-facing to wrong side, for reinforcement

Step 5 — Tie bands

Fold tie bands lengthwise, right side facing in. Stitch 7 mm (1/4 in) from fold edge. Trim seam allowances. Turn tie bands right side out and press.

Step 6 — Upper edge of trousers

Turn allowance on upper edge of trousers to inside on fold line, turn in to 4.2 cm (a good 15/8 ins) wide, and press. Top-stitch 4 cm (15/8 ins) from upper edge of trousers, from marked ends of elastic, to form casing. Do not yet topstitch in front between markings. Stitch tie bands to ends of elastic and pull into casing. Stitch ends of elastic in place, as marked for a finished length of 57 — 61 — 65 — 69 — 73 cm (22 1/2 — 24 — 25 3/4 — 27 1/4 — 38 3/4 ins). Run tie bands out through eyelets. Slip cord stoppers over ends of tie bands. Knot ends of tie bands. Top-stitch 4 cm (1 5/8 ins) from upper edge of trousers, between ends of casing.

Step 7 — Hem

Press hem allowances to inside, turn under and stitch.

BurdaStyle

5/2010 Bermuda shorts