

5/2010 Peplum Blouse

By: burda style magazine

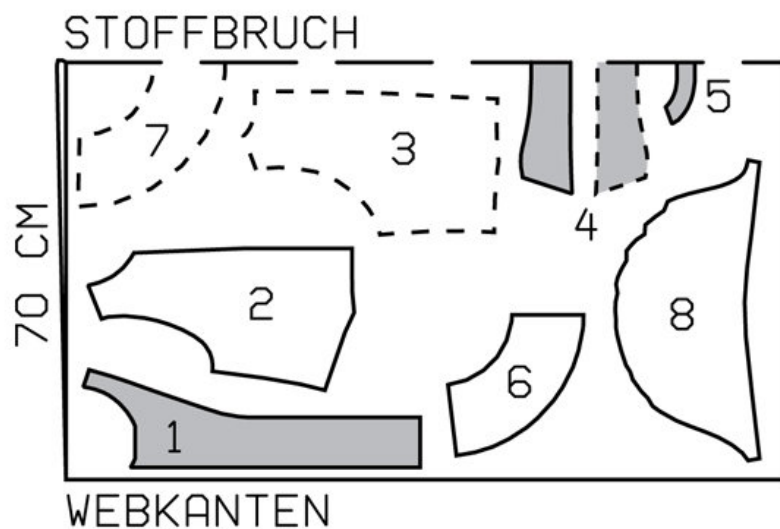
<http://www.burdastyle.com/projects/52010-peplum-blouse>

Peplum Blouse burda style magazine patterns FAQ

Materials

Batiste

Step 1 — Preparation



Trace the pattern pieces from the pattern sheet. The stitching line for the elastic casing on piece 8 is marked for size 34. Remark the line for sizes 36 — 42 accordingly.

Seam and hem allowances:

Seams, edges and hem 1.5 cm (5/8 in), sleeve hems 3 cm (11/4 ins).

Step 2 — Cutting Out



1 front band with self-facing 2x
2 front 2x
3 back 2x
4 collar, on a fold 2x
5 back facing, on a fold 1x
6 front peplum 2x
7 back peplum, on a fold 1x
8 sleeve 2x
Interfacing: See pattern layout.

Step 3 — Darts

Stitch front darts. Trim dart allowances to 7 mm (1/4 in) wide, neaten and press toward centre. Stitch back darts and press toward centre.

Step 4 — Seams

Stitch centre back seam, side seams and shoulder seams. Stitch side seams of peplum. Stitch peplum to front and back pieces. Press seam allowances up.

Step 5 — Hem

Trim hem allowance to 7 mm (1/4 in) wide and neaten. Press hem allowance to inside. Topstitch close to edge of hem.

Step 6 — Front bands

Stitch front bands to fronts and peplum. Press seam allowances onto bands. Topstitch bands close to joining seam.

Step 7 — Self-facings and back facing

Lay self-facings outward and stitch to back facing. Stitch facing to neck edge, from front edge (fold) to marking (seam number 7). Leave facing lying right sides together with blouse for now.

Step 8 — Notched collar

Stitch collar pieces right sides together along outer edges, beginning and ending stitching exactly at seam line on joining edges. Turn collar right side out and press. Lay collar between blouse and facing. Stitch undercollar to neck edge of blouse and stitch top collar piece to facing. Press seam allowances open. Turn facing to inside. Pin collar joining seams together. In back, lay -facing up again and stitch seam allowances together, close to collar joining seam. Lay facing down again and sew to shoulder -seams. Press front edges.

Step 9 — Sleeves

Fold pleats in sleeves in arrow -direction and baste. Stitch sleeve seams. Press seam allowances open. Press sleeve hem allowances to inside, turn in and stitch as marked to form casing. Insert elastic. Stitch ends of elastic as marked for a finished length of 9 — 10 — 11 — 12 — 13 cm (3 1/2 — 4 — 4 3/8 — 4 3/4 — 5 1/4 ins). Stitch remaining hem allowances in place.

Step 10 — Set in sleeves

Set in sleeves

Step 11 — Buttonholes

Work 6 vertical buttonholes along centre of right front band. Work top buttonhole 15 — 16 — 16.5 — 17.5 — 18.5 cm (6 — 6 3/8 — 6 1/2 — 7 — 7 1/4 ins) below neck edge. Place bottom buttonhole 12 cm (4 3/4 ins) above hem edge. Space remaining buttonholes evenly in between.

BurdaStyle

5/2010 Peplum Blouse