

5/2010 Lightweight Blazer

By: burda style magazine

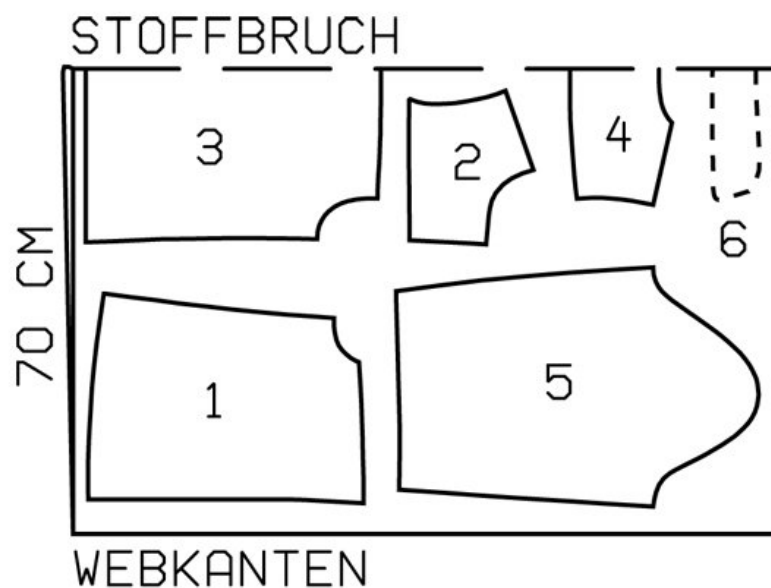
<http://www.burdastyle.com/projects/52010-lightweight-blazer>

Lightweight blazer burda style magazine patterns FAQ

Materials

Batiste and batting

Step 1 — Preparation



126 36-42
BATIST HELL

Trace the pattern pieces from the pattern sheet.

Seam and hem allowances:

Seams and edges 1.5 cm (5/8 in).

Step 2 — Cutting Out



Light-coloured fabric (outside):

- 1 front 2x
- 2 front yoke 2x
- 3 back, on a fold 1x
- 4 back yoke, on a fold 1x
- 5 sleeve 2x
- 6 top collar, on a fold 1x

Dark-coloured fabric (inside):

- 1 front 2x
- 2 front yoke 2x
- 3 back, on a fold 1x
- 4 back yoke, on a fold 1x
- 5 sleeve 2x
- 6 undercollar, on a fold 1x

a) bias binding strip for hem edge, 106 — 110 — 114 — 118 — 122 cm (41³/₄ — 43¹/₂ — 45 — 46¹/₂ — 48 ins) long, 4 cm (1⁵/₈ ins) wide (incl. allowance),

b) 2 bias binding strips for front edges and edges of lapels, 60 — 61 — 62 — 63 — 64 cm (2³/₄ — 24 — 24¹/₂ — 24³/₄ — 25¹/₄ ins) long, 4 cm (1⁵/₈ ins) wide (incl. allowance),

c) bias binding strip for collar, 52 — 53 — 54 — 55 — 56 cm (20¹/₂ — 21 — 21¹/₄ — 21³/₄ — 22¹/₄ ins) long, 4 cm (1⁵/₈ ins) wide (incl. allowance),

d) 2 bias binding strips for bottom edges of sleeves, 32 — 33 — 34 — 35 — 36 cm (12³/₄ — 13 — 13¹/₂ — 13³/₄ — 14¹/₄ ins) long, 4 cm (1⁵/₈ ins) wide (incl. allowance),

e) 4 bias welt strips, 15 cm (6 ins) long, 4 cm (15/8 ins) wide (incl. allowance),

f) 4 pocket pieces, 15 cm (6 ins) wide, 13 cm (51/4 ins) long (incl. allow-ance).

Batting: pieces 1 to 6 and also piece e. Baste batting pieces 1 to 6 to wrong sides of light-coloured fabric -pieces. Separate the layers of batting and use just half the thickness for the welts (piece e).

Step 3 — Darts (Outside of Jacket)

Stitch front darts. Trim dart allow-ances to a width of 1 cm (3/8 in) and press forward. Topstitch close to dart seams.

Step 4 — Construct welt pockets on fronts (Outside of Jacket)

Mark abutting lines for welts on right side of fabric with basting thread, 1 cm (3/8 in) from welt joining lines (fin-ished width of welts). Fold welt strips lengthwise with right side out and press. Lay doubled welt strips on fronts and pin so that fold edges of welts meet abutting lines and open edges touch. Stitch each welt along joining lines, 1 cm (3/8 in) from fold edge. Slash between lines of stitching and clip diagonally toward each last stitch but do not cut welts. Lay welts into pocket openings and press. Fold small triangles at -pocket opening ends to inside and stitch to welts, across base of each triangle. Top-stitch welts along joining seams at a large zigzag setting, using contrasting sew-ing thread. Stitch pocket pieces to -allowances of welt joining seams. Trim pocket pieces even and stitch together.

Step 5 — Yokes (Outside of Jacket)

Stitch front yokes to fronts and back yoke to back. Topstitch yokes close to joining seams.

Step 6 — Side seams (Outside of Jacket)

Stitch side seams, shoulder seams and sleeve seams. Press seam allowances open.

Step 7 — Sleeve caps (Outside of Jacket)

Set in sleeves, easing sleeve caps.

Step 8 — Collar (Outside of Jacket)

Lay top collar and undercollar pieces wrong sides facing and baste joining edges together. Roll collar to give top collar more fullness, then pin edges of collar together. Work from underside of collar to baste Outer edges of collar together, next to seam allowances. Trim away allowances on out-er edges.

Step 9 — Bind edge of collar (Outside of Jacket)

Fold binding strip in half lengthwise and press, righ side facing out. Unfold strip out flat again. Now turn each lengthwise edge of strip in to pressed crease, one after the other, and press again. Then fold strip again. Lay binding strip over outer edges of collar and -baste, easing joining edge of bind-ing on rounded corners. Stitch bind-ing in place, with zigzag stitching.

Step 10 — Basting collar and neck edge (Outside of Jacket)

Baste collar to neck edge, from marking.

Step 11 — Darts and Yokes (Inside of Jacket)

Stitch front darts and press toward centre. Stitch front yokes to fronts and back yoke to back. Stitch side seams, shoulder seams and sleeve seams.

Step 12 — Sleeve caps (Inside of jacket)

Set in sleeves, easing sleeve caps.

Step 13 — Stitching inside and outside jackets

Lay outside and inside of jacket right sides facing. Pin neck edges together, catching collar in between. Stitch along neck edge, beginning and ending 1 cm (3/8 in) before mark-ing. Trim seam allowances and clip at ends of seam. Lay outside and inside jacket wrong sides together, placing sleeves one inside the other. Baste outer edges of jacket and bottom edges of sleeves together next to -seam allowances. Trim away seam allowances.

Step 14 — Binding strips, lapels, and sleeves (Double Jacket)

To prepare for outer edges of jacket and bottom edges of sleeves, press binding strips as for collar. Lay binding strip around bottom edge of jacket and stitch in place with zigzag stitching. Bind front edges and edges of lapels, making small folds in binding at corners of lapels. Also turn beginning and end of binding under. Unfold pressed binding strips for bottom edges of sleeves and stitch ends of each strip together to fit edges of sleeves. Bind sleeve edges.

BurdaStyle

5/2010 Lightweight Blazer