

5/2010 Blouse with frill details

By: burda style magazine

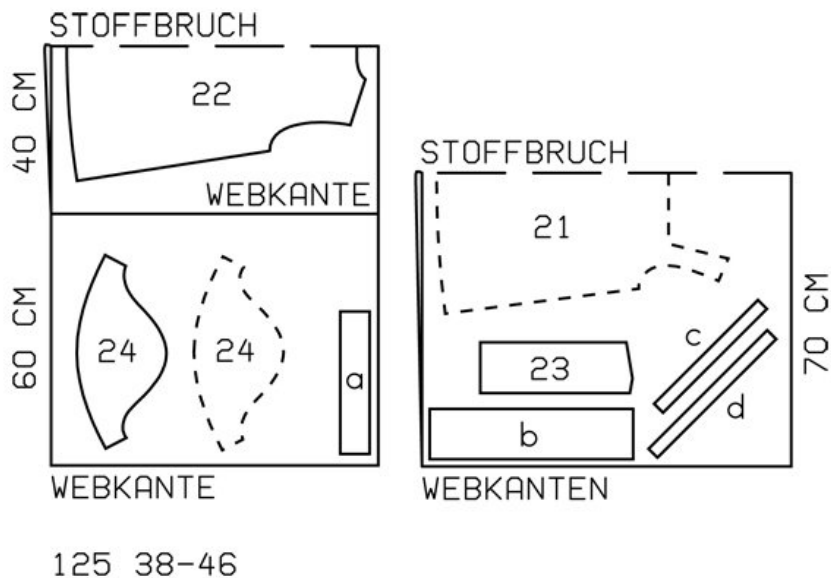
<http://www.burdastyle.com/projects/52010-blouse-with-frill-details>

Blouse with frill details burda style magazine patterns FAQ

Materials

Batiste

Step 1 — Preparation



Trace the pattern pieces from the pattern sheet. Complete smocking lines to side edge on pieces 21 and 22 and to upper edge on piece 23.

Seam and hem allowances:

Seams and edges 1.5 cm (5/8 in), hem 3 cm (1 1/4 ins).

Step 2 — Cutting Out



21 front, on a fold 1x

22 back, on a fold 1x

23 front neck frill 2x

24 sleeve 2x

a) back neck frill, 34 — 35 — 36 — 37 — 38 cm (13 1/2 — 13 3/4 — 14 1/4 — 14 1/2 — 15 ins) long, 7 cm (3 ins) wide, finished width 3.5 cm (1 1/2 ins),

b) 2 sleeve frills, each 48.5 — 50.5 — 52.5 — 54.5 — 56.5 cm (19 1/8 — 20 — 20 3/4 — 21 1/2 — 22 3/8 ins) long, 12 cm (4 3/4 ins) -wide,

c) bias binding strip for front slit, 35 cm (13 3/4 ins) long, 3 cm (1 1/4 ins) -wide (incl. allowance),

d) 2 tie bands, cut on bias, 40 cm (16 ins) long, 3 cm (1 1/4 ins) wide (incl. allowance).

Step 3 — Slit

Cut slit in centre front to marking. Spread cut edges open to a straight line and stitch to one lengthwise edge of binding strip as narrowly as possible. Press binding strip over joining seam into opening, then turn in to a width of 7 mm (1/4 in) and sew in place along joining seam. Mitre binding at bottom of opening.

Step 4 — Front neck edges

Gather front neck edges to 5 cm (2 ins) between asterisks.

Step 5 — Front neck frills and elastic

Fold front edge of front neck frills outward on fold line and stitch to bottom end, from fold to first smocking line. Clip seam allowances at end of seam. Trim allowances along length of seam. Turn front edge of frill right side out, press and baste at the top. Lay pieces of elastic on wrong fabric side of each frill, placing one piece along each of the 3 marked smocking lines and one along seam line of long joining edge. Zigzag stitch over elastic. The stitch setting should be just wide enough to not catch the elastic, so it can be pulled to shirr the fabric. Pull elastic to gather fabric as follows: front elastic to 17 \hat{a} — 17.5 \hat{a} — 18 \hat{a} — 18.5 \hat{a} — 19 cm (63/4 \hat{a} — 7 \hat{a} — 7 1/8 \hat{a} — 7 1/4 \hat{a} — 7 1/2 ins), side elastic to 14.5 \hat{a} — 15 \hat{a} — 15.5 \hat{a} — 16 \hat{a} — 16.5 cm (53/4 \hat{a} — 6 \hat{a} — 6 1/4 \hat{a} — 6 3/8 \hat{a} — 6 1/2 ins), and graduate the gathering of elastic in between, evenly. Sew ends of elastics to seam allowances.

Step 6 — Stitching front neck frills to side neck edges and stitching tie bands

Stitch front neck frills to side neck edges, from upper edge (seam number 1) to corner. Clip seam allowance of front into corners. Stitch bottom end of frills to front, as far as marking. Press seam allowances of frill-joining seams onto front and press allowances at front neck edges to inside. Topstitch front neck edges and continue along frill joining seam, as marked, to form casing, ending stitching exactly below corner. Turn in one end of each tie band. Fold bands lengthwise, right side facing in. Stitch 7 mm (1/4 in) from fold edge. Turn tie bands right side out and press. Sew turned-in ends of tie bands closed. Pull tie bands into casings. -Stitch ends of bands in place below corners.

Step 7 — Back neck frill

Fold back neck frill lengthwise, right side facing out, and press. Gather frill and stitch to back neck edge. Lay frill up and press seam allowances of joining seam down.

Step 8 — Shoulder seams

Stitch shoulder seams, then continue seam, to stitch frills together. Press seam allowances onto back, turn in and sew to back frill.

Step 9 — Smocking

Stitch smocking on front and back, each as marked, stitching to side seam line. Pull elastic threads to gather fabric to 9 \hat{a} — 10 \hat{a} — 11 \hat{a} — 12 \hat{a} — 13 cm (3 1/2 \hat{a} — 4 \hat{a} — 4 3/8 \hat{a} — 4 3/4 \hat{a} — 5 1/4 ins), knot securely, and hide ends of elastic.

Step 10 — Side seams and hem

Stitch side seams. Press hem allowance to inside and stitch 2 cm (3/4 in) wide.

Step 11 — Sleeves

Stitch sleeve seams. Stitch ends of each sleeve frill together to form a ring. Stitch frills to lower edges of sleeves, right sides facing. Lay frills downward. Press seam allowances open. Fold frills to inside, 4.5 cm (17/8 ins) below joining seam, and press fold edge. Baste inside edges of frills to lines for elastic casing,

distributing extra width evenly. Topstitch sleeves as marked to form elastic casing. Also stitch in line of frill joining seam. To insert elastic, unpick frill seams on inside, between stitching lines for casing. Insert elastic. Sew ends of elastic together for a circumference of 28 — 29 — 30 — 31 — 32 cm (11 1/8 — 11 1/2 — 12 — 12 1/4 — 12 3/4 ins) .

Step 12 — Sleeve caps

Set in sleeves, easing sleeve caps.

BurdaStyle

5/2010 Blouse with frill details