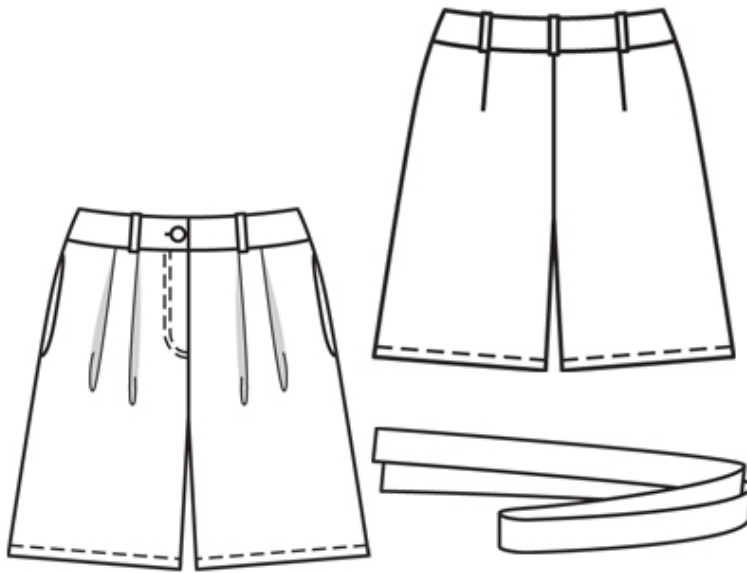


5/2010 Belted Bermuda Shorts

By: burda style magazine

<http://www.burdastyle.com/projects/52010-belted-bermuda-shorts>

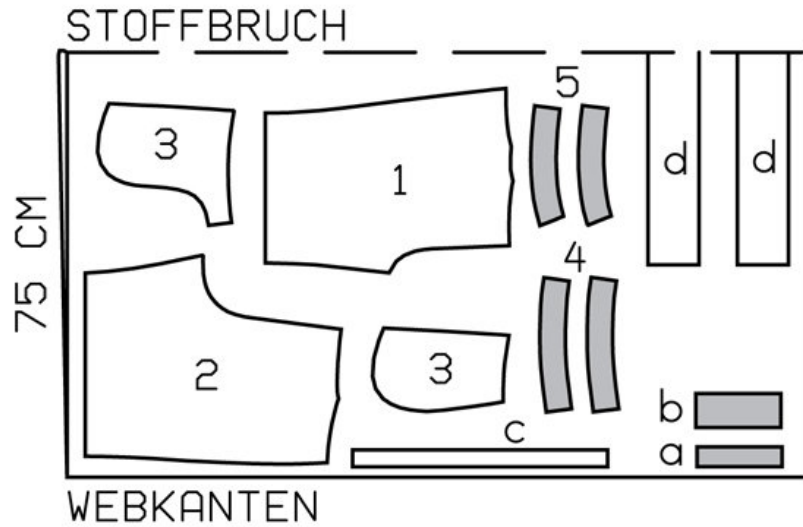


Belted Bermuda Shorts burda style magazine patterns FAQ

Materials

Plaid seersucker

Step 1 — Preparation



135 36-44

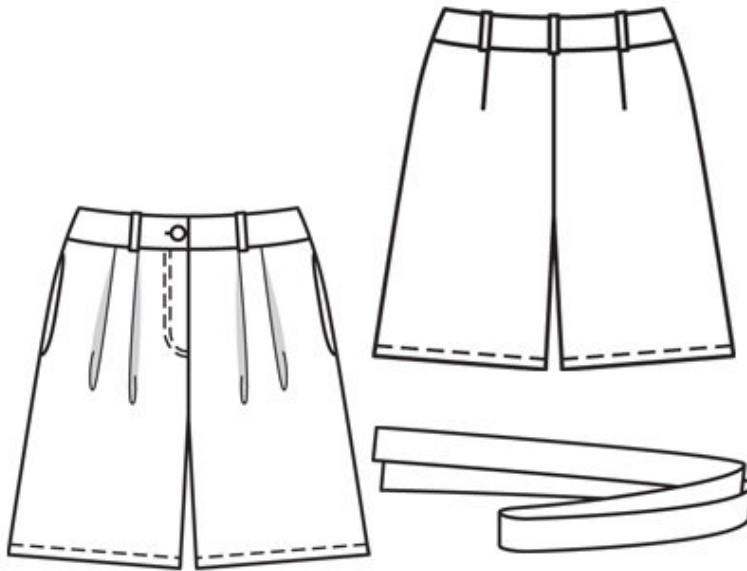
Trace the pattern pieces from the pattern sheet. Trace piece 3 again just to the stitching line (= small pocket piece).

The pleat arrows on piece 1 are marked for size 36. Mark the pleat arrows for the other sizes according to the size lines. The stitching lines at the zip fly opening are marked for size 36. For sizes 38 — 44, mark the stitching lines the same distance from centre front as for size 36.

Seam and hem allowances:

Seams and edges 1.5 cm (5/8 in), hem 3 cm (1 1/4 ins).

Step 2 — Cutting Out



1 front trouser piece 2x

2 back trouser piece 2x

3 large pocket piece 2x

4 small pocket piece 2x

4 front waistband 4x

5 back waistband 4x

a) right facing piece, 15 cm (6 ins) long, 3.5 cm (1 1/2 ins) wide,

b) left underlap piece, 15 cm (6 ins) long, 7 cm (3 ins) wide, finished width 3.5 cm (1 1/2 ins),

c) strip for 5 belt carriers, 45 cm (18 ins) long, 3 cm (1 1/4 ins) wide (incl. allow-),

d) tie belt, a total of 145 — 150 — 155 — 160 — 165 cm (57 — 59 — 61 — 63 — 65 1/2 ins) long, 9 cm (3 1/2 ins) wide, finished width 4.5 cm (1 3/4 ins).

Interfacing: See pattern layout.

Step 3 — Pleats

Fold pleats in front trouser pieces in arrow direction and baste.

Step 4 — Stretch seam edges

Lay back trouser pieces right sides facing. Stretch inside leg edges with a steam iron or press under a damp cloth until the edges match corresponding edge on front trouser piece.

Step 5 — Back darts

Stitch back darts and press toward centre.

Step 6 — Side Seams

Stitch side seams, not stitching across pocket openings. Press seam allowances open.

Step 7 — In-seam pockets

Pin pocket pieces right sides together with seam allowances of pocket opening edges — large pocket pieces in front and small pocket pieces in back. Stitch pocket pieces close to side seam and at -pocket opening, along seam line. Press pocket pieces forward and -stitch together. Baste pocket pieces to wrong side of trouser fronts.

Step 8 — Inside leg seams

Stitch inside leg seams. Stitch centre front seam from slit mark to inside leg seam.

Step 9 — Zip opening

Stitch right facing piece right sides together with right edge of opening. Turn facing to inside and press edge. Press allowance on left edge of opening (underlap) to inside, 5 mm (3/16 in) before centre front, and understitch zip close to teeth of zip. Pin opening closed matching centres. Stitch loose zip tape to right facing, not catching trouser piece. Baste facing in place. Topstitch opening from upper edge to 3 cm (1 1/4 ins) before the end, as marked. Fold underlap piece lengthwise. Stitch across bottom end. Turn right side out. Lay underlap under left edge of opening and pin to allowance of opening edge. Stitch allowance of opening edge to underlap, close to zip joining seam. Close zip. Topstitch to end of opening, catching underlap.

Step 10 — Stitching centre back seam

Stitch centre back seam. Press seam allowances open from upper edge to beginning of curve. Do not press seam allowances flat along the curve.

Step 11 — Belt carriers

Neaten lengthwise edges of strip for belt carriers and press to inside, 8 mm (1/4 in) wide. Topstitch close to edges. Cut strip into 5 equal pieces. Baste belt carriers to upper edge of trousers, placing one over each pleat in front, and one next to each dart and over centre back seam in back.

Step 12 — Waistband

Stitch side seams and centre back seam of waistband pieces. Stitch outer waistband to upper edge of trousers. Leave right end of waistband extending from centre front and stitch left end of waistband to underlap. Press seam allowances of joining seam onto waistband. Press allowance on lower edge of inside waistband to inside. Pin inside waistband right sides together with attached outer waistband. Stitch across front ends of waistband (on the right along centre front) and along upper edge of waistband. Trim seam allowances. Turn

waistband right side out. Baste inside edge of waistband in place. Topstitch waistband close to edge. Lay belt carriers up, turn ends in and stitch to upper edge of waistband. Work a buttonhole in right front end of waistband.

Step 13 — Hems

Press hems under, turn in to a width of 1.5 cm (5/8 in), and stitch.

Step 14 — Tie-Belt

Fold tie belt lengthwise, right side facing in. Stitch edges together, leaving a section of seam open for turning. Turn belt right side out. Sew opening closed.

BurdaStyle

5/2010 Belted Bermuda Shorts