

5/2010 Belted Military Jacket

By: burda style magazine

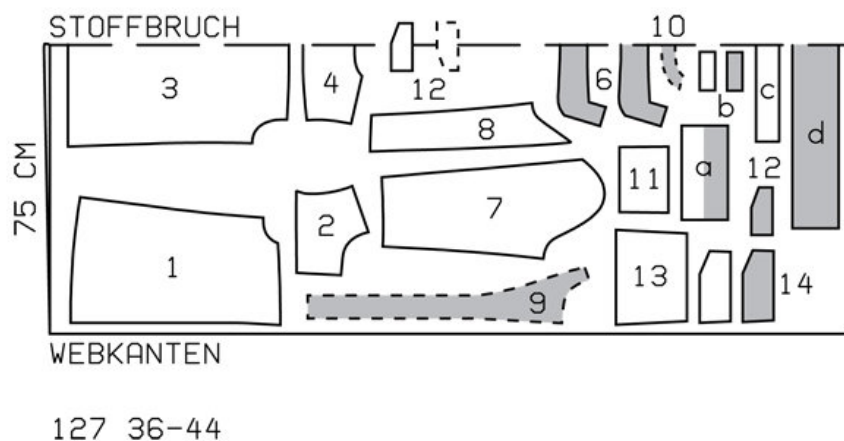
<http://www.burdastyle.com/projects/52010-belted-military-jacket>

Belted Military Jacket burda style magazine patterns FAQ

Materials

Poplin

Step 1 — Preparation



Trace the pattern pieces from the pattern sheet. Follow lines and details for style 127.

Seam and hem allowances:

Seams and edges 1.5 cm (5/8 in), upper edges of pockets 3 cm (1 1/4 ins), edges of sleeve vents 2 cm (3/4 in), hem 4 cm (1 5/8 ins).

Step 2 — Cutting Out



1— front 2x

2— front yoke 2x

3— back, on a fold 1x

4— back yoke, on a fold 1x

6— collar, on a fold 2x

7— front sleeve 2x

8— back sleeve 2x

9— front facing 2x

10— back facing, on a fold 1x

11— upper pocket 2x

12— upper flap 4x

13— lower pocket 2x

14— lower flap 4x

a) 2 cuffs, 24 — 24.5 — 25 — 25.5 — 26 cm (9 1/2 — 9 3/4 — 10 — 10 1/8 — 10 1/4 ins) long, 12 cm (4 3/4 ins) wide, finished width 6 cm (2 3/8 ins),

b) 4 tab pieces (shoulder), 10 — 10 — 10 — 10.5 — 10.5 cm (4 — 4 — 4 — 4 1/8 — 4 1/8 ins) long, 4 cm (1 5/8 ins) wide,

c) 5 belt carriers, a total of 50 cm (20 ins) long, 6 cm (2 3/8 ins) wide (incl. allowance),

d) belt, 91 — 95 — 99 — 103 — 107 cm (36 — 37 1/2 — 39 — 40 3/4 — 42 1/4 ins) long, 12 cm (4 3/4 ins) wide, finished width 6 cm (2 3/8 ins).

Interfacing: See pattern layout.

Step 3 — Front darts

Stitch front darts. Trim dart allowances to 7 mm (1/4 in) wide, neaten and press to centre.

Step 4 — Upper pockets

Fold pleats in -arrow direction and press. Baste pleats to upper and lower edges of pockets. Press allowances on upper edges of pockets to inside and stitch 1.5 cm (5/8 in) from fold edge. Press allowances on side and lower edges to inside. -Stitch pockets to fronts at placement lines, stitch-ing close to edges and again 7 mm (1/4 in) from edges.

Step 5 — Upper flaps

Stitch each interfaced flap piece to flap piece with no interfacing, right sides together, along outer edges. Turn right side out. Topstitch flaps. Baste flaps to upper edge of fronts, between markings.

Step 6 — Yokes

Stitch front yokes to fronts and back yoke to back. Topstitch yokes close to joining seams and again 7 mm (1/4 in) from seams.

Step 7 — Side seams and shoulder seams

Stitch side seams and shoulder seams. Neaten seam allowances -together and press onto back. Stitch facing seams. Press seam allowances open. Trim allowance on inside edge of facing to 5 mm (3/16 in) wide, neaten, press to inside, and stitch.

Step 8 — Notched collar and front edges

Pin facing right sides together with jacket. Build a little extra fullness into corners of lapels. Stitch facings to front edges and edges of lapels, to marking. Leave facing lying right sides together with jacket for now. Stitch collar pieces right sides together along outer edges, beginning and ending at marking (seam number 4). Trim seam allowances, trimming corners diagonally. Clip into corners. Turn collar right side out and press. Work one buttonhole for smaller buttons in each end of collar. Lay collar between jacket and facing. Stitch undercollar to neck edge of jacket and top collar to facing. Press seam allowances of collar joining seams open. Turn facing to inside. Pin collar joining seams together exactly. Lay back facing up and stitch seam allow-ances together, close to collar joining seam. Lay facing down.

Step 9 — Facings and hem

Unfold facings at hem. Press hem allowance to inside and sew in place by hand. Lay facings to inside again and sew to hem allowance.

Step 10 — Lapels, collar and yoke joining seam

Topstitch close to front edges and edges of lapels and collar. Also topstitch 7 mm (1/4 in) from outer edges of collar. Topstitch 4.5 cm (17/8 ins) from right front edge, from yoke joining seam.

Step 11 — Lower pockets

Construct lower pockets with flaps as for upper pockets with flaps. Stitch pockets to fronts at placement lines. Stitch flaps in place, 2 cm (3/4 in) above pockets, press down and stitch again next to joining seams.

Step 12 — Shoulder tabs

Lay each interfaced tab piece on tab piece with no interfacing, right sides together. Stitch along lengthwise edges and across one end of each. Turn shoulder tabs right side out. Topstitch edges. Work a buttonhole (for smaller button) in faced end of each tab. Lay tabs on shoulder seams and baste to edges of armholes.

Step 13 — Sleeves

Stitch back sleeve seams as far as vent mark. Press seam allowances forward and press allowances on edges of vent to inside. Taper seam allowances at back edges of sleeve, above vent, as you press them forward (do not cut). Turn in allowances at edges of vent and baste. Topstitch front sleeves next to seams and edges of vent. Topstitch back edges of vent. Stitch underneath sleeve seams. Fold pleat in lower edges of sleeves and baste.

Step 14 — Cuffs

Stitch cuffs to lower edges of sleeves. Press seam allowances of joining seam and of other long edge of cuffs onto cuffs. Fold cuffs lengthwise, right side facing in, and stitch across ends. Turn right side out. Baste inside edges in place. Topstitch cuffs close to joining seam. Topstitch close to outer edges of cuffs and again 7 mm (1/4 in) wide.

Step 15 — Sleeve caps and shoulder pads

Set in sleeves, easing sleeve caps. Sew shoulder pads in place. Sew inside edge of facing to shoulder pads.

Step 16 — Belt carriers

Fold strip for belt carriers length-wise, right side facing in. Stitch 2 cm (3/4 in) from fold edge. Turn right side out. Topstitch close to edge and again 5 mm (3/16 in) from edge. Cut strip into 5 pieces. Turn ends in for a finished length of 6.5 cm (25/8 in) each. Pin belt carriers to jacket, above waist (about 30 cm (12 ins) above hem edge), placing them next to darts in front, and 2 cm (3/4 in) from side -seams and at centre back in back. Edgestitch ends of belt carriers in place.

Step 17 — Belt

Fold belt lengthwise, right side facing in. Trim one end at a slant. -Stitch along lengthwise edge and slanted end. Turn right side out. Top-stitch belt. Cut 2 small holes for prongs of buckles, 3 cm (1 1/4 ins) from open end of belt, and neaten with buttonhole stitching. Lay end of belt around bar of buckle, turn in, and sew in place. Insert 2 eyelets, 12 cm (4 3/4 ins) from slanted end of belt, to match prongs of buckle. Insert re-maining eyelets, spaced 3 cm (1 1/4 ins) apart.

Step 18 — Buttonholes

Work buttonholes for large buttons in right front. Work one buttonhole in front end of each cuff. Turn ends of collar back onto top collar at corner and sew in place with buttons, to match buttonholes.

BurdaStyle

5/2010 Belted Military Jacket