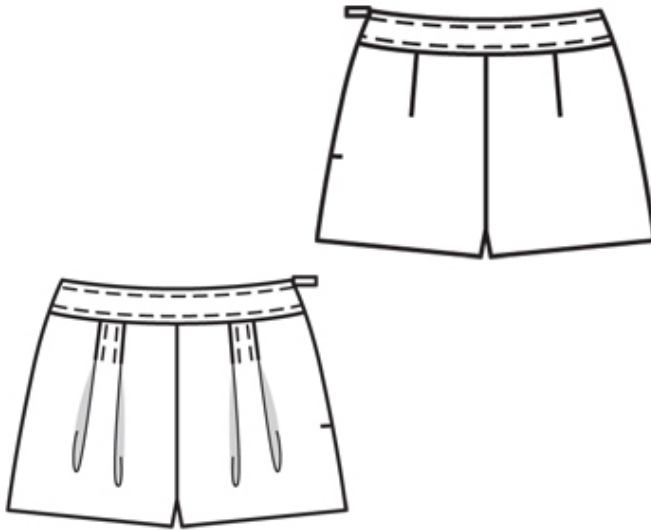


5/2010 Shorts with wide waistband

By: burda style magazine

<http://www.burdastyle.com/projects/52010-shorts-with-wide-waistb>

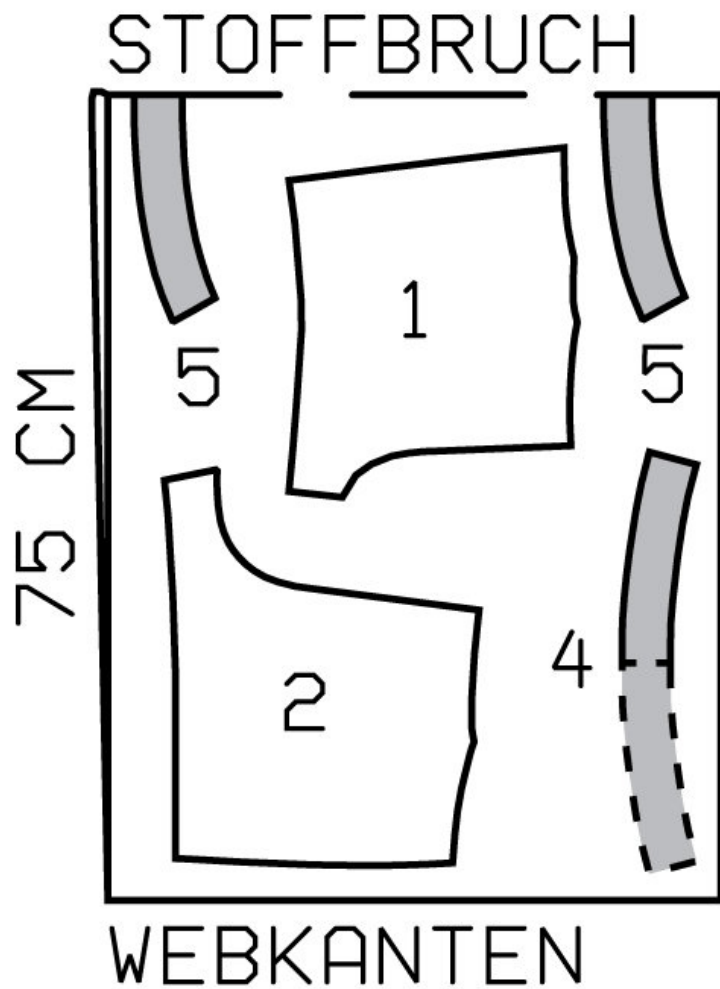


Shorts with wide waistband burda style magazine patterns FAQ

Materials

Jacquard

Step 1 — Preparation



136 36-44

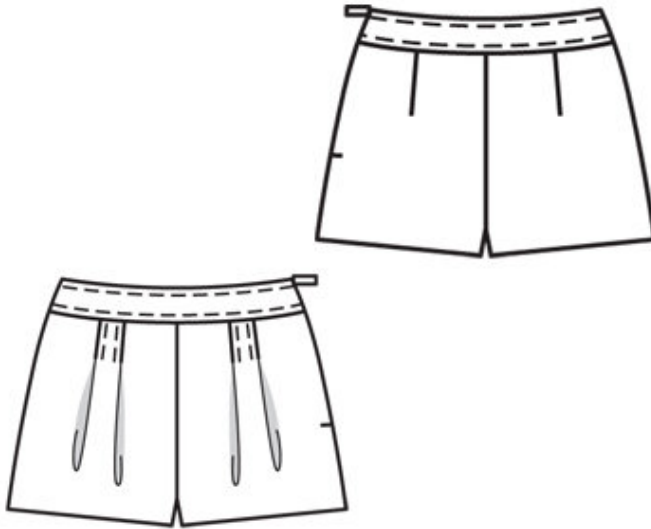
Trace the pattern pieces from the pattern sheet. Follow lines and details for style 136.

The pleat arrows on piece 1 are mark-ed for size 36. Mark pleat arrows for the other sizes according to the size lines.

Seam and hem allowances:

Seams and edges 1.5 cm (5/8 in), hem 3 cm (11/4 ins).

Step 2 — Cutting Out



1 front trouser piece 2x
2 back trouser piece 2x
4 front waistband, on a fold 2x
5 back waistband, on a fold 2x
Interfacing: See pattern layout.

Step 3 — Stitching pleats to front trouser pieces

Work from inside to stitch pleats in front trouser pieces, from upper edge to arrow. Lay pleats in arrow direction and press. Baste to upper edge. Topstitch 5 mm (3/16 in) from pleat seams and stitch diagonally toward bottom end of seam.

Step 4 — Back darts

Stitch back darts and press to centre.

Step 5 — Stitching front and centre seams

Stitch front and back centre seam from upper edges, about 15 cm (6 ins) long. Press seams open. Stitch one front and back waistband piece each to respective upper edge of trousers. Press seam allowances toward waistband.

Step 6 — Zipper

Sew invisible zip to left trouser -pieces and waistband. Stitch left side seam as far as zip. Stitch right side seam on shorts and inner waistband unit.

Step 7 — Waistband

Lay inner waistband right sides together with attached outer waistband. Pin upper edges together. At zip opening, turn ends of inside waistband back, 5 mm (3/16 in) before edge, and pin to upper edge. Lay allowances on opening edges of outer waistband piece outward and pin to upper edge, over inside waistband. Stitch along upper edge. Turn allowances at opening edges and turn inside waistband to inside. Lay inside edge of waistband flat over joining seam without turning in and baste. Sew inside waistband piece to zip tapes. Work from right side of garment to stitch in line of joining seam, catching inside edge of waistband. Topstitch waistband 5 mm (3/16 in) from joining seam and upper edge.

Step 8 — Inside leg seams

Stitch inside leg seams. Pull one trouser leg over the other, right sides facing. Stitch remaining front and back centre seam as continuous seam.

Step 9 — Hem

Press hem allowances to inside and sew in place by hand.

BurdaStyle

5/2010 Shorts with wide waistband