

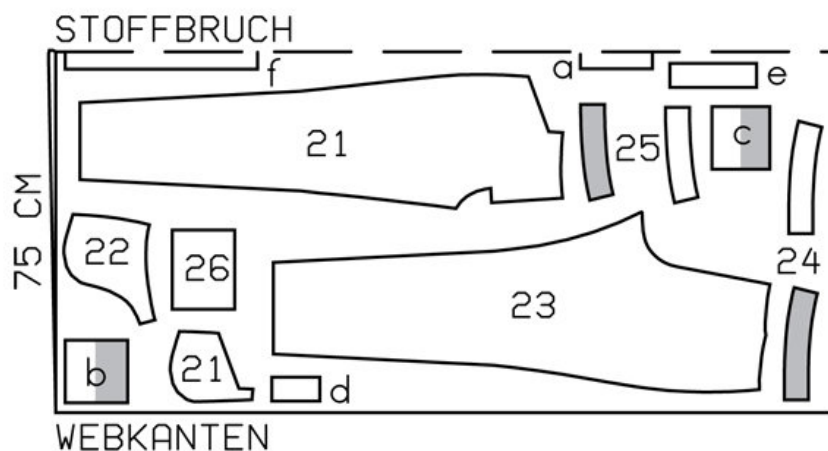
05/2010 Cargo Pants

By: burda style magazine

<http://www.burdastyle.com/projects/052010-cargo-pants>

Cargo Pants burda style magazine patterns FAQ

Step 1 — Preparation



131 36-44

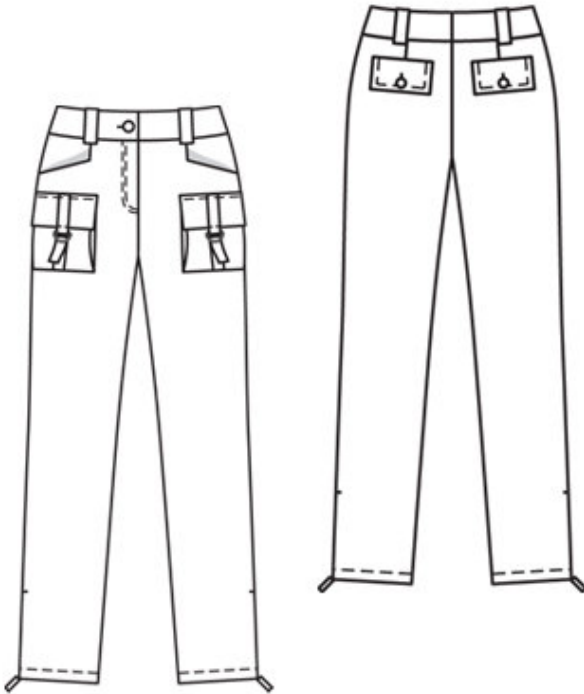
Trace the pattern pieces from the pattern sheet. Lengthen piece 23 as indicated. Trace the pocket piece from piece 21 as a separate pattern piece.

The stitching line at the zip fly opening is marked for size 36. For sizes 38 — 44, mark the stitching line the same distance from centre front as for size 36, noting length of opening.

Seam and hem allowances:

Seams and edges 1.5 cm (5/8 in), upper edges of pockets 3 cm (1 1/4 ins), hem 4 cm (1 5/8 ins).

Step 2 — Cutting out



21 front trouser piece 2x

22 side hip yoke with

23 back trouser piece 2x

24 front waistband 4x

25 back waistband 4x

26 pocket 2x

a) left underlap piece, 15 cm (6 in) long, 6 cm (2 1/2 ins) wide, finished width 3 cm (1 1/4 ins),

b) 2 front flaps, 13 cm (5 1/4 ins) long, 13 cm (5 1/4 ins) wide, finished width 6.5 cm (2 3/4 ins),

c) 2 back flaps, 12 cm (4 3/4 ins) long, 13 cm (5 1/4 ins) wide, finished width 6.5 cm (2 3/4 ins),

d) 2 loops (front flaps), 8.5 cm (3 3/8 ins) long, 5 cm (2 ins) wide, finished width 2.5 cm (1 in),

e) 2 tabs (pockets), 18 cm (7 ins) long, 5 cm (2 ins) wide, finished width 2.5 cm (1 in),

f) 4 belt carriers, a total of 40 cm (16 ins) long, 7 cm (2 7/8 ins) wide (incl. allowance).

Interfacing: See pattern layout. Iron interfacing onto outer waistband.

Step 3 — Patch pockets with tabs

Fold tabs in half lengthwise. Stitch lengthwise edge and across one end each. Turn tabs right side out and topstitch close to edges. Lay tabs on pockets, from lower edge of pockets, as marked. Leave upper end extending. Baste lower end in place. Working from below, stitch tabs in lines of previous stitching and stitch across tabs at markings. Press allowances on upper edges of pockets to inside, turn under and stitch. Lay

allowances on lower and side edges of pockets to inside and press. Fold pleats in side edges of pockets in arrow direction and press. Pin pockets to front trouser pieces at placement lines. Now first edgestitch side edges of pockets in place, not catching pleats. Then stitch lower edges of pockets in place, catching pleats. Stitch pleats to top corners of pockets.

Step 4 — Front flaps with loop

Fold flaps lengthwise, right side facing in. -Stitch across ends. Turn right side out. Top-stitch flaps close to edges and 7 mm (1/4 in) from edges. Fold loops in half lengthwise, right side facing in. Stitch lengthwise edges together. Turn loops right side out. Topstitch close to edges. Fold one end of each loop piece over two D-rings, 2 cm (3/4 in) wide, and pin. Lay loops centred on flaps so that ends with D-rings extend 1 cm (3/8 in) wide. Working from above, stitch loops in lines of previous stitching and stitch across loops at lower edge of flap. Stitch flaps in place, 1 cm (3/8 in) above pockets, press down, and stitch again along joining seams.

Step 5 — Hip Yoke Pockets

Stitch pocket pieces right sides together with pocket opening edges of front trouser pieces. Clip allowances into corners. Turn pocket pieces to inside. Top-stitch close to pocket opening edges. Pin pocket opening edges to side hip yokes at placement lines. Stitch pocket pieces together on inside. Baste pocket pieces to wrong side of front trouser pieces. First trim away allowance of right pocket piece along centre front.

Step 6 — Back Darts

Stitch back darts and press toward centre.

Step 7 — Back Flaps

Construct back flaps as for front flaps, omitting loop. Work buttonhole centred in each flap — spaced 1.5 cm (5/8 in) from lower edge. Stitch flaps to joining lines and press down. Stitch again close to joining -seam.

Step 8 — Side Seams

Stitch side seams to about 10 cm (4 ins) above slit mark. Stitch inside leg seams. Stitch centre front seam from slit mark to inside leg seam.

Step 9 — Zip opening

Press self-facings to inside. Stitch on the right along centre front and on the left 5 mm (3/16 in) before centre front. Understitch zip to left edge of opening (underlap), stitching close to teeth of zip. Pin opening closed, matching centres. -Stitch loose zip tape to right facing stitch, not catching trouser piece. Pin facing in place. Topstitch opening from upper edges to 3 cm (1 1/4 ins) before end, as marked, and again 7 mm (1/4 in) from this line of stitching. Fold underlap piece lengthwise and stitch across bottom end. Turn right side out. Lay underlap under left edge of opening and pin to facing. Stitch facing to underlap, close to zip joining seam. Lay opening closed again and topstitch to the end, catching underlap.

Step 10 — Back Seam

Stitch centre back seam. Press seam allowances open from upper edge to beginning of curve. Do not press seam allowances flat along -curve.

Step 11 — Belt Carriers

Fold strip for belt carriers lengthwise, right side facing in. Stitch 2.5 cm (1 in) from fold edge. Turn right side out. Topstitch close to edges and cut into 4 pieces. Baste belt carriers to upper edge of trousers, placing one over each pocket opening in front and next to each dart in front.

Step 12 — Waistband

Stitch side seams and centre back seam of waistband pieces. Stitch outer waistband to upper edge of trousers. Leave right end of waistband extending from centre front and stitch left end of waistband to underlap. Press seam allowances of joining seam onto waistband. Press allowance on lower edge of inside waistband to inside. Pin inside waistband right sides together with attached outer waistband. Stitch across front ends of waistband (on the right along centre front) and along upper edge of waistband. Trim seam allowances. Turn waistband right side out. Baste inside edge of waistband in place. Topstitch waistband close to edge. Lay belt carriers up, turn ends in and stitch to upper edge of waistband. Work a buttonhole in right front end of waistband.

Step 13 — Invisible zips

Sew invisible zips to side slit edges, from hem line to slit mark. The zips should open from bottom to top. Stitch remainder of side seams.

Step 14 — Hem allowance

Press hem allowances to inside, turn under to a width of 2.5 cm (1 in), and stitch.

BurdaStyle

05/2010 Cargo Pants