

5/2010 Vest with pockets

By: burda style magazine

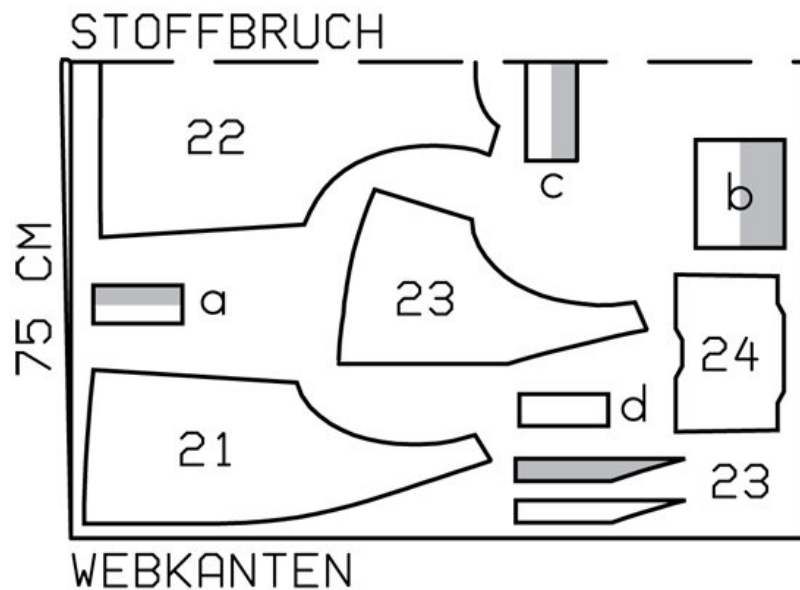
<http://www.burdastyle.com/projects/52010-vest-with-pockets>

Vest with pockets burda style magazine patterns FAQ

Materials

Metallic linen and cotton poplin

Step 1 — Preparation



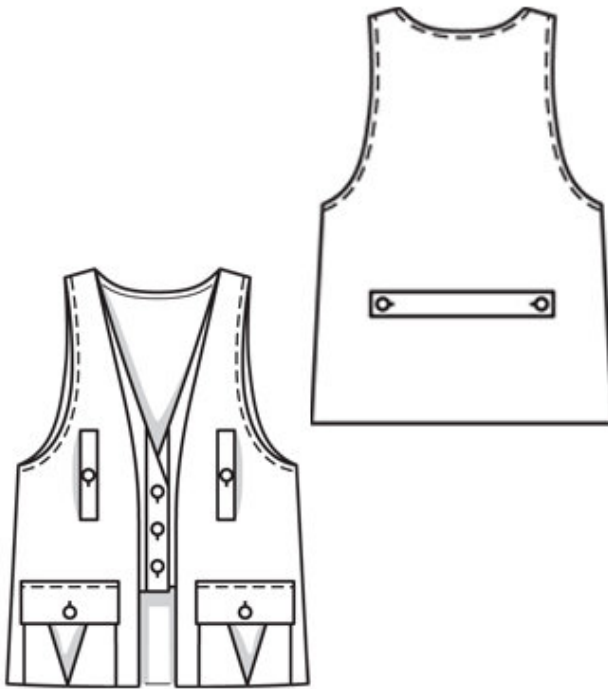
124 34-42
METALLIC-LEINEN

Trace the pattern pieces from the pattern sheet. . Cut piece 23 apart on the marked seam line = inside front and front band.

Seam and hem allowances:

Seams and edges 1.5 cm (5/8 in), upper pocket edge 3 cm (1 1/4 ins), hem on back 4 cm (1 5/8 ins).

Step 2 — Cutting Out



Linen:

21front 2x

22back, on a fold 1x

23inside front 2x

23front band 4x

24pocket 2x

a) 2 welts, 14 cm (5¹/₂ ins) long, 6 cm (2¹/₂ ins) wide, finished width 3 cm (1¹/₄ ins),

b) 2 flaps, 17 cm (6³/₄ ins) long, 14 cm (5¹/₂ ins) wide, finished width 7 cm (2³/₄ ins),

c) back half-belt, 31 cm (12¹/₄ ins) long, 8 cm (3¹/₄ ins) wide, finished width 4 cm (1⁵/₈ ins),

d) 2 pocket pieces, 8 cm (3¹/₄ ins) -wide, 17 cm (6³/₄ ins) long (incl. allowance).

Poplin (lining):

21front 2x

23inside front 2x

d) 2 pocket pieces, 8 cm (3¹/₄ ins) -wide, 17 cm (6³/₄ ins) long (incl. allowance),

e) bias strip for back neck edge, 27 cm (10³/₄ ins) long, 4 cm (1⁵/₈ ins) wide (incl. allowance),

f) 2 bias strips for armholes, 67 — 69 — 70 — 72 — 73 cm (26¹/₂ — 27¹/₄ — 27³/₄ — 28¹/₂ — 28³/₄ ins) long, 4 cm (1⁵/₈ ins) wide (incl. allowance).

Interfacing: See pattern layout.

Step 3 — Construct welt pockets on fronts

Fold welts lengthwise with right side facing in. Stitch across ends. Turn welts right side out. Work a buttonhole, centred, in each welt. Stitch welts right sides together with fronts along marked joining lines so that welts point toward centre front. Lay fabric pocket pieces on fronts, opposite welts, and stitch 1.5 cm (5/8 in) from welt joining seams. These seams should be about 5 mm (3/16 in) shorter at the ends than the welt joining seams. Slash between lines of stitching and clip diagonally toward each last stitch. Do not cut into pocket pieces. Pull pocket pieces to inside and press welts over pocket opening edges. Work from inside to stitch pocket lining pieces to seam allowances of welt joining seams. Fold small fabric triangles at pocket opening ends to inside and sew to pocket pieces. Trim pocket pieces even and stitch together. Edgestitch narrow edges of welts in place.

Step 4 — Fronts of outer fabric and lining

Lay fronts of outer fabric and lining right sides together. Stitch along edge of hem, front edge and neck edge. Turn fronts right side out and press faced edges. Baste open edges together.

Step 5 — Patch pockets

Fold pleats in arrow direction and press. Baste pleats to upper and lower edges of pocket. Press allowances on upper edges of pockets to inside, turn in and stitch. Press allowances on side and lower edges to inside. Edgestitch pockets to fronts, at placement lines.

Step 6 — Flaps

Fold flaps lengthwise, right side facing in, and stitch across ends. Turn right side out. Topstitch edges. Work a buttonhole, centred, in each flap, 2 cm (3/4 in) above lower edge of flap. Stitch flaps in place, 1 cm (3/8 in) above pockets. Press flaps down and stitch again next to joining seams.

Step 7 — Darts

Stitch darts in inside fronts and in lining pieces. Trim dart allowances to 1 cm (3/8 in) wide and press open, pressing points of darts flat.

Step 8 — Front bands

Stitch interfaced front bands to inside fronts and stitch front bands with no interfacing to inside front lining pieces. Press seam allowances onto fronts.

Step 9 — Stitching inside fronts and front bands

Lay inside fronts of outer fabric and lining right sides facing, laying front bands together. Stitch along edge of hem, front edge and neck edge. Turn pieces right side out and press edges. Pin band joining seams together exactly. Reach between outer fabric and lining, grasp band joining seams and pull them out. Stitch seam allowances together, close to band joining seams, stitching as far as possible at the top and bottom. Push band joining seams in again. Baste open front edges together. Lay inside fronts under fronts and baste to side seam edges, edges of armholes and shoulder seams.

Step 10 — Shoulder seams

Stitch shoulder seams — allowance of back extends at neck edge. Trim seam allowances to 7 mm (1/4 in) wide, neaten together and press onto back.

Step 11 — Back neck edge

Fold bias strip for back neck edge lengthwise and press, right side facing out. Pin doubled bias strip to neck edge so that fold edge of strip lies on garment piece, 1 cm (3/8 in) past seam line. Stitch along neck edge. Trim seam allowances. Lay bias strip up and turn ends in. Lay -bias strip to inside and press edge. Topstitch 7 mm (1/4 in) from neck edge.

Step 12 — Armholes and bias strips

Face armholes with doubled bias strips as for neck edge. Do not turn in ends of bias strips.

Step 13 — Side seams

Stitch side seams — hem allowance of back extends. Neaten seam allowances together and press onto back. Sew top ends of seam allowances in place. Press hem allowance on back to inside and sew in place by hand.

Step 14 — Back half-belt

Fold back half-belt lengthwise, right side facing in. Stitch along lengthwise edge and across ends, leaving a section of seam open for turn-ing. Turn half-belt right side out. Sew opening closed. Work one buttonhole 1.5 cm (5/8 in) from each end of half-belt. Pin half-belt to back at placement lines. Sew buttons to back to match buttonholes. Button half-belt in place.

Step 15 — Buttonholes

Work buttonholes in right front band.

BurdaStyle

5/2010 Vest with pockets