

05/2010 Short-sleeve Waistcoat

By: burda style magazine

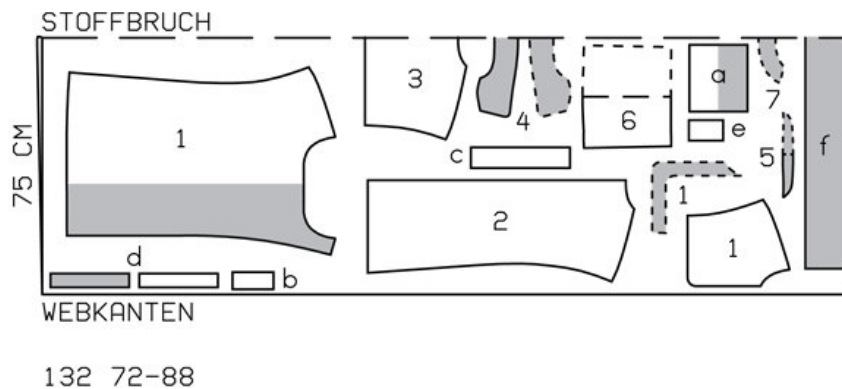
<http://www.burdastyle.com/projects/052010-short-sleeve-waistcoat>

Short-sleeve Waistcoat burda style magazine patterns FAQ

Materials

cotton gabardine

Step 1 — Preparation



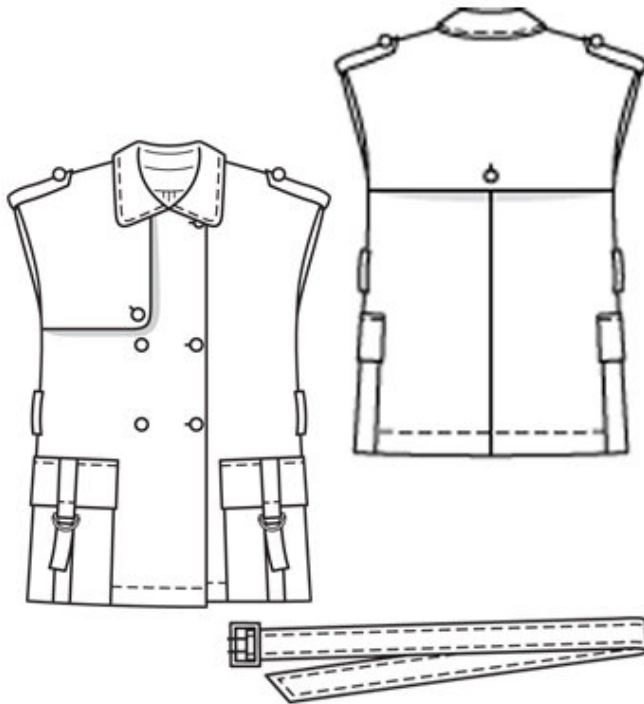
Trace the pattern pieces from the pattern sheet. Trace the front yoke and yoke facing from piece 1 as separate pattern pieces.

The top buttonhole on piece 1 is marked for size 72. For sizes 76 — 88, mark the top buttonhole the same distance from neck edge as for size 72.

Seam and hem allowances:

Seams and edges 1.5 cm (5/8 in), armhole edges (front, back, yokes) 3 cm (1 1/4 ins), lower edge of back yoke 6 cm (2 3/8 ins), upper edges of pockets 3 cm (1 1/4 ins), hem 5 cm (2 ins).

Step 2 — Cutting out



1 front 2x

â— right front yoke 1x

â— facing 1x

2 back 2x

3 back yoke, on a fold 1x

4 collar, on a fold 2x

5 collar band, on a fold 2x

6 pocket, on a fold 2x

7 back facing, on a fold 1x

a) 2 flaps, 19.5 cm (7³/₄ ins) long, 17 cm (6³/₄ ins) wide, finished width 8.5 cm (3³/₈ ins),

b) 2 loops (flaps), 12 cm (4³/₄ ins) long, 6 cm (2¹/₂ ins) wide, finished width 3 cm (1¹/₄ ins),

c) 2 tabs (pockets), 29 cm (11¹/₂ ins) long, 6 cm (2¹/₂ ins) wide, finished width 3 cm (1¹/₄ ins),

d) 4 tab pieces (shoulder), 23 cm (9¹/₈ ins) long, 4 cm (1⁵/₈ ins) wide,

e) 2 belt carriers, 10 cm (4 ins) long, 6 cm (2³/₈ ins) wide (incl. allowance),

f) belt, 130 â— 135 â— 140 â— 145 â— 145 cm (51¹/₄ â— 53¹/₄ â— 55¹/₄ â— 57 â— 57 ins)
long, 12 cm (4³/₄ ins) wide, finished width 6 cm (2³/₈ ins).

Interfacing: See pattern layout. Also interface hem allowance.

Step 3 — Center back seam

Stitch centre back seam.

Step 4 — Yoke

Press allowance on lower edge of back yoke to inside and sew in place by hand. Work buttonhole. Lay yoke on back. Baste edges in place. Pin -facing right sides together with right front yoke. Stitch along front and lower edges. Trim -seam allowances. Turn facing to inside and baste. Press edges. Work buttonhole. Lay yoke on right front. Baste yoke to neck edge, shoulder edge and armhole.

Step 5 — Shoulder Seams

Stitch shoulder seams. Stitch side seams below marking at seam number 4. Press seam allowances open. Press allowances on edges of arm-holes to inside. Sew allowances on edges of arm-holes in place by hand.

Step 6 — Facings

Lay front self-facings outward and -stitch to back facing. Stitch facing to neck edge, from each front edge (fold) to centre front. Leave facing -lying right sides together with waistcoat for now.

Step 7 — Collar

Stitch collar band pieces right sides together with respective collar pieces. Trim seam allowances and press open. Topstitch close to each side of seams. Stitch collar pieces right sides together along outer edges, building a little extra fullness into top collar. Begin and end stitching at narrow edges, exactly on seam line of joining edge. Turn collar right side out. Lay collar between waistcoat and facing. Stitch undercollar to neck edge of waistcoat and stitch top collar to facing. Press seam allowances open. Turn facing to inside. Press front edges. Pin collar joining seams together. Lay back facing up again and stitch seam allowances together, close to collar joining seam.

Step 8 — Hem

Unfold facings at hem. Press hem allowance to inside and stitch 4 cm (1 5/8 ins) wide. Lay facings to inside again and sew to hem allowance and at shoulder seams.

Step 9 — Topstitch

Topstitch 1 cm (3/8 in) from front and neck edges, as far as collar joining seam. Topstitch edges of collar.

Step 10 — Patch pockets with tabs

Fold tabs in half lengthwise. Stitch lengthwise edge and across one end each. Turn tabs right side out and topstitch close to edges. Lay tabs on pockets, from lower edge of pockets, as marked. Leave upper end extending. Baste lower end in place. Working from below, stitch tabs in lines of previous stitching and stitch across tabs at markings. Press allowances on upper edges of pockets to inside, turn under and stitch. Lay allowances on lower and side edges of pockets to inside and press. Fold pleats in side edges of pockets in arrow direction and press. Pin pockets to front trouser pieces at placement lines. Now first edgestitch side edges of pockets in place, not catching pleats. Then stitch lower edges of pockets in place, catching pleats. Stitch pleats to top corners of pockets.

Step 11 — Flaps with loops

Fold flaps length-wise, right side facing in. Stitch across ends. Turn right side out. Topstitch close to edges. Fold loops lengthwise, right side facing in. Stitch along lengthwise edges. Turn right side out. Topstitch loops close to edges. Fold one end of each loop over 2 D-rings, 4 cm (15/8 ins) each wide, and pin. Lay loops centred on flaps so that ends with D-rings extend by 1.5 cm (5/8 in). Working from the top, stitch loops close to edge, in line of previous stitching, and stitch across loops 1 cm (3/8 in) above lower edge of flap. Stitch flaps in place, 1 cm (3/8 in) above pockets. Press flaps down and stitch again 5 mm (3/16 in) from joining seam.

Step 12 — Shoulder tabs

Lay each interfaced tab piece on tab piece with no interfacing, right sides together. Trim one end to a point. Stitch along lengthwise edges and pointed end. Turn right side out. Top-stitch tabs close to edges-. Work a buttonhole in pointed end of each tab. Lay tabs on shoulder seams, from inside, with pointed end extending at armhole, 12 cm (43/4 ins) long. Stitch straight ends of tabs in place. Fold pointed ends out over edges of armholes and lay on -shoulder seams. Sew in place with a button to match buttonhole.

Step 13 — Belt

Fold belt lengthwise, right side facing in. Trim one end at a slant. Stitch along lengthwise edge and slanted end. Turn right side out. Topstitch belt. Cut 2 small holes for prongs of buckles, 3 cm (11/4 ins) from open end of belt, and neaten with buttonhole stitching. Lay end of belt around bar of buckle, turn in, and sew in place. Topstitch 1 cm (3/8 in) from edges of belt.

Step 14 — Belt Carriers

Fold belt carriers lengthwise, right side facing in. Stitch 1 cm (3/8 in) from fold edge. Turn right side out. Top-stitch belt carriers close to edges. Turn ends in finished length 7 cm (3 ins). Stitch belt carriers in place, over side seams, at waist level.

Step 15 — Buttonholes

Work buttonholes in right front. Work centre buttonhole in left front, for inside button.

BurdaStyle

05/2010 Short-sleeve Waistcoat