

5/2010 Ruched-front dress

By: burda style magazine

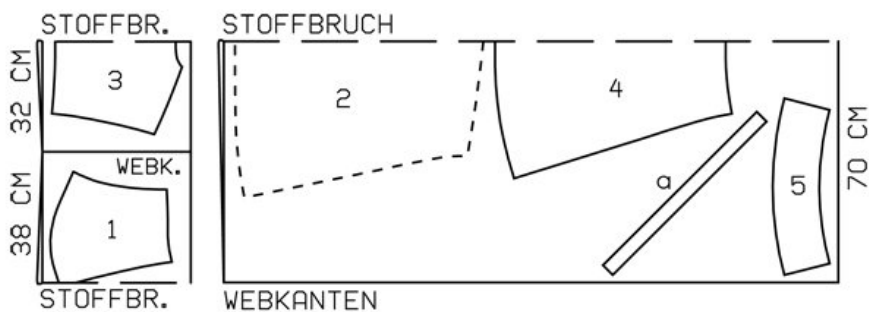
<http://www.burdastyle.com/projects/52010-ruched-front-dress>

Ruched-front dress burda style magazine patterns FAQ

Materials

Seersucker

Step 1 — Preparation



103 38-46

Trace the pattern pieces from the pattern sheet. Follow lines and details for style 103. Mark line for middle row of smocking to side limits on piece 1.

Seam and hem allowances:

Seams, edges and hem 1.5 cm (5/8 in), pieces 3 and 4 for size 46 only 1 cm (3/8 in).

Step 2 — Cutting Out



Seersucker:

1 upper front, on a fold 1x

2 lower front, on a fold 1x

3 upper back, on a fold 1x

4 lower back, on a fold 1x

5 sleeve 2x

a) 2 tie bands, cut on bias, 65 cm (25³/₄ ins) long, 4 cm (1⁵/₈ ins) wide (incl. allowance).

Batiste (lining): pieces 1 to 4.

Vilene Bias Tape: Iron onto neck edges of lining pieces.

Step 3 — Shirring

Stitch shirring on upper and lower front: Lay elastic flat along marked lines for shirring (wrong fabric side). Stitch over elastic at a zigzag setting. The stitch setting should be just wide enough to not catch the elastic, so it can be pulled to shirr the fabric. On uppermost and second shirring lines on the lower front, begin and end at seam line on joining edge. Stitch upper front to lower front, not catching extending ends of elastic. Zigzag-stitch another piece of elastic directly next to seam, beginning and ending at side ends of shirring lines. Pull shirring elastic to gather fabric to a width of 15 cm (6 ins). Knot ends of elastic or darn into fabric to conceal.

Step 4 — Back

Stitch upper back to lower back.

Step 5 — Tie bands

Fold tie bands lengthwise, right side facing in. Stitch 1 cm (3/8 in) from fold edge. Trim seam allowances. Turn bands right side out and press. Baste tie bands to side seam edges of backs, below horizontal seam.

Step 6 — Shoulder seams

Stitch shoulder seams.

Step 7 — Sleeves

Stitch sleeves to edges of arm holes, beginning and ending exactly at marked sleeve seam lines. Turn seam allowances of sleeves back at ends of seams and pin. Stitch side -seams below marking at seam number 4. Stitch sleeve seams, not catch-ing side seam allowances. Press allowances of side seams and sleeve seams open. Press seam allowances of -sleeve joining seams away from sleeves.

Step 8 — Stitching hem and sleeve hem allowances

Press hem and sleeve hem allowances to inside, turn in and stitch.

Step 9 — Sew lining

Stitch shirring and front horizontal seam on lining as instructed for outer fabric. Stitch back to back skirt panel. Stitch shoulder seams. Stitch side seams below mark-ing. Press allowance at edges of armholes to inside and stitch in place.

Step 10 — Neck edge

Place lining over dress, with wrong side facing right side, and pin to neck edge. Stitch along neck edge. Trim seam allowances and clip into point of neck edge. Lay lining up and stitch to seam allowances, close to -seam. Turn lining to inside. Press neck edge. Sew edges of armholes to lining at shoulder seams and sleeve attachment -seams, with a few stitches, by hand.

BurdaStyle

5/2010 Ruched-front dress