

# 5/2010 Empire-waisted, bubble hem dress

By: burda style magazine

<http://www.burdastyle.com/projects/52010-empire-waisted-bubble->

---

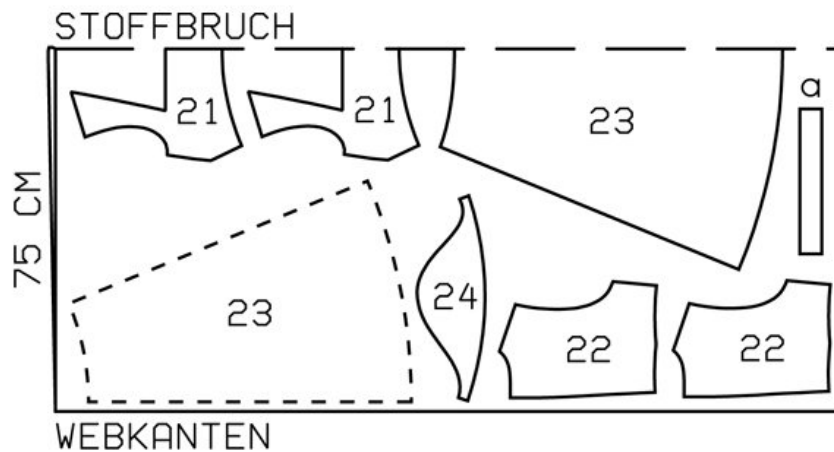
Empire-waisted, bubble hem dress burda style magazine patterns FAQ

## Materials

Crinkled linen

---

## Step 1 — Preparation



107 34-42

Trace the pattern pieces from the pattern sheet. Follow lines and details for style 107. Note different lines for upper front and back of skirt -panel.

Seam and hem allowances:

Seams and edges 1.5 cm (5/8 in).

---

## Step 2 — Cutting Out



Linen:

21 front, on a fold 2x

22 back 4x

23 front skirt panel, on a fold 1x

23 back skirt panel 2x

24 sleeve 2x

a) 2 sleeve bands, 28 — 29 — 30 — 31 — 32 cm (11 1/8 — 11 1/2 — 12 — 12 1/4 — 12 3/4 ins) long, 4.5 cm (1 7/8 ins) wide, finished width 2.2 cm (a scant inch).

Lining: piece 23 to lining line.

Vilene Bias Tape: Iron onto neck and armhole edges of inside -pieces.

---

### Step 3 — Darts

Stitch darts in bodice. Press bust darts down. Press back darts toward centre. Stitch side seams and shoulder seams. Press seam allowances open.

---

### Step 4 — Stitching and basting inner and outer pieces

Pin inner and outer pieces right sides together. Stitch along neck edge. Trim seam allowances and clip into corners. Turn right side out and press neck edge. Baste remaining edges together.

---

## Step 5 — Sleeves

Stitch sleeve seams. Stitch ends of each sleeve band together to form a ring. Gather lower edges of sleeves between asterisks. Stitch sleeve bands to lower edges of sleeves. Press seam allowances onto sleeve bands. Fold sleeve bands half to inside. Turn in inside edges and baste. Topstitch sleeve bands close to joining seams.

---

## Step 6 — Setting in sleeves

Set in sleeves, easing sleeve caps.

---

## Step 7 — Stitching skirt to bodice

Stitch side seams on skirt panels. Stitch skirt to bodice. Press seam allowances up.

---

## Step 8 — Zipper

Sew invisible zip to back opening edges. Stitch centre back seam from lower edge to zip. Turn in top ends of zip tape and sew in place.

---

## Step 9 — Stitching skirt lining and leaving openings for zip and elastic

Stitch centre back seam of skirt -lining, leaving opening for zip slightly longer than on outer fabric and -leaving an opening, about 2 cm (3/4 in) long, at bottom to insert elastic. Stitch side -seams.

---

## Step 10 — Lining and elastic casing

Stitch lining right sides together with lower edge of skirt. Lay lining down and press. Stitch as marked to form elastic casing. Place lining inside skirt with wrong sides facing and sew to seam allowances of skirt joining seam, stitching as far as possible at zip. Sew lining to zip tapes.

---

## Step 11 — Pulling elastic into hem casing

Pull elastic into hem casing Sew ends of elastic together for a finished circumference of 92 — 96 — 100 — 104 — 108 cm (36 1/4 — 37 3/4 — 39 1/2 — 41 — 42 1/2 ins). needle.

---

**BurdaStyle**

5/2010 Empire-waisted, bubble hem dress