

4/2010 Lace-detail dress

By: burda style magazine

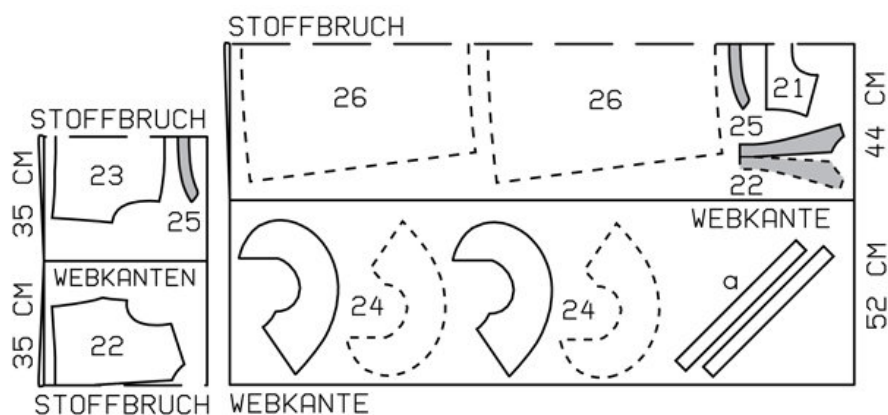
<http://www.burdastyle.com/projects/42010-lace-detail-dress>

Lace-detail dress burda style magazine patterns FAQ

Materials

Silk batiste and tulle lace

Step 1 — Preparation



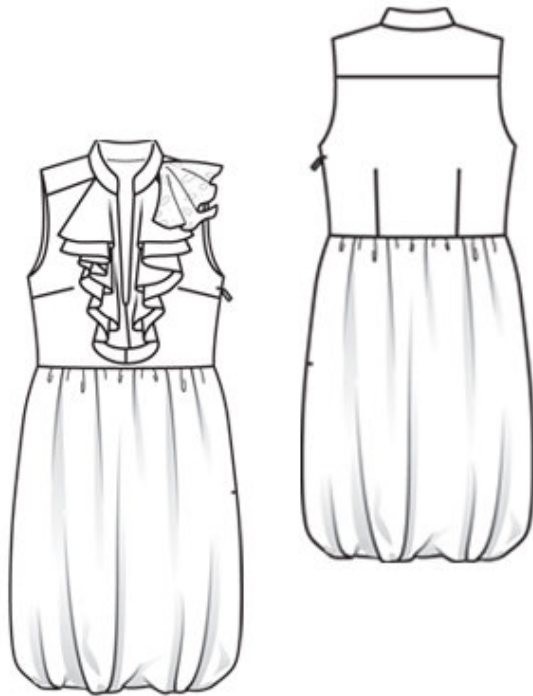
104 36-44

Trace the pattern pieces from the pattern sheet. Trace the front facing from piece 22 as a separate pattern piece.

Seam and hem allowances:

Seams and edges 1.5 cm (5/8 in), lower edge of skirt piece 2 cm (3/4 in).

Step 2 — Cutting Out



Silk batiste:

21yoke, on a fold 1x

22front, on a fold 1x

23back, on a fold 1x

24flounce 4x

25standing collar, on a fold 2x

26skirt, on a fold 2x

27skirt, on a fold 2x

a) 2 bias strips for armhole edges, 46 — 48 — 49 — 51 — 52 cm (18 1/8 — 19 — 19 1/4 — 20 1/4 — 20 1/2 ins) long, 4 cm (1 5/8 ins) wide (incl. allowance).

Lining: pieces 21, 22 and 23, and -piece 26 to lining line.

Interfacing: See pattern layout. Iron a piece of interfacing to wrong side of fabric, over bottom of front slit.

Step 3 — Darts

Stitch darts in dress bodice pieces. Press bust darts down. Press back darts toward centre. Stitch yoke to bodice front and back. Press seam allowances onto yoke.

Step 4 — Skirt pieces

Gather upper skirt edges. Stitch front skirt piece to bodice front and stitch back skirt piece to bodice back. Press seam allowances up.

Step 5 — Right Side Seam

Stitch right side seam (seam number 5). Press seam allowances open

Step 6 — Zipper

Sew invisible zip to left opening edges. Stitch left side seam above and below zip.

Step 7 — Lining

Stitch darts and seams of lining. Leave an opening of 1 cm (3/8 in) at bottom end of one side seam to insert elastic. Stitch lining right sides together with lower edge of dress. Lay lining down and press. Stitch -seam allowances in place as marked to form for elastic casing. Lay lining up — wrong sides of dress and lining facing — and baste to neck and armhole edges. Turn in lining and sew to zip tapes. Stitch lining along marked slit lines. Trim seam allowances in between to a width of 5 mm (3/16 in), clipping at bottom to 2 mm (a scant 1/8 in) before marking.

Step 8 — Flounce pieces

Lay pairs of flounce pieces right sides together and stitch centre front seam from marking. Clip seam allowances at each marking. Trim seam allowances to a width of 7 mm (1/4 in), neaten together, and press to one side. Trim outer edge of flounce piece which lies on top by 1.5 cm (5/8 in), then measure and mark the 1.5 cm (5/8 in) wide allowance.

Step 9 — Neaten outer edges of flounces with closely spaced zigzag stitching

Press allowance to wrong side of fabric. Work from right side to stitch along fold edge at a short, closely spaced zigzag setting. Carefully trim allowance close to stitching.

Step 10 — Basting flounces

Lay top flounce on bottom flounce, with wrong side facing right side, and baste joining edges together. Trim seam allowances on rounded joining edges (from marking to corner) of flounce to a width of 5 mm (3/16 in). Baste flounces to neck edge and slit opening, spreading edges of slit apart.

Step 11 — Standing collar and front slit

Lay collar pieces right sides together. Stitch together on front and upper edges. Trim seam allowances. Turn collar right side out and press. Baste edges of collar together to neck edge. Trim and clip slit edges of front facing as instructed for front. Stitch facing right sides together with neck and slit edges, spreading edges of slit apart and catching collar and flounces. Stitch collar to neck edge from end of facing. Trim seam allowances. At back neck edge, neaten edges of allowances together. Turn facing to inside. Press seam allowances down. Sew facing to yoke joining seams.

Step 12 — Armholes

Fold bias strips in half lengthwise and press, right side fac-ing out. Turn in one end of each strip. Pin doubled bias strips to edges of armholes so that fold edge of each strip lies on garment piece, 1 cm (3/8 in) past seam line, and the open end lies over turned-in end. Stitch along lines of armholes. Trim seam -allowances. Lay bias strips over seam allowances into armholes and stitch to seam allow-ances, close to seam. Turn bias strips to inside and press edges. Sew fold edge of strips to lining by hand.

Step 13 — Elastic

Pull elastic into hem casing. Sew ends of elastic together for a circumference of 92 â— 96 â— 100 â— 104 â— 108 cm (363/4 â— 373/4 â— 301/2 â— 41 â— 421/2 ins).

Step 14 — Tulle lace

Gather tulle lace slightly at centre of one edge and sew to shoulder, next to collar joining seam.

BurdaStyle

4/2010 Lace-detail dress