

burda style magazine 01/2010 Skirt without zipper

By: burda style magazine

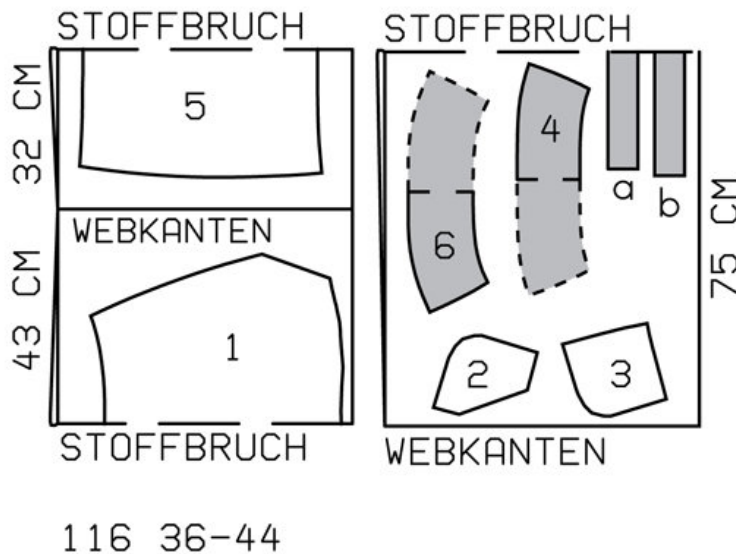
<http://www.burdastyle.com/projects/burda-style-magazine-012010-9>

Great skirt for work or dressing up burda style magazine patterns FAQ

Materials

Wool

Step 1 — Preparation

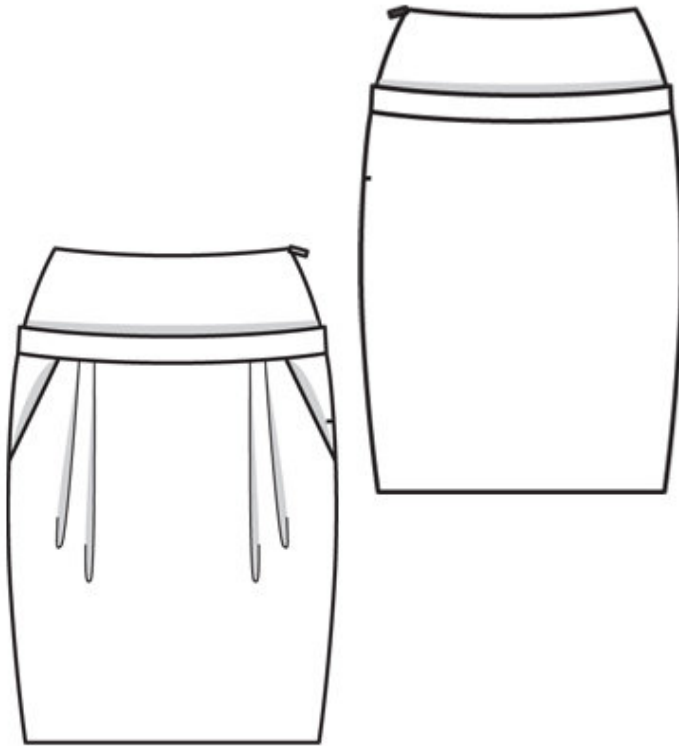


Trace the pattern pieces from the pattern sheet. Follow lines and details for style 116.

Seam and hem allowances:

Seams and edges 1.5 cm (5/8 in), hem 4 cm (15/8 ins). Flare hem allowances.

Step 2 — Cutting out



- 1 front skirt panel, on a fold x1
- 2 pocket piece x2
- 3 side hip yoke with
- â— integrated pocket piece x2
- 4 front yoke, on a fold x2
- 5 back skirt panel, on a fold x1
- 6 back yoke, on a fold x2

- a) front band, 45 â— 47 â— 49 â— 51 â— 53 cm (17³/₄ â— 18¹/₂ â— 19¹/₄ â— 20¹/₄ â— 21 ins) long, 6 cm (2¹/₂ ins) wide, finished width 3 cm (1¹/₄ ins),
 - b) back band, 47.5 â— 49.5 â— 51.5 â— 53.5 â— 55.5 cm (18³/₄ â— 19¹/₂ â— 20³/₈ â— 21¹/₈ â— 22 ins) long, 6 cm (2¹/₂ ins) wide, finished width 3 cm (1¹/₄ ins).
- Interfacing: See pattern layout. Interface outer yoke pieces.

Step 3 — Pleats

Fold pleats in front skirt panel in arrow direction and baste to upper edge.

Step 4 — Hip yoke pockets

Stitch pocket pieces to pocket opening edges of front skirt panels. Lay pocket pieces up and stitch to seam allowances, close to seam. Turn pocket pieces to inside. Pin pocket opening edges to side hip yokes at placement lines. Stitch inside edges of pocket pieces together. Baste pocket pieces to wrong side of front

skirt panel.

Step 5 — Side Seams

Stitch right side seam of skirt and yoke units (inside yoke unit as mirror image). Press seam allowances open.

Step 6 — Band

Lay front band on back band and stitch right side seam. Fold band in half lengthwise and press, right side facing out. Baste edges of band together to upper edge of skirt.

Step 7 — Yoke

Stitch outer yoke to upper edge of skirt, over band. Lay yoke and band up and press seam allowances down. Baste ends of band in place.

Step 8 — Face upper edge of skirt

Lay inside yoke unit right sides together with skirt and pin to upper edge of skirt. Turn yoke back at edge of zip opening, about 5 mm (3/16 in) before edge and pin to upper edge. At edge of opening, lay allowances of skirt outward and pin to upper edge of skirt, over yoke. Stitch along upper edge of skirt. Turn allowances at edge of opening to inside. Lay inside yoke up and stitch to seam allowances, close to seam, as far as possible. Turn yoke to inside and sew to zip tapes. Lay inside edge of yoke flat over joining seam. Work from right side to stitch along line of yoke joining seam.

Step 9 — Hem allowance

Press hem allowance to inside and sew in place by hand.

BurdaStyle

burda style magazine 01/2010 Skirt without zipper