

# burda style magazine 01/2010 Blouse

By: burda style magazine

<http://www.burdastyle.com/projects/burda-style-magazine-012010-1>

---

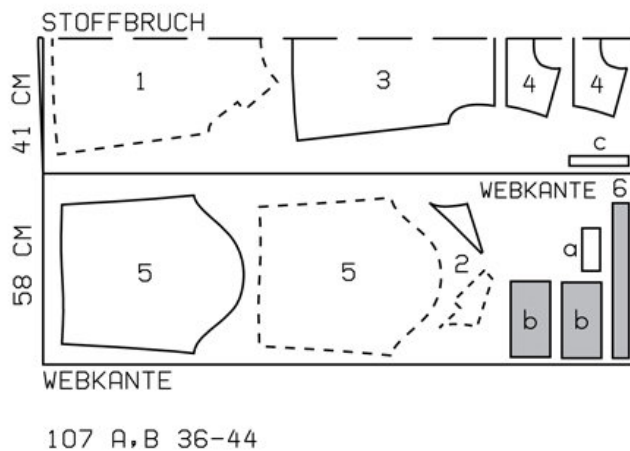
Light blouse perfect for the summer burda style magazine patterns FAQ

## Materials

Cotton and silk chiffon with crosswise stretch

---

## Step 1 — Preparation



Trace the pattern pieces from the pattern sheet. Note different lines for right seam and left fastening on front and on front yoke. Cut both halves of the front piece the same size initially from the double layer of fabric. Then trim the self-facing for the right yoke joining seam to 1.5 cm (5/8 in) before line marked "right seam".

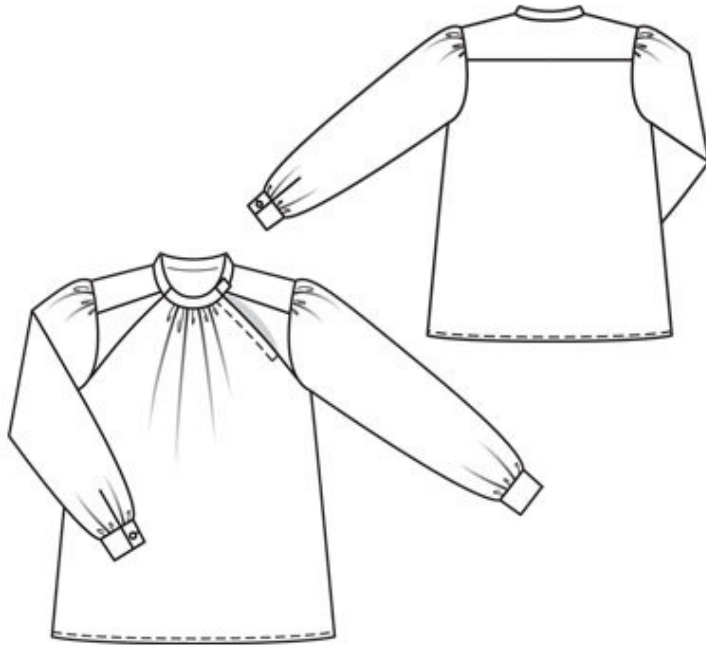
The stitching line on piece 1 is marked for size 36. For sizes 38–44, move the stitching line according to the size lines.

Seam and hem allowances:

Seams, edges and hem 1.5 cm (5/8 in).

---

## Step 2 — Cutting out



- 1 front, on a fold x1
- 2 front yoke x2
- 3 back, on a fold x1
- 4 shoulder yoke, on a fold x2
- 5 sleeve x2
- 6 standing collar x1

- a) band (collar), 12.5 — 13 — 13.5 — 14 — 14 cm (5 — 5 1/4 — 5 3/8 — 5 1/2 — 5 1/2 ins) long, 5.5 cm (2 1/4 ins) wide, finished width 2.7 cm (1 1/8 ins),
- b) 2 cuffs, 22.5 — 23 — 23.5 — 24 — 24.5 cm (9 — 9 1/8 — 9 1/4 — 9 1/2 — 9 3/4 ins) long, 12 cm (4 3/4 ins) wide, finished width 6 cm (2 3/8 ins),
- c) 2 binding strips for sleeve vents, 18 cm (7 ins) long, 3 cm (1 1/4 ins) wide — (incl. allowances).

Interfacing: See pattern layout.

---

### Step 3 — Yoke

Stitch right front yoke to front, from neck edge to marking. Stitch left front yoke to front, from slit mark to marking. Trim allowances of yoke joining seams to 5 mm (3/16 in) wide, neaten together and press down. Turn facing of left front yoke to inside on fold line, turn in and baste in place. Press edge. On self-facing of slit on front, trim away allowance on lengthwise edge. Lay self-facing to inside, turn half under, and press. Topstitch edge of slit lengthwise as marked. Stitch across bottom of slit, catching underlap.

---

## Step 4 — Yoke

Work from right side to pin one shoulder yoke to upper edge of back. Work from inside to pin other yoke to upper edge of back. Stitch yokes in place and press up. Stitch outer shoulder yoke to upper edges of front yokes. Press seam allowances up. Turn in inside yoke and sew to joining seams. Baste raw edges of yokes together.

---

## Step 5 — Side Seams

Stitch side seams. Trim seam allowances to 5 mm (3/16 in) wide, neaten together, and press onto back.

---

## Step 6 — Collar

Press allowances on narrow edges of band for collar to inside. Lay band on collar, between markings, with wrong side facing right side, and baste.

---

## Step 7 — Collar

Gather upper front edge between asterisks to 9  $\hat{=}$  9.5  $\hat{=}$  10  $\hat{=}$  10.5  $\hat{=}$  11 cm (3 1/2  $\hat{=}$  3 3/4  $\hat{=}$  4  $\hat{=}$  4 1/8  $\hat{=}$  4 3/8 ins). Stitch collar to neck edge, leaving collar extending at front edge of slit, from marking. Press seam allowances of joining seam and of other long edge onto collar. Fold collar on fold line, right side facing in. Stitch across ends of collar, laying seam allowances of joining seam down again at underlap. Turn collar right side out. Sew inside edge of collar to joining seam.

---

## Step 8 — Sleeves

Sleeve vents, see style 133. Stitch sleeve seams. Gather lower edges of sleeves to fit cuffs.

---

## Step 9 — Cuffs

Stitch cuffs to lower edges of sleeves. Press seam allowances of joining seam and of other long edge of cuffs onto cuffs. Fold cuffs lengthwise, right side facing in, and stitch across ends. Turn right side out. Baste inside edges in place. Sew inside edges of cuffs in place along joining seam. Work one buttonhole in front end of each cuff.

---

## Step 10 — Cuffs

Gather sleeves and set in.

---

## Step 11 — Hem allowance

Press hem allowance to inside, turn in, and stitch.

---

## Step 12 — Snaps

Fasten opening with 4 snaps. Fasten collar with 2 snaps.

---

**BurdaStyle**

burda style magazine 01/2010 Blouse