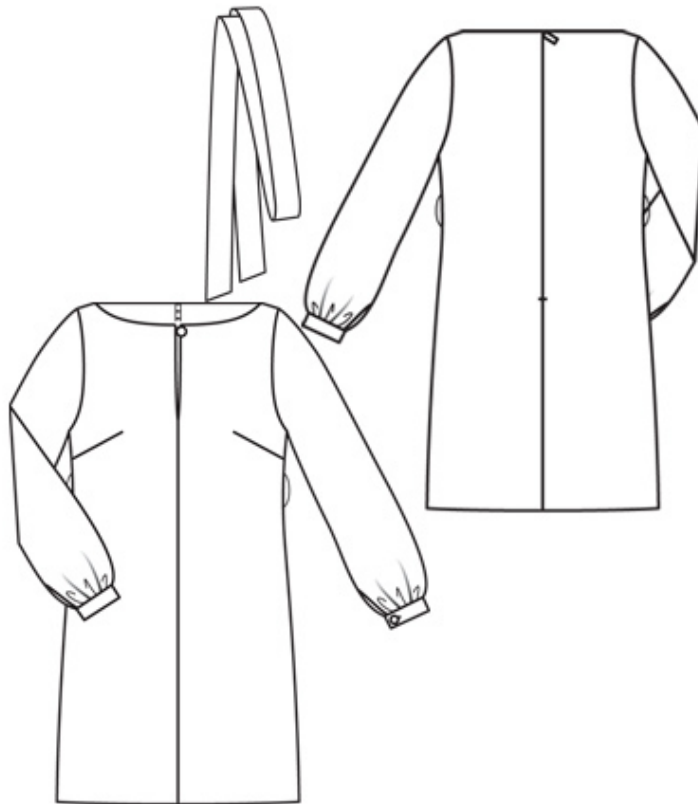


burda style magazine 1/2010 Belted Tunic Dress

By: burda style magazine

<http://www.burdastyle.com/projects/burda-style-magazine-12010-b>

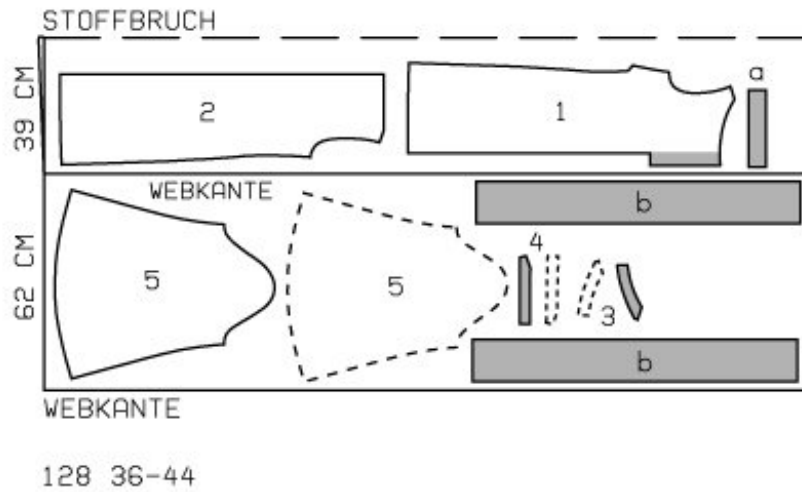


Belted Tunic Dress burda style magazine patterns FAQ

Materials

Silk Satin

Step 1 — Preparation

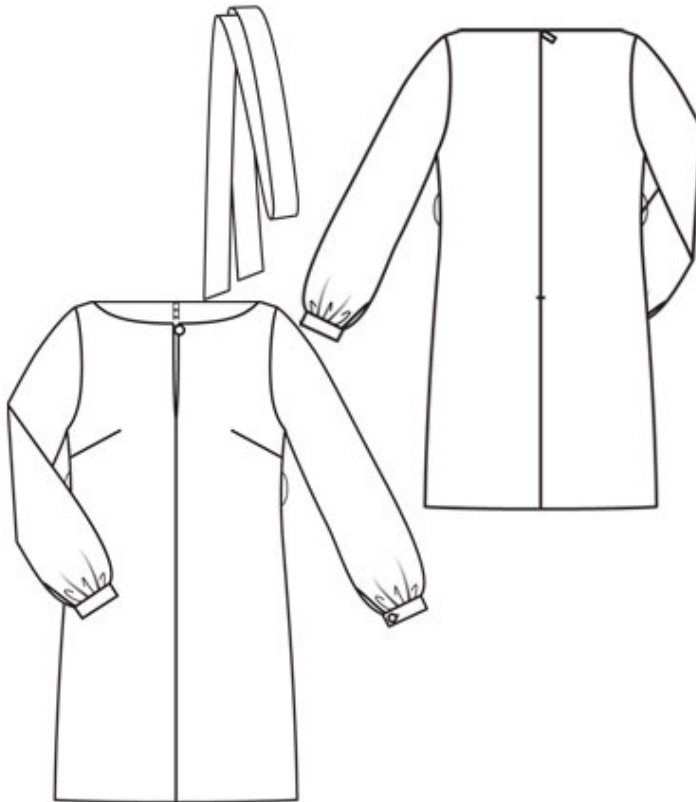


Trace the pattern pieces from the pattern sheet. Follow lines and details for style 128.

Seam and hem allowances:

Seams and edges 1.5 cm (5/8 in), hem 4 cm (15/8 ins), tie belt 1 cm (3/8 in).

Step 2 — Cutting Out



1 front 2x
2 back 2x
3 front neck facing 2x
4 back neck facing 2x
5 sleeve 2x

a) 2 cuffs, 21.5 — 22 — 22.5 — 23 — 23.5 cm (8 1/2 — 8 3/4 — 9 — 9 1/8 — 9 1/4 ins) long, 5 cm (2 ins) wide, finished width 2.5 cm (1 in),

b) tie belt, a total of 180 — 185 — 190 — 195 — 200 cm (71 — 72 3/4 — 75 1/4 — 76 3/4 — 78 3/4 ins) long, 12 cm (4 3/4 ins) wide, finished width 6 cm (2 3/8 ins).

Interfacing: See pattern layout. Interface the tie belt only if your fabric is very lightweight.

Step 3 — Zipper, Centre Back Seam

Sew invisible zip to back opening edges. Stitch centre back seam from lower edge to zip.

Step 4 — Bust Darts

Stitch bust darts. Press darts down.

Step 5 — Shoulder Seams

Stitch shoulder seams, beginning and ending exactly at marked neck edge. Stitch shoulder seams of facing in same manner. Press seam allowances open.

Step 6 — Neck-edge

Lay self-facings at edges of front opening outward and pin to neck edge. Pin neck facing right sides together with neck edge of dress — ends of front facing lie on self-facings at edges of opening. Turn facing at edge of zip opening back, about 5 mm (3/16 in) before edge of opening, and pin to upper edge. Lay allowances of dress at edges of opening to outside and pin to neck edge, over facing. Stitch along marked neck edge. Turn allowances on back opening edges to inside. Lay neck facing up and stitch to seam allowances, as far as possible, close to seam. Turn facing and facings on front opening edges to inside. Sew to zip tapes and baste to edges of armholes.

Step 7 — Centre Front Seam and Facings

Stitch centre front seam below slit mark. Press seam allowances open and press edges of opening to inside. Sew facings on front opening edges to neck facing.

Step 8 — Side Seams

Stitch side seams.

Step 9 — Sleeve Seams and Cuffs

Stitch sleeve seams, leaving vents open. Press seam allowances open and press edges of sleeve vents to inside. Topstitch 7 mm (1/4 in) from edges of vents. Gather lower edges of sleeves to fit cuffs. Stitch cuffs to lower edges of sleeves. Press seam allowances of joining seam and of other long edge of cuffs onto cuffs. Fold cuffs lengthwise, right side facing in, and stitch across ends. Turn right side out. Baste inside edges in place. Sew inside edges in place by hand.

Step 10 — Setting in sleeves

Set in sleeves, easing sleeve caps.

Step 11 — Hem Allowance

Press hem allowance to inside and sew in place by hand.

Step 12 — Button and Buttonhole

Make a thread loop at top corner of right front. Sew button to left front to match loop. Work one buttonhole in front end of each cuff.

Step 13 — Tie-Belt

Fold tie belt lengthwise, right side facing in. Trim ends at a slant. Stitch edges together, leaving a section of seam open for turning. Turn belt right side out. Sew opening closed.

Step 14 — Thread Loops

Work thread loops, about 7 cm (3 ins) long, over side seams as marked. To do this, stretch 3— 4 threads then cover them with closely spaced buttonhole stitching.

BurdaStyle

burda style magazine 1/2010 Belted Tunic Dress