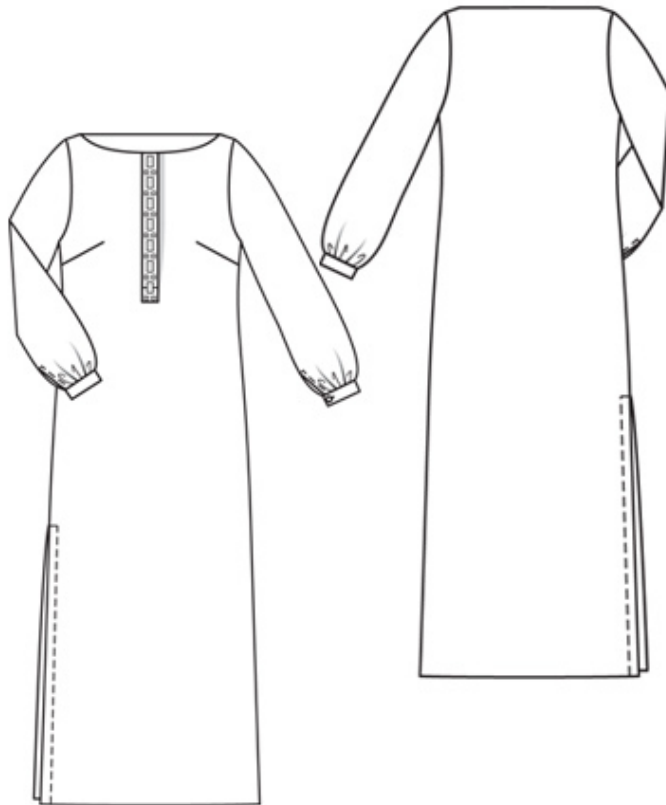


burda style magazine 1/2010 Long-sleeve Maxi Dress

By: burda style magazine

<http://www.burdastyle.com/projects/burda-style-magazine-12010-lo>

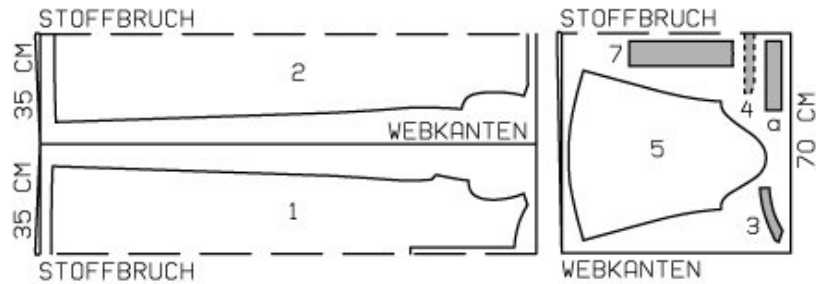


Long-sleeve Maxi Dress burda style magazine patterns FAQ

Materials

Satin

Step 1 — Preparation



131 36-44

Trace the pattern pieces from the pattern sheet. Follow lines and details for style 131. Lengthen pieces 1 and 2 as indicated.

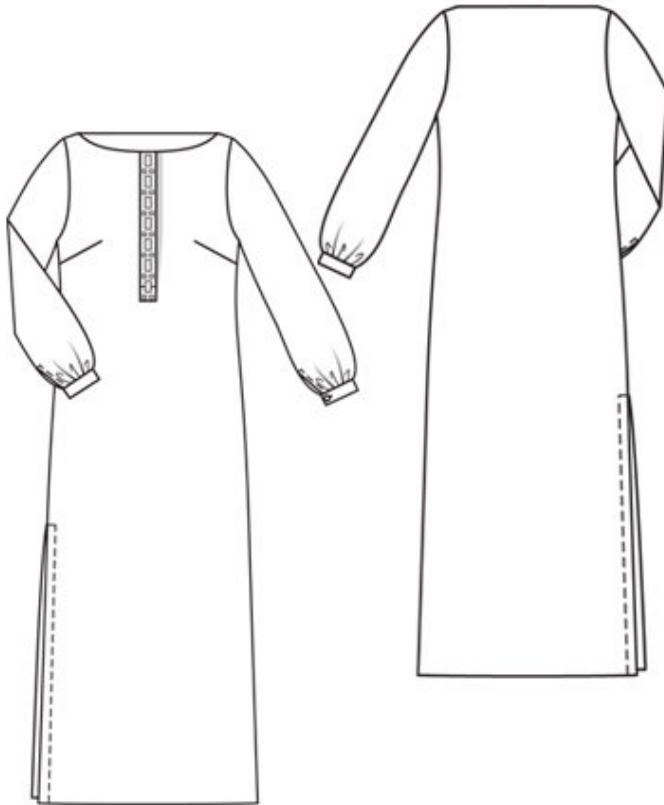
The snap fastener markings on piece 7 are for size 36. Sizes 38 — 44: Mark the top fastener the same distance from neck edge as for size 36. The bottom fastener is in the same place for all sizes. Centre the third fastener in between.

The stitching lines for the slits on pieces 1 and 2 are marked for size 36. For sizes 38 — 44, move the stitching lines according to the size lines.

Seam and hem allowances:

Seams and edges 1.5 cm (5/8 in), hem 4 cm (15/8 ins), side slit 3 cm (11/4 ins).

Step 2 — Cutting Out



1 front, on a fold 1x
2 back, on a fold 1x
3 front neck facing 2x
4 back neck facing, on a fold 1x
5 sleeve 2x
7 front band 2x

a) 2 cuffs, 21.5 â— 22 â— 22.5 â— 23 â— 23.5 cm (8 1/2 â— 8 3/4 â— 9 â— 9 1/8 â— 9 1/4 ins)
long, 5 cm (2 ins) wide, finished width 2.5 cm (1 in).

Interfacing: See pattern layout. Also iron interfacing to wrong side of front, over bottom corners of front placket fastening.

Step 3 — Bust Darts

Stitch bust darts. Press darts down

Step 4 — Shoulder Seams

Stitch shoulder seams, beginning and ending exactly at marked neck edge. Stitch shoulder seams of facing in same manner.

Step 5 — Facing Right Sides, Seam Allowances, Band

Stitch facing right sides together with neck edge. Trim seam allowances. Lay facing up and stitch to seam allowances, close to seam. Turn facing to inside and baste to joining edges of band and to edges of armholes.

Step 6 — Placket fastening

Stitch bands to vertical edges of front. Clip seam allowances of front into corners. Press seam allowances of band joining seams and of other long edges of bands onto bands. Fold each band on fold line, right side facing in, and stitch across top end. Turn bands right side out. Baste inside edge of bands to joining seams. Topstitch bands close to joining seams. Lay right band on left band and pin in place. Stitch bottom edges of bands together to front. Stitch across bands at bottom end, as marked.

Step 7 — Side Seams

Stitch side seams, leaving slit open in right side seam. Press seam allowances open and press edges of slit to inside.

Step 8 — Sleeves

Stitch sleeve seams, leaving vents open. Press seam allowances open and press edges of sleeve vents to inside. Topstitch close to edges of sleeve vents. Gather lower edges of sleeves to fit cuffs. Stitch cuffs to lower edges of sleeves. Press seam allowances of joining seam and of other long edge of cuffs onto cuffs. Fold cuffs lengthwise, right side facing in, and stitch across ends. Turn right side out. Baste inside edges in place. Topstitch cuffs close to joining seams.

Step 9 — Setting in sleeves

Set in sleeves, easing sleeve caps.

Step 10 — Hem Allowances

At hem, unfold allowances at slit edges out flat. Press hem allowance to inside and sew in place by hand. Turn allowances at slit edges to inside again, turn raw edges under, and stitch 1.5 cm (5/8 in) from slit edges.

Step 11 — Snaps

Sew top halves of snaps to inner side of right front band. Sew bottom halves of snaps to left front band. Work one buttonhole in front end of each cuff.

Step 12 — Gems

Sew large â— gemsâ— to right front band, along centre front. Sew two small â— gemsâ— to each space between large â— gemsâ— and to bottom end of band.

burda style magazine 1/2010 Long-sleeve Maxi Dress