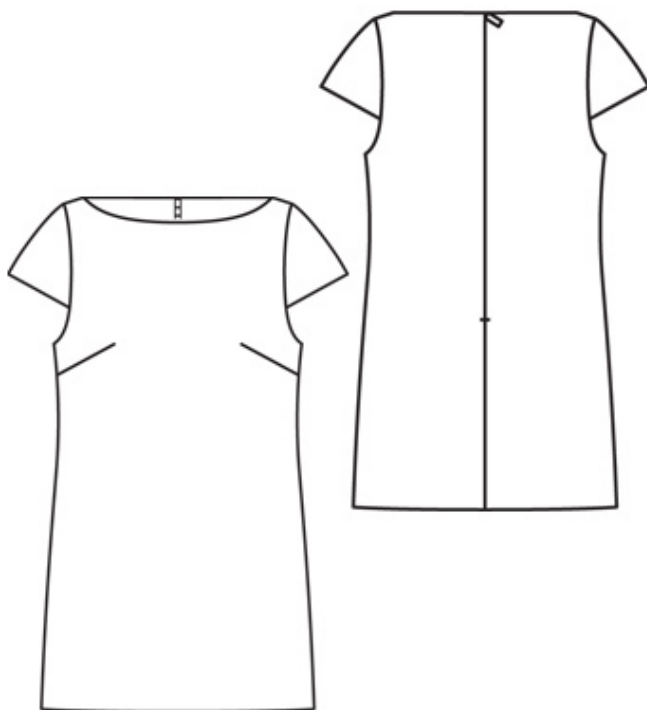


Cap Sleeve Shift Dress

By: burda style magazine

<http://www.burdastyle.com/projects/cap-sleeve-shift-dress>

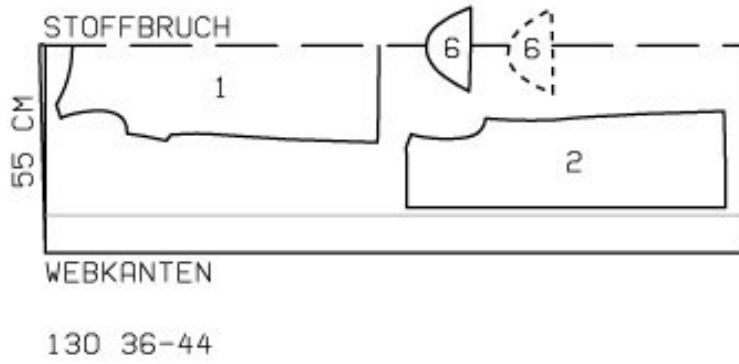


Cap Sleeve Shift Dress For more information on this and other burda style magazine patterns, please see this dedicated blog post.

Materials

Sequinned Fabric

Step 1 — Preparation

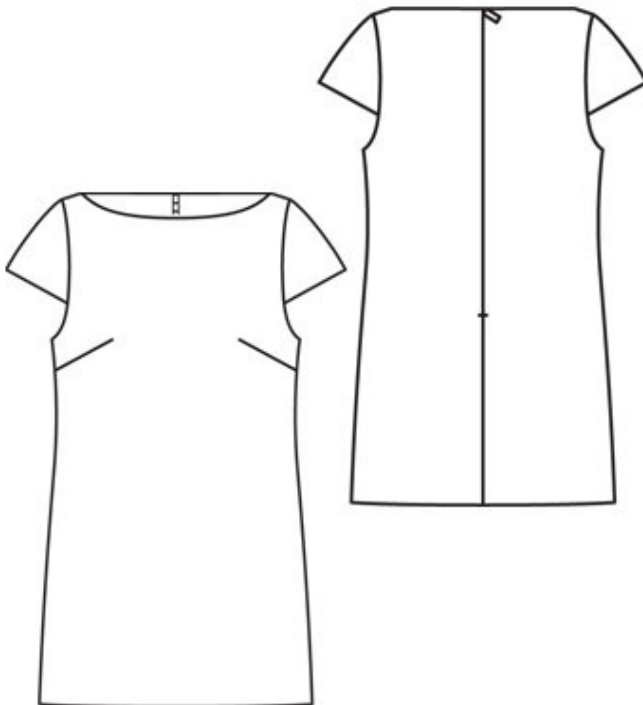


Trace the pattern pieces from the pattern sheet. Follow lines and details for style 130.

Seam and hem allowances:

Seams and edges 1.5 cm (5/8 in), hem 4 cm (15/8 ins), lining 1.5 cm (5/8 in).

Step 2 — Cutting Out



Sequinned fabric:

1 front, on a fold 1x

2 back 2x

6sleeve 2x

Lining:

3front neck facing, on a fold 1x

4back neck facing 2x

and also pieces 1, 2 and 6.

Interfacing: Iron onto facing pieces.

Step 3 — Zipper

Sew invisible zip to back opening edges. Important: The sequins sewn to the fabric may interfere with the function of the zip. Use pointed scissors to carefully remove sequins (without cutting the thread!) along the edges of the opening.

Step 4 — Centre Back Seam

Stitch centre back seam from lower edges to zip.

Step 5 — Bust Darts and Shoulder Seams

Stitch bust darts. Press darts down. Stitch shoulder seams, beginning and ending exactly at marked neck edge.

Step 6 — Sleeve Linings

Lay sleeve linings right sides together with sleeves and stitch lower edges together. Lay sleeve linings down and stitch to seam allowances, close to seam. Lay sleeve linings wrong sides together with sleeves and baste upper edges together. Stitch sleeves to armhole edges, above markings, easing sleeve caps.

Step 7 — Lining

Stitch darts in lining. Stitch shoulder seams and centre back seam, leaving opening for zip. Lay lining right sides together with dress. Stitch to edges of armholes, from each marking to side seam edge. Trim seam allowances. Turn dress right side out and press edges. Turn in lining at sleeve joining seams and sew in place. Baste lining to neck edge, without turning in, but turn in allowances at edges of opening.

Step 8 — Side Seams of Dress and Lining

Stitch side seams of dress and lining as continuous seams. Turn in lining and sew to zip tapes.

Step 9 — Shoulder Seams and Facings

Stitch shoulder seams of neck facing, beginning and ending exactly at marked shoulder seam line. Stitch facing right sides together with neck edge. Trim seam allowances. Lay -facing up and stitch to seam allowances, close to seam. Turn facing to inside. Press edge. Turn in facing and sew to zip tapes and to sleeve joining seams.

Step 10 — Hems

Press hem allowance to inside and sew in place by hand. Pin a fold in lining, about 1 cm (3/8 in) deep, above hem of lining. Turn in bottom edges of lining and sew to hem allowance. Remove pins at fold and press extra length of lining down.

BurdaStyle

Cap Sleeve Shift Dress