

# burda style magazine 03/2010 Wedding Dress

By: burda style magazine

<http://www.burdastyle.com/projects/burda-style-magazine-032010-v>

---

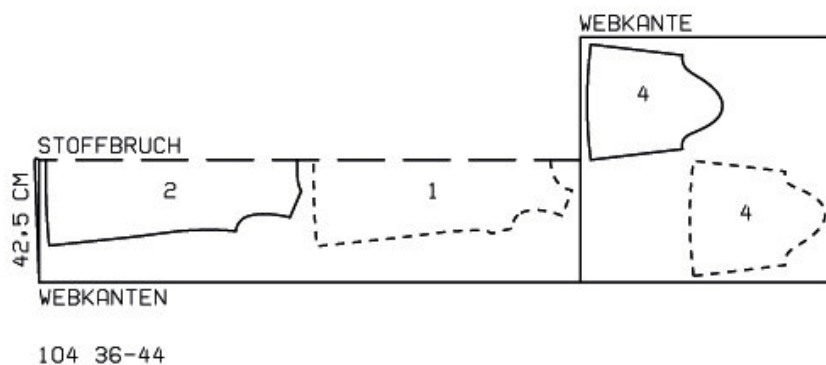
Wedding Dress. For more information on this and other burda style magazine patterns, please see this dedicated blog post.

## Materials

Guipure Lace

---

## Step 1 — Preparation



Trace the pattern pieces from the pattern sheet. Follow lines and details for size 104.

Seam and hem allowances:

Seams and edges 1 cm (3/8 in), no allowance at lower edges of front, back and sleeves. Cut lining pieces with 1 cm (3/8 in) seam and hem allowances.

---

## Step 2 — Cutting Out



Guipure lace:

1 front, on a fold x1

2 back, on a fold x1

4 sleeve x2

Fabric scrap (duchesse):

bias binding strip for back opening, 35 cm (13<sup>3</sup>/<sub>4</sub> ins) long, 3 cm (1<sup>1</sup>/<sub>4</sub> ins) wide (incl. allowance).

Lining:

5 front neck facing, on a fold x1

6 back neck facing x2

and also pieces 1 and 2.

Interfacing: Iron to facing pieces.

---

### Step 3 — Bust Darts

Stitch bust darts. Press darts down. Mark slit opening at centre back, with basting thread.

---

### Step 4 — Side Seams and Shoulder Seams

Stitch side seams and shoulder seams. Neaten seam allowances together and press onto back. Stitch facing seams.

---

## Step 5 — Lining

Stitch darts and seams of lining. Place lining inside dress, with right side facing wrong side, and baste to edges of neck and armholes. Baste lining closely around back slit marking. Slash back along centre, to marked end of slit.

---

## Step 6 — Facing right sides

Stitch facing right sides together with neck edge. At slash edges, trim extending allowances of facing. Trim seam allowances at neck edge. Lay facing up and stitch to seam allowances, close to seam. Turn facing to inside and baste to edges of back slit. Sew inside edge of facing to shoulder seams.

---

## Step 7 — Back Slit

Spread cut edges of back slit open to a straight line and stitch to one lengthwise edge of binding strip as narrowly as possible. Press binding strip over joining seam into opening. Turn in ends of binding strip and fold it to a width of 7 mm (1/4 in). Turn inside edge in and sew to joining seam. Work from the inside to mitre binding at bottom of slit. Fasten slit with a button and thread loop.

---

## Step 8 — Sleeve Seams

Stitch sleeve seams.

---

## Step 9 — Lace Trim

Cut a piece of lace trim for the hem, 116 — 120.5 — 125 — 130 — 134.5 cm (453/4 — 471/2 — 491/4 — 511/4 — 53 ins) long, and two pieces for lower edges of sleeves, each 40 — 41.5 — 43 — 44.5 — 46 cm (153/4 — 163/8 — 17 — 171/2 — 181/8 ins) long. Stitch ends of each piece of trim together, stitching 1 cm (3/8 in) from end. Pin trim to respective edges, with wrong side facing right side, so that scalloped edge meets lower edge. Stitch upper end of trim in place. Carefully trim away the fabric below trim leaving an allowance, about 7 mm (1/4 in) wide.

---

## Step 10 — Setting in sleeves

Set in sleeves, easing sleeve caps.

---

## Step 11 — Hem

Turn in hem allowance of lining and stitch so that lining is 2 cm (3/4 in) shorter than dress.

---

**BurdaStyle**

burda style magazine 03/2010 Wedding Dress