

burda style magazine 01/2010 Skirt

By: burda style magazine

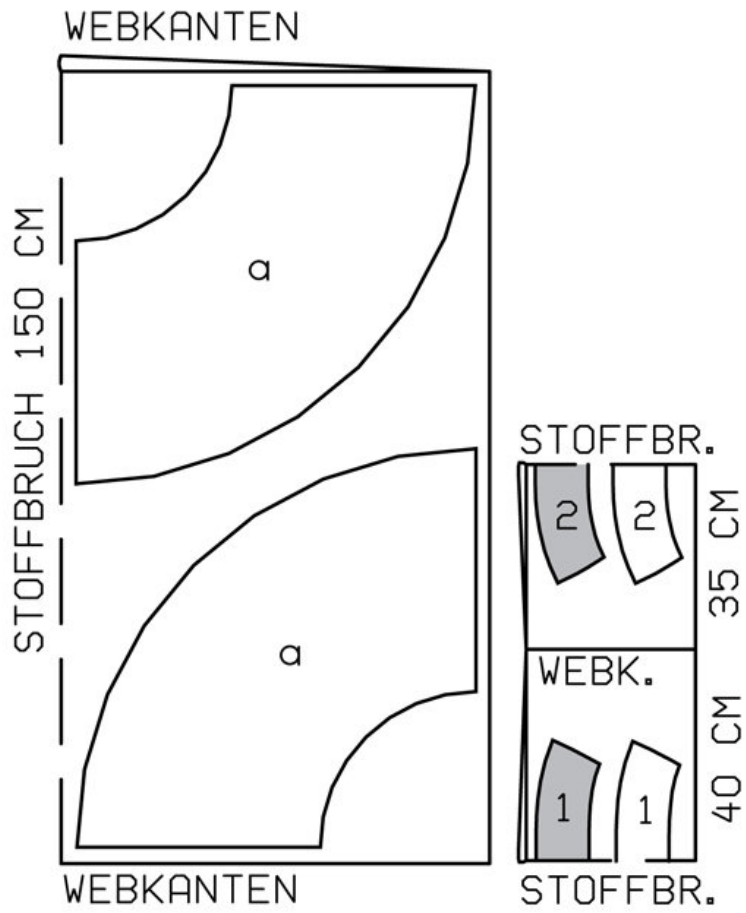
<http://www.burdastyle.com/projects/burda-style-magazine-012010-s>

Comfortable soft and flowing skirt. For more information on this and other burda style magazine patterns, please see this dedicated blog post.

Materials

Cotton and rayon

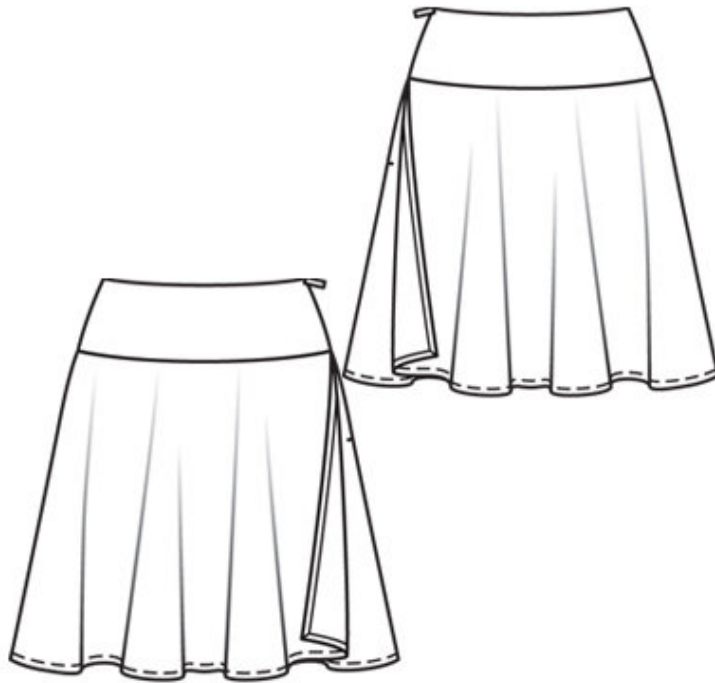
Step 1 — Preparation



108 A 34-44

Trace the pattern pieces from the pattern sheet.

Step 2 — Cutting out



Crpe:

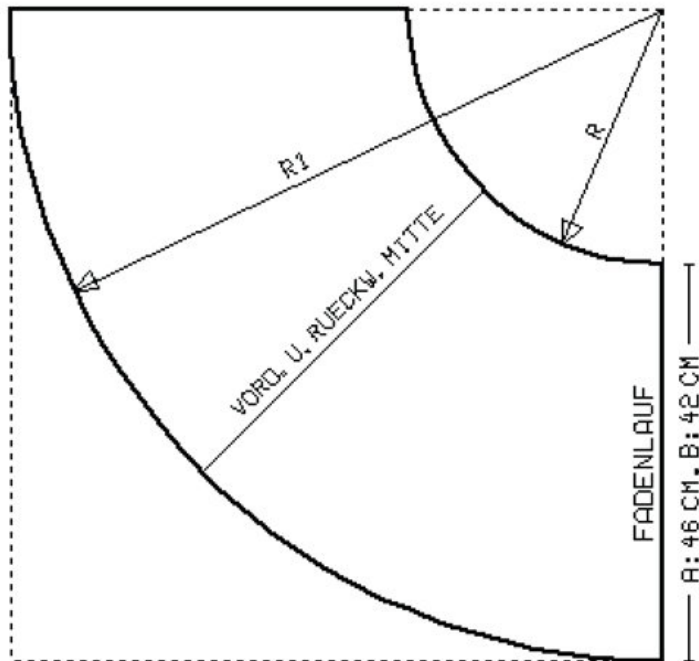
1 front yoke, on a fold x2

2 back yoke, on a fold x2

a) skirt panel x4 according to diagram.

Interfacing: See pattern layout. Interface outer yoke pieces.

Step 3 — Diagram



Follow the diagram to make a full-sized pattern piece for the skirt panel (a) as follows: On a large sheet of wrapping paper — the upper edge and the right edge must form a right angle — stretch a thread from the upper right corner to the radius \textcircled{R} for the waist edge. Also mark the hem line (R1). Or measure the length of the skirt down from the waist edge at several points and then connect the points in an even curve to mark the edge of the hem.

Seam and hem allowances:
Seams, edges and hem 1.5 cm (5/8 in).

Diagram — skirt panel

Radius waist edge \textcircled{R}

size 34: 26.9 cm, size 36: 28.2 cm

size 38: 29.5 cm, size 40: 30.7 cm

size 42: 32 cm, size 44: 33.3 cm

Radius for hem line (R 1)

size 34: 72.9 cm, size 36: 74.2 cm

size 38: 75.5 cm, size 40: 76.7 cm

size 42: 78 cm, size 44: 79.3 cm

Step 4 — Skirt

Lay 2 skirt panels each together for skirt and overskirt. Stitch right side seam of each.

Step 5 — Hem allowance

Press hem allowance and allowance on left side edges of overskirt to inside, turn in and stitch. Lay overskirt on skirt, with wrong side facing right side. Baste upper edges together. Leave side seam allowances of skirt extending.

Step 6 — Yoke

Stitch right side seam of yokes, stitching inside yoke as mirror image of outer yoke. Stitch interfaced outer yoke to upper edge of skirt. Press seam allowances onto yoke

Step 7 — Zip

Sew invisible zip to left side edges of yoke and skirt, to slit mark. Stitch left side seam from lower edge to zip.

Step 8 — Upper edge

Face upper edge of skirt with inside yoke.

Step 9 — Stitch

Press hem allowance to inside, turn in and stitch.

BurdaStyle

burda style magazine 01/2010 Skirt