

Helena Skirt: A New Pattern Download!

By: burdastyle

<http://www.burdastyle.com/projects/helena-skirt-a-new-pattern-dov>



The Helena skirt is a brand new pattern download created by BurdaStyle member Sarah Magill. This adaptable skirt pattern would drape wonderfully in denim, cotton, twill or tweed. Take Sarah's cue from her sketches and try the skirt with front pockets and buttons, or for an easier project eliminate the front button placket and cut the front of the skirt on the fold. Perfect for the weather right now, you can wear this skirt with tights or leggings, with your favorite rock t-shirt, a vintage blouse or a cute jacket. We find this skirt pattern so versatile, that depending on the fabric used, the shape really works for a lot of different fashion personalities and styles. Have fun with it!

Materials

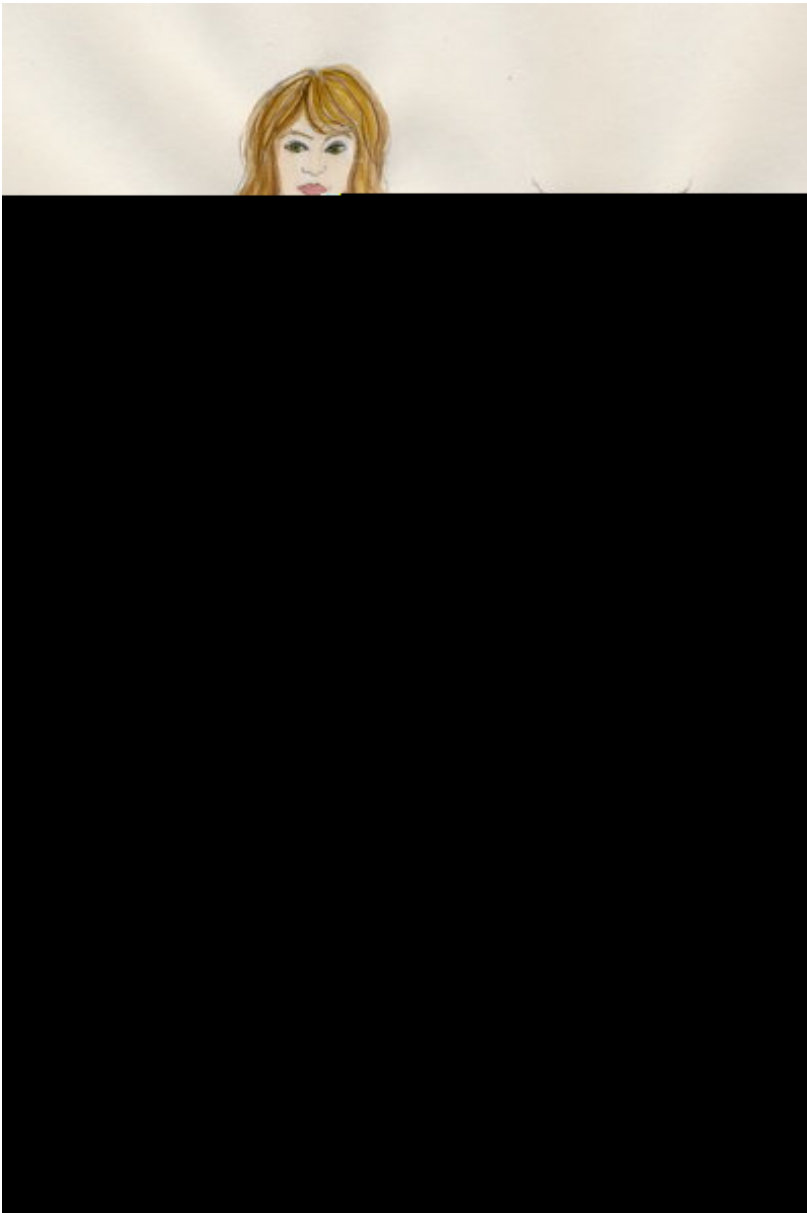
1.25m 150cm OR 1.5m 115cm (1.3 yds 65â€² OR 1.6 yds 45â€²) fabric â€¢ 6-8 buttons â€¢ Thread (matching or contrasting) â€¢ Interfacing (for waistband) Cotton twill, denim, chambray, medium to heavy linen, corduroy, needlecord, plaid, tweed

Step 1 — Size

UK Size	US equivalent	EUR equivalent	Waist	Hip
8	4	36	64 cm	88 cm
10	6	38	69	93
12	8	40	74	98
14	10	42	79	103
16	12	44	84	108
18	14	46	89	113

The Helena skirt was drafted on UK standard sizes. The waist and hip measurements and US/ EUR equivalents are shown below. Choose the size that matches your measurements best.

Step 2 — Yardage | Notions



Yardage/ notions:

- 1.25m 150cm OR 1.5m 115cm (1.3 yds 65â' OR 1.6 yds 45â') fabric
- 6-8 buttons
- Thread (matching or contrasting)
- Interfacing (for waistband)

Suggested fabrics:

Cotton twill, denim, chambray, medium to heavy linen, corduroy, needlecord, plaid, tweed

Customisation:

- Use contrasting thread for top stitching, attaching buttons and buttonholes
- Use decorative/ vintage or contrasting buttons
- Use twin or triple needle stitching on the hem

- Add pockets
 - Make the waistband deeper and add two buttons at the centre front
 - Lengthen/ shorten the skirt
 - Extend the button flap and add a double row of buttons (double-breasted skirt!)
-

Step 3 — Printing and constructing the PDF pattern

Printing and constructing the PDF pattern:

- Print out the 16 pieces with no paper scaling
 - Trim or fold borders under
 - Tape together as the chart below
 - Find your size (you will spot a stitching line -- and a cutting line ^)
 - Cut your pattern out following the cutting line ^ for your size
 - The seam and hem allowance is 1.5cm/ 5/8inch (you may want to extend the hem to suit the desired finished length or if you intend to have a deeper hem)
-

Step 4 — Trace Pattern



Wash your fabric, dry and press. Lay out your pattern pieces with the back skirt and waistband placed on a fold. Cut out your skirt pieces and transfer the markings (the pleats on the front and back and the fold lines at the centre front) using a tracing wheel and carbon paper, chalk or tailor tacks.

Step 5 — Fold & Press



Working on the centre front pieces, fold under the seam allowance, along the first fold line you have marked, and press. Now fold under again, on the second fold line, and press.

Step 6 — Top Stitch



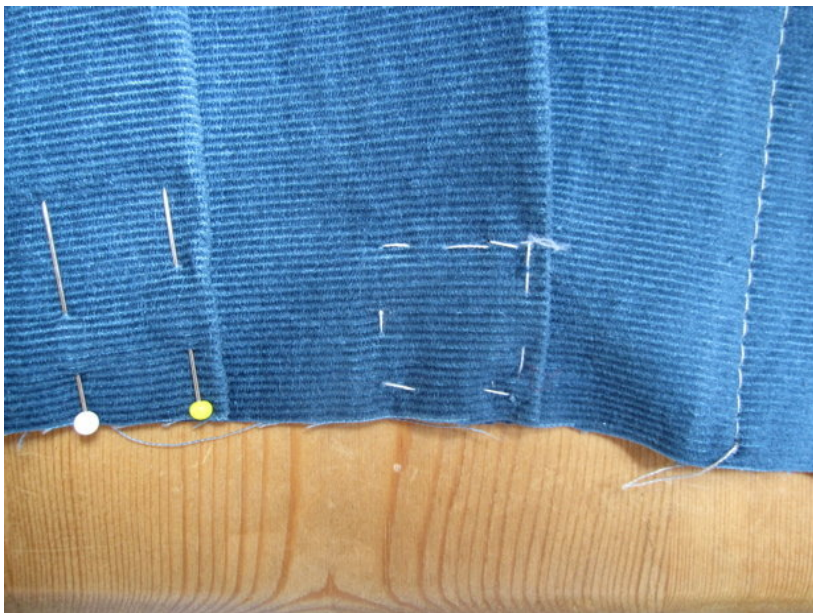
Top stitch from the right side down both sides of the button stand.

Step 7 — Pin & Finish edges



Pin the sides seams together, right sides together, and stitch 1.5cm/ 5/8 inch away from the edge. You may want to finish the raw edges by overlocking/ serging, zig-zagging, pinking or overcasting. Press the seams open or to one side if overlocked.

Step 8 — Pin Pleats



Pin your pleats together and tack in place. make sure they face towards the centre front on the front and towards the centre back on the back.

Step 9 — Interfacing



Cut a piece of interfacing to fit along one side of your waistband and iron on. Fold your waistband in half lengthways with right sides together. Stitch the ends closed, clip the corners off, turn to the right side and press, ensuring the corners are square. (You can adapt the waistband pattern to fit your exact waist measurement: measure your waist and half this measurement. This should be the length from the centre front line to the centre back line.)

Step 10 — Waistband



Pin the pleated edge of the skirt to the interfaced side of the waistband, right sides together. Try to match the ends of the waistband with the button stands exactly for a neat finish. Machine stitch and press seam upwards, into the waistband.

Step 11 — Stitch in the Ditch



On the underside of the waistband, turn the seam allowance under and pin in place (you may want to press the seam allowance under beforehand). You will now need to transfer the pins to the right side of the skirt in order to ditch stitch (stitching through the join of the seam on the right side to catch down the waistband on the underside). Very carefully, stitch through the join between the waistband and the skirt. Alternatively, you could slip stitch this instead.

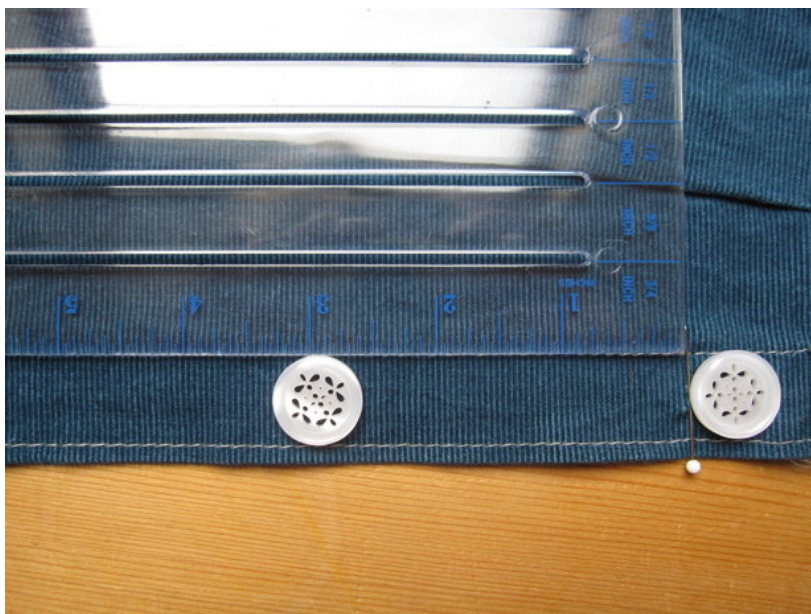
Step 12 — Hemming



The simplest way to hem the skirt is to overlock or zig zag the bottom edge and then turn up the desired amount and machine stitch. If your fabric frays easily you may want to turn the hem twice. Turn up the

desired amount and press, say 2.5cm/ 1 inch, then turn half of this underneath, press again and machine stitch. You could use a twin needle to add detail, as on the original skirt.

Step 13 — Buttons



Decide how many buttons you want to use and where you will position them (5-7.5cm/ 2-3 inches in-between is recommended). You must have one on the waistband and one just below, on the button stand, to prevent gaping. Mark buttonhole placements onto the button stand with chalk.

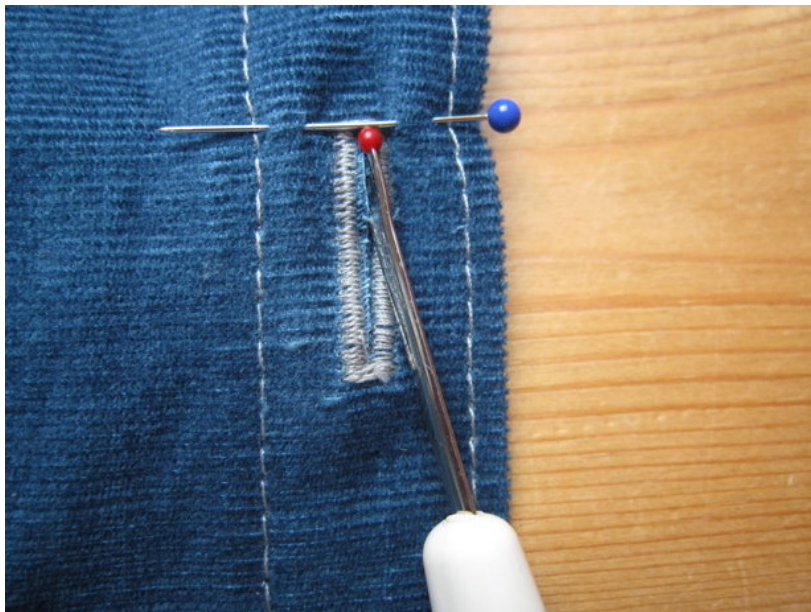
Step 14 — Buttonhole Stitch



If using an automatic buttonhole stitch, test it and position the sample on the skirt to see how it will look. Your buttonholes should be horizontal on the waistband and vertical on the button stand (the waistband takes

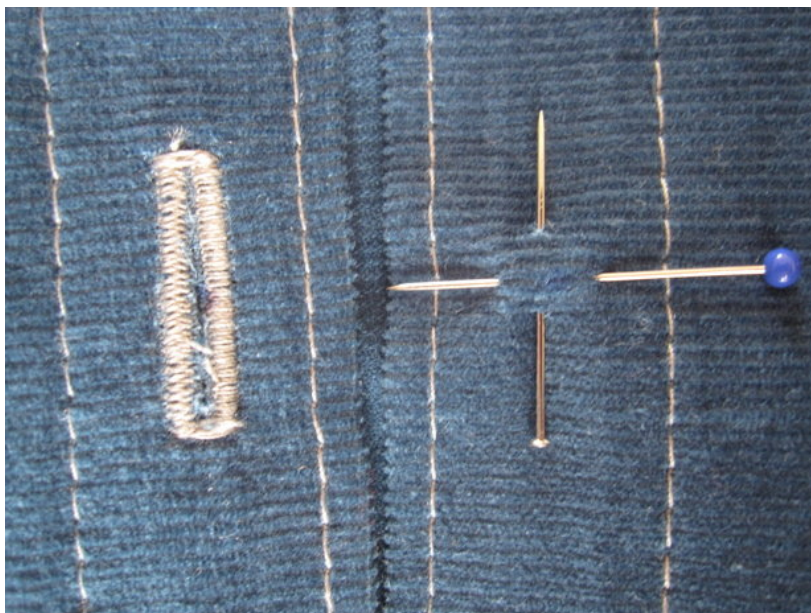
strain).

Step 15 — Open Buttonhole



Make the buttonholes and carefully cut openings with a seam ripper/ embroidery scissors.

Step 16 — Sew Buttons



Overlap the skirt fronts and pin together. Mark the button placements through the buttonholes. Attach your buttons, ensuring they sit on the centre front line and match up with the buttonholes.

Step 17 — Done!



Here is the finished product!

BurdaStyle

Helena Skirt: A New Pattern Download!