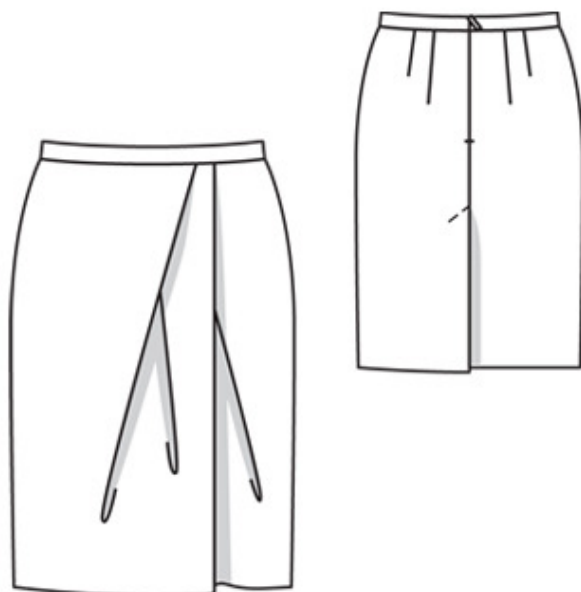


08/2010 Skirt with front pleats and vent

By: burda style magazine

<http://www.burdastyle.com/projects/082010-skirt-with-front-pleats-a>



Skirt with front pleats and vent burda style magazine patterns FAQ

Materials

stretch flannel

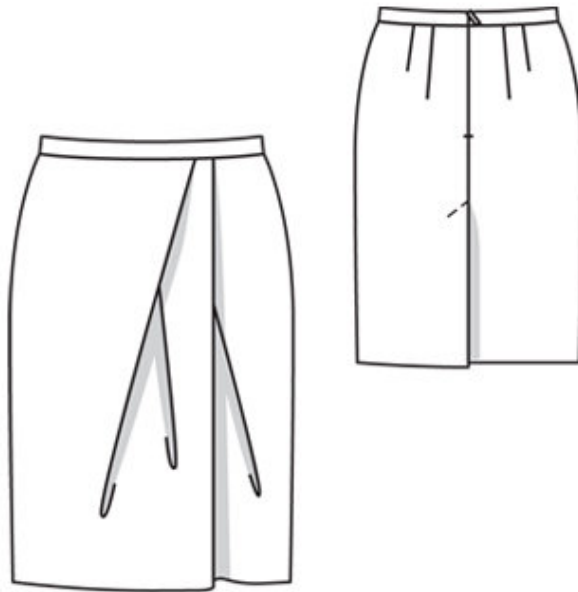
Step 1 — Preparation

Trace the pattern pieces from the pattern sheet. Glue pattern pieces 21 and 21a together on the joining lines. Lengthen pieces 22 and 23 as indicated. Note different lines for right and left edges of back vent but first cut the skirt panels the same size from the double layer of fabric.

Seam and hem allowances:

Seams and edges 1.5 cm (5/8 in), hem 3 cm (1 1/4 ins), lining 1.5 cm (5/8 in).

Step 2 — Cutting out



Flannel:

21 front skirt panel 1x

22 back skirt panel 2x

a) waistband, 84 — 88 — 94 — 100 — 106 cm (33 — 34³/₄ — 37 — 39¹/₂ — 41³/₄ ins) long, 6 cm (2¹/₂ ins) wide, finished width 3 cm (1¹/₄ ins).

Lining:

23 front skirt lining panel,

— on a fold 1x

piece 22 without vent allowance.

Interfacing: See pattern layout.

Step 3 — Pleats

Fold pleats in front skirt panel in arrow direction and press. Baste pleats to upper edge. Fold left half of front skirt panel on pleat fold line (pleat I), wrong side facing in. Press pleat fold and place at abutting line on left half of skirt panel. Baste pleat to upper edge of skirt panel. Then fold right half of skirt panel on pleat fold line (pleat II), wrong side facing in. Press pleat fold and place at abutting line, next to centre front. Baste pleat to upper edge.

Step 4 — Darts

Stitch darts in back skirt panels and press toward centre. Stitch side seams.

Step 5 — Waistband

Stitch waistband to upper edge of skirt. Press seam allowances of joining seam onto waistband. Fold waistband in half and press, wrong side facing in. Unfold waistband out flat again.

Step 6 — Zip

Sew invisible zip to back opening edges and outer half of waistband. Stitch centre back seam from vent to zip. Clip seam allowance of right back skirt panel slightly above vent. Press seam allowances open.

Step 7 — Hem Allowance

Press hem allowance to inside and sew in place by hand.

Step 8 — Vent

Press edge of back vent, noting different lines for right and left edges of vent. Trim facing on left edge of vent to a width of 5 cm (2 ins). Topstitch left back skirt panel diagonally at top of vent as marked, catching underlap. Sew slit facings in place, over the hem.

Step 9 — Stitch darts in lining

Stitch centre back seam and side seams, leaving openings for zip and vent. Stitch lining right sides together with inside edge of waistband. Place lining inside skirt, with wrong sides facing, folding waistband half to inside. Turn in edges of waistband and lining and sew to zip tapes. Work from right side of garment to stitch in line of waistband joining seam.

Step 10 — Hem

Turn in hem allowance of lining and stitch so that it is 2 cm (3/4 in) shorter than skirt. Cut out a generous piece of lining at the vent, rounding off corners. Hem edges of this cut narrowly.

BurdaStyle

08/2010 Skirt with front pleats and vent