

Heidi

By: burdastyle

<http://www.burdastyle.com/projects/heidi>



A fabulously easy dress that is a great basic with some nice design details and a beautiful neckline. The easy design allows easy design and fitting adaptations. Try to replace the front and back tuck with a princess seam if you would like a more fitted look and eliminate the pockets for a less sporty and more simplistic and sleek version.

Materials

printed satin, charmeuse, interfacing, hook and eye

Step 1

burda Download-Pattern dress 6016 - Instructions

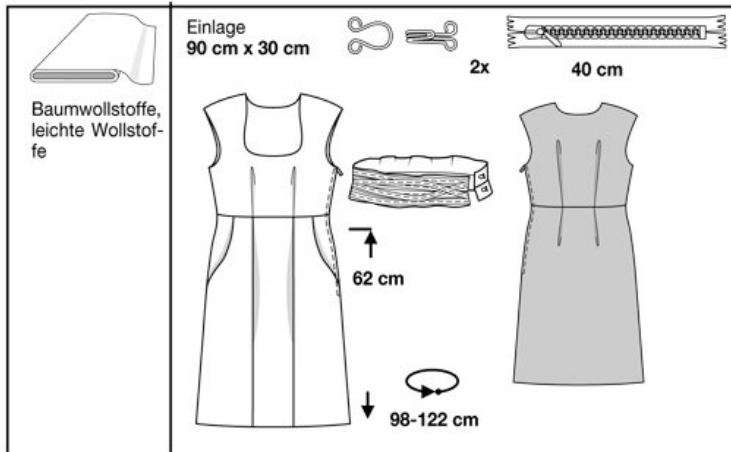


mittel

normal weit

| burda sizes | | 55 ins / 140 cm | | | | | | |
|-------------|-----|-----------------|-------|-------|-------|-------|-------|-------|
| | | 34 | 36 | 38 | 40 | 42 | 44 | 46 |
| Dress | yds | 2 1/2 | 2 1/2 | 2 1/2 | 2 1/2 | 2 1/2 | 2 1/2 | 2 1/2 |
| | m | 2.20 | 2.20 | 2.20 | 2.20 | 2.20 | 2.20 | 2.20 |
| Lining | yds | 1 1/4 | 1 1/4 | 1 1/4 | 1 1/4 | 1 1/4 | 1 1/4 | 1 1/4 |
| | m | 1.45 | 1.45 | 1.45 | 1.45 | 1.45 | 1.45 | 1.45 |

→ with nap

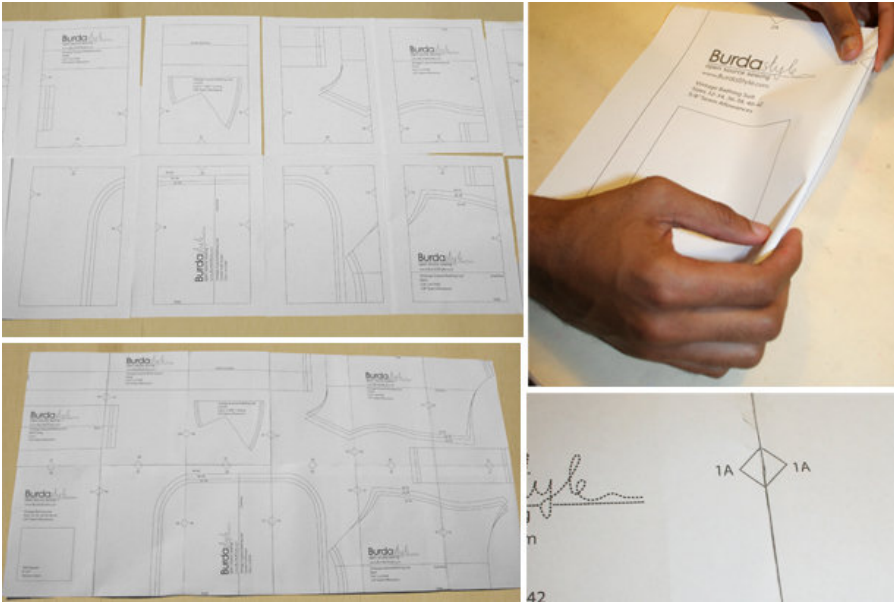


||

- 1 Front piece 1x
- 2 Front center skirt panel 1x
- 3 Front side skirt panel 2x
- 4 Pocket pouch 2x
- 5 Hip yoke piece 2x
- 6 Back piece 1x
- 7 Back skirt panel 1x
- 8 Lower front belt 1x
- 9 Lower back belt 1x
- 10 Top front belt 1x
- 11 Top back belt 1x
- 12 Strip 6x
- 13 Lining for front and back skirt panels 2x

Fabrics: Cotton, light wool fabric

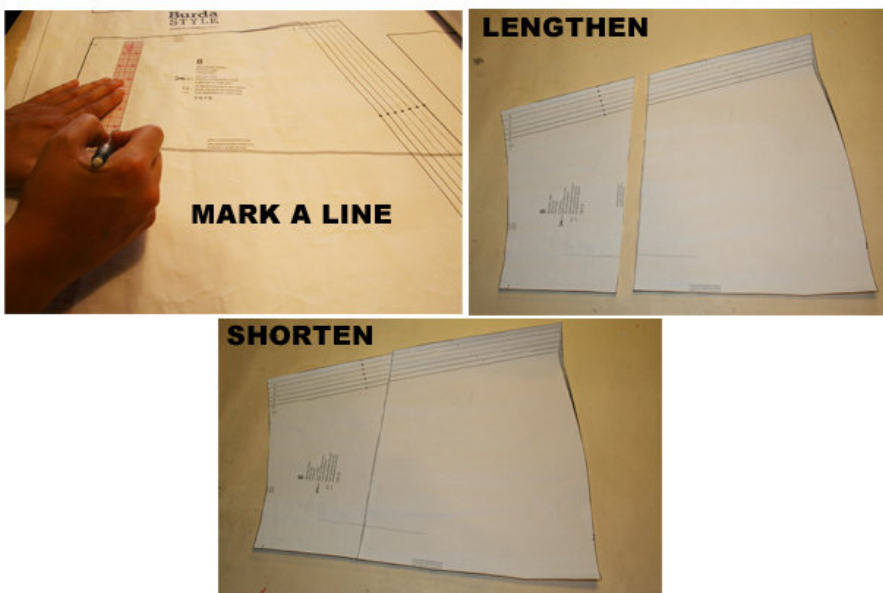
Step 2



The patterns can be printed out at the copy shop. If you decide to print them at home, follow the instructions: Paper cut for ANSI A (German DIN A4) prints:

The patterns are printed out on 40 sheets with a thin frame. Wait, until all sheets are printed out. Arrange the sheets so that they fit together (see extra page with the overview of the prints). Fold the single sheets on the upper and right edge along the thin frame lines. Begin with the left lower sheet and then tape the frame lines together precisely.

Step 3



ADJUST PATTERN SIZES

Select your size according to the Burda-dimension table: Dresses, blouses, jackets and coats according to the bust size, trousers and skirts according to the hip width. If necessary, change the pattern to fit your

measurements if they deviate from the Burda-dimension table. Cut out the pattern according to your size. Refer to our “ Adjust patterns for mixed sizes” technique

LENGTHENING OR SHORTENING THE PATTERN PIECES

Our pattern is calculated for a height of 5’ 6” (168 cm). If you are taller or shorter, you can adjust the pattern pieces along the lines marked “lengthen or shorten here”. Thus the proper fit is preserved. Always adjust all pattern pieces along the same line the same degree.

How to lengthen and shorten pattern pieces:

Cut the pattern pieces along the marked lines.

To lengthen, slide the two halves of the pattern piece as far apart as necessary.

To shorten, overlap the two halves of the pattern piece as far as necessary. Blend the side edges.

Step 4



CUTTING OUT

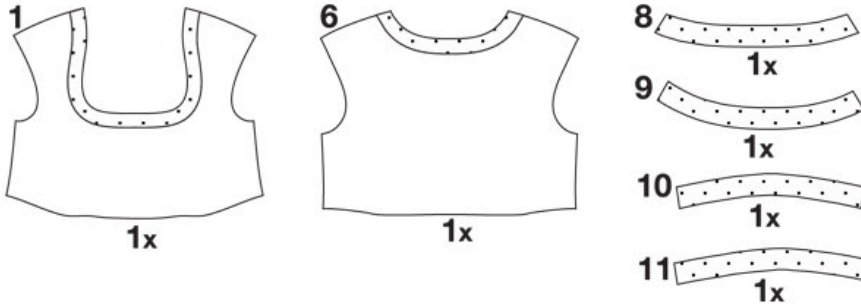
FOLD () means: here is the center of a pattern piece but never a cut edge or a seam. The piece should be cut double, with the fold line forming the centre line. Pattern pieces that are outlined with a broken line in the cutting diagrams are to be placed face down on the fabric. The cutting diagrams on the pattern sheet show how the pattern pieces should be placed on the fabric (a).

The cutting diagrams show the placement of the pattern on the fabric

For a single layer of fabric, the pattern pieces are pinned to the right side. For double layers of fabric, the right sides are facing and the pattern pieces are pinned to the wrong side. The pattern pieces that are shown extending over the fold of the fabric in the cutting diagram should be cut last from a single layer of fabric (b).

Step 5

INTERFACING



SEAM AND HEMLINE ALLOWANCES are included on an average:

5/8" (1.5 cm) for all edges and stitches. Using BURDA copying paper transfer the lines and signs of the pattern onto the wrong fabric side. You will find instructions in the packaging.

LINING

Cut the lining pieces 1, 6, 8 to 11 and 13. See cutting diagram. 5/8" (1.5 cm) seam allowances are included on average

INTERFACING

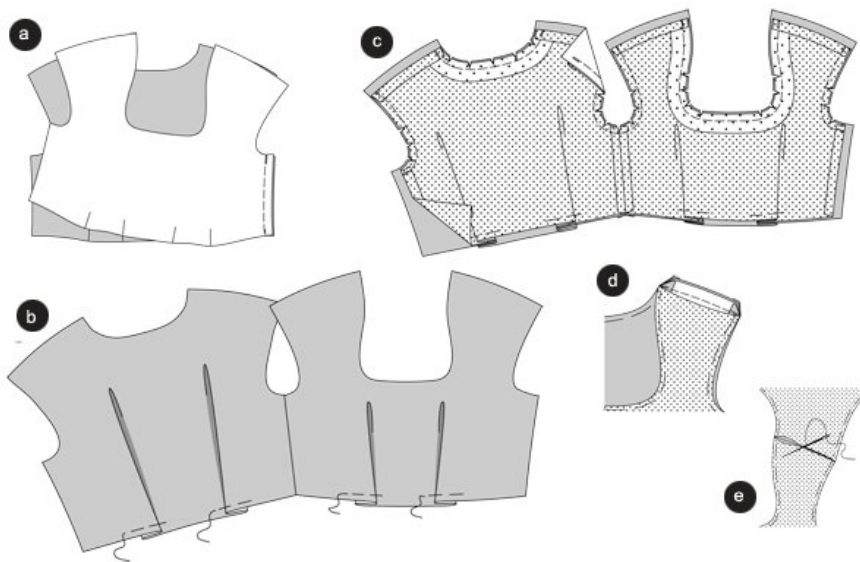
Cut out the interfacing 1 1/2" (4 cm) for the neckline pieces 1 and 6, and press it onto the wrong side of the lining. Cut out the lining for the belt according to the drawing and press onto the wrong fabric side.

SEWING

While sewing the right fabric sides are facing.

Transfer all lines of the pattern onto the right fabric side using basting stitches.

Step 6



TOP OF DRESS

Right side seam

Position the front piece on the back piece, right sides facing. Stitch the right side seam (seam 1). Neaten allowances and press apart (a).

PLEATS

Position the pleats of front and back piece as shown in figure (arrow), pin (b).

TOP LINING

Stitch the right side seams of the lining so the allowances are sandwiched between the self and the lining.. Press allowances apart. Pin the pleats. Press the allowances of the shoulder edges and opening edges to the inside.

NECKLINE and ARMHOLES

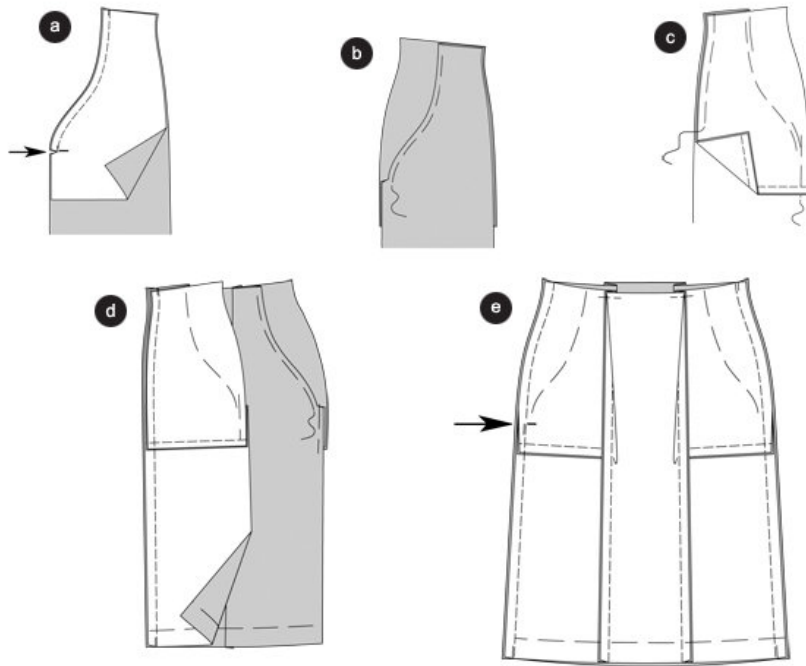
The shoulder seams of fabric and lining are still unstitched.

Pin the lining on the top piece, right sides facing. Pin the fabric and the lining together along the neckline and armholes, the side seams meet. Stitch the lining on the top neckline and armholes. Trim allowances, snip into the sleeve cap. Fold the lining inside. Baste the edges and press ©.

SHOULDER SEAMS

Position the front piece on the back piece, the right sides facing. Stitch the shoulder seams of the dress (seam 6), do NOT catch the lining. Trim the allowances at the seam ends in a slanting fashion. Press the allowances apart and push under the lining (d). Sew the shoulder seams of the lining together by hand (e).

Step 7



FRONT SKIRT PANEL / HIP YOKE POCKETS

Position the pocket pouches on the front side skirt panels, right sides facing. Baste the pocket opening edges together (seam 2) and stitch to the cross line (arrow). Trim allowances. Snip in the allowances from the cross line to the end of the stitch line. Fold the pocket pouch inside and baste. Press the edges (a).

Pin the front side skirt panel on the hip yoke piece in such a way that the pocket opening meets the marked line, right sides of pocket pouch and hip yoke are positioned together. Baste the pocket opening (b).

Baste the pocket pouches on the hip yoke piece, NOT catching the skirt panel. Stitch the lower edges together. Neaten the allowances together. Baste the side, top and lower edges of the hip yoke piece on the skirt panel ©.

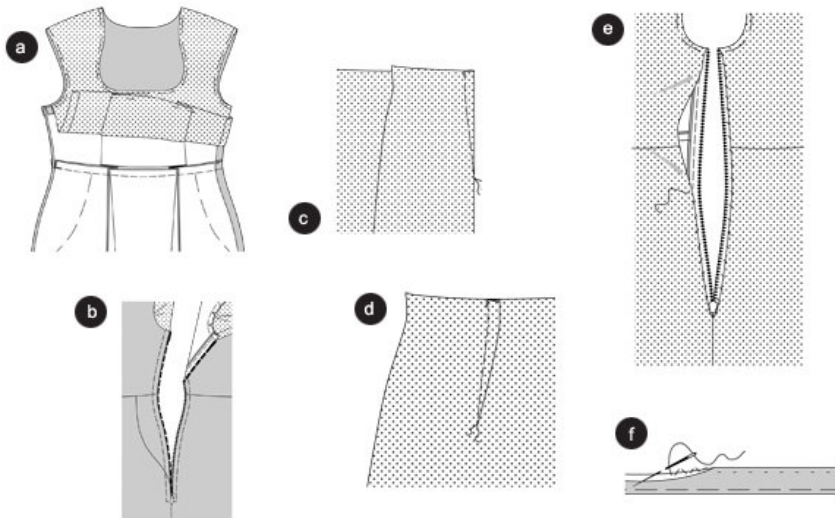
Front princess seams

Position the front side skirt panels on the front center skirt panels, right sides facing. Baste the princess seams (seam 3) and stitch. Trim allowances, neaten altogether and press inside the side skirt panels. Position the pleats of the front and back skirt panel as shown in figure (arrow), pin (d).

SIDE SEAMS / LEFT OPENING

Position the front skirt panel on the back skirt panel, right sides facing. Baste the side seams (seam 4) and stitch. NOTE, stitch the left side seam from the opening to the bottom. Secure seam ends. Keep the opening basted. Trim allowances and press apart. Open the basting stitches (e).

Step 8



TOPSTITCH THE SKIRT

Pin the skirt on the top, right sides facing. Side seams meet. The allowances along the opening stay open. Pin the skirt (seam 5) and stitch, NOT catching the lining. Trim allowances, neaten altogether and press inside the top (a).

ZIPPER

Fold the allowances along the opening to the inside.

Put the lining up. Pin the zipper under the opening edges in such a way that the little teeth are covered. Fold the strip ends at the armhole. Stitch the zipper using a zipper foot (b).

SKIRT LINING

Pin the darts and stitch in a slant. Knot the threads ©. Press the darts towards the center of the piece (d). Stitch the left side seam.

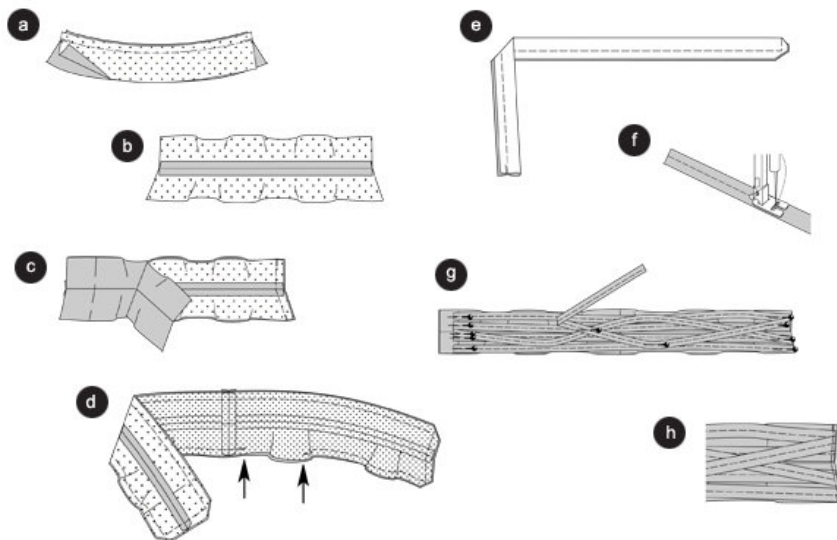
TOPSTITCH SKIRT LINING

Pin the lining skirt on the lining top, right sides facing. Side seams meet. Stitch. Press the allowances into the top. Press the allowances of the opening to the inside.

Pin the edges of the lining opening on the zipper straps and sew together by hand (e).

Neaten the hemline, fold and pin, press. Sew the hemline by hand (f)

Step 9



BELT

Pin the top front belt on the lower front belt, right sides facing. Stitch the center seam (seam 7). Stitch the back waist pieces together in the same way (seam 8) (a). Trim allowances and press apart (b).

Position the belt pieces together, stitch the side seams (seam 9). Trim allowances. Stitch the lining belt in the same way 10.

Pin the lining belt on the fabric belt. Right sides facing. Pin the edges together. The seams meet. Topstitch, thereby leaving an opening to turn the right side out (arrows). Secure seam ends. Trim allowances. Cut the edges in a slanting fashion. Turn the belt right side out.. pin the edges and press (d).

Strips

Fold the strips lengthwise, right side inside. Pin the long edges and the small edge $\frac{1}{2}$ " (1 cm) wide together and topstitch. Trim allowances. Turn the strips. Press. Topstitch the strips in the center (e).

Pin the strips on the belt according to your liking. Cut the long ends $\frac{1}{2}$ " (1 cm) next to the underlap (arrow) and neaten. Sew the strips at various spots [at intervals of 6" (15 cm)] by hand (f). Stitch the ends narrowly (g).

Close the belt through hooks and eyelets.

BurdaStyle

Heidi