

06/2011 Skirt with front pleats

By: burda style magazine

<http://www.burdastyle.com/projects/062011-skirt-with-front-pleats>



Skirt with front pleats burda style magazine patterns FAQ

Materials

Lightweight cotton satin

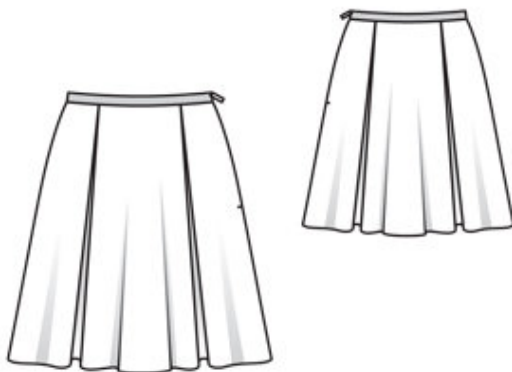
Step 1 — Preparation

Trace pattern pieces from pattern sheet. Follow lines and details for style 117. Note different hem lines for views A and B. Lengthen pieces 5, 6, and 7 as indicated for style 117 B. For the hem line, measure and mark several points 55 cm (21³/₄ in) below hem line for styles 117 A.

Seam and hem allowances:

Seams and edges 1.5 cm (5/8 in), hem 1 cm (3/8 in).

Step 2 — Cutting out



5centre skirt panel, on a fold 2x

6side skirt panel 4x

7pleat underlay 4x

Step 3 — Pleats

Press integrated pleats on centre and side skirt panels to inside on fold lines. Pin skirt panels to pleat underlay pieces — fold edges meet abutting lines. Stitch inside pleat seams, leaving about 10 cm (4 ins) open at bottom. Baste pleats to upper edge.

Step 4 — Right seams

Stitch right side seam.

Step 5 — Waistband

For the waistband, measure and cut two pieces of petersham ribbon, each 68 — 72 — 76 — 80 — 84 cm (263/4 — 281/2 — 30 — 311/2 — 33 ins) plus 1.5 cm (5/8 in) seam allowances at each end. Work from right side to lay one piece of petersham ribbon on seam allowance at upper edge of skirt and pin, slightly easing edge of skirt. Baste lower edge of ribbon in place. Pin second piece of ribbon to inside of waistband. Work from right side to topstitch waistband close to edges.

Step 6 — Zip

Sew invisible zip to waistband and left opening edges. Leave ends of zip tapes extending at upper waistband edge. Turn top ends of zip tapes under and sew in place. Edgestitch zip tapes to waistband. Stitch left side seam from lower edge to zip.

Step 7 — Lower edge

Neaten lower edge of skirt, press to inside, 1 cm (3/8 in) wide, and stitch. Stitch remainder of pleat seams, to hem edge. Turn bottom ends of seam allowances diagonally under and sew together.

BurdaStyle

06/2011 Skirt with front pleats