

Jorinde

By: burdastyle

<http://www.burdastyle.com/projects/jorinde>

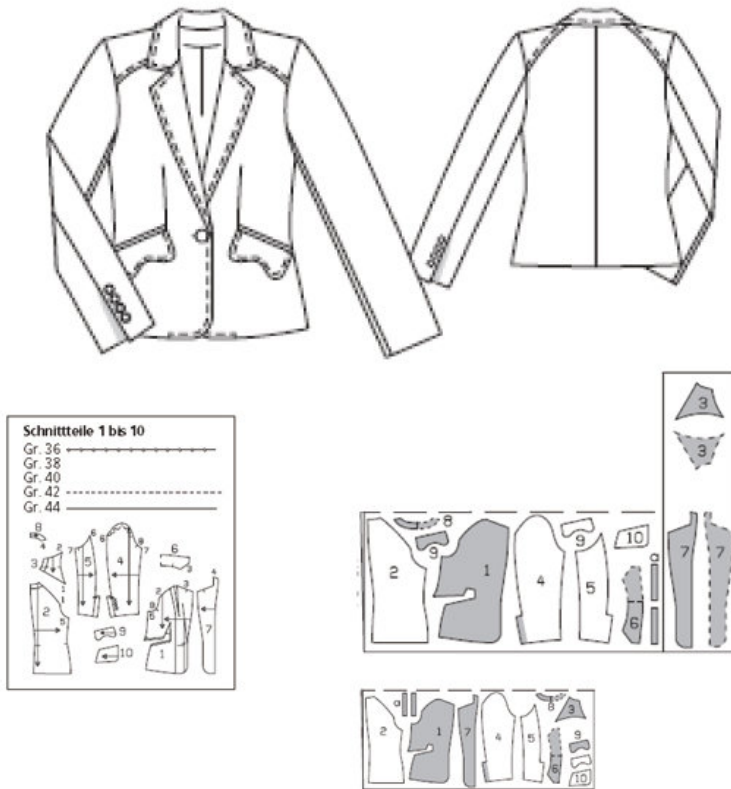


The Jorinde blazer is truly the jacket for all seasons. Make it in a corduroy or wool to carry you through the rest of winter, slide your cell into the flap pockets, and you're on your way. Or, try it in a lighter weight fabric to get prepared for spring. Give it the cool grandpa look by adding elbow patches, or go a bit more lady like and use some sparkling buttons on the sleeves!

Materials

Wide-rib corduroy, leather, leather buttons

Step 1



Fabric:

- 1 Front piece 2x
- 2 back piece 2x
- 3 Yoke 2x
- 4 Upper sleeve 2x
- 5 Lower sleeve 2x
- 6 Collar of the foldline 2x
- 7 Front facing 2x
- 8 back facing of the foldline 1x
- 9 Cover 4x
- 10 Pocket pouch 2x

Lining:

- 1 Front piece 2x
- 2 back piece 2x
- 3 Yoke 2x
- 4 Upper sleeve 2x
- 5 Lower sleeve 2x

10 Pocket pouch 2x

Fabric:

Striped fabric, cross striped, light jacket fabrics with some stability, 56" (140 cm) wide

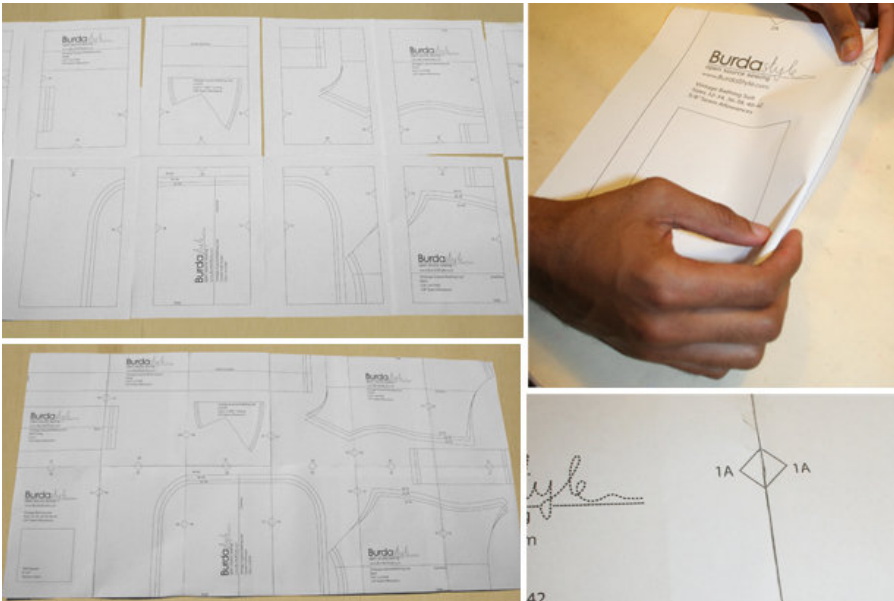
Sizes 4 (EU 36), 6 (EU 38), 8 (EU 40): 66" (165 cm) length

Sizes 10 (EU 12) and 12 (EU 44): 76" (190 cm) length

Lining: 56" (140 cm) wide, 58" (145 cm) long for all sizes:

Fusible bias tape, one big button and 8 smaller buttons, shoulder pads

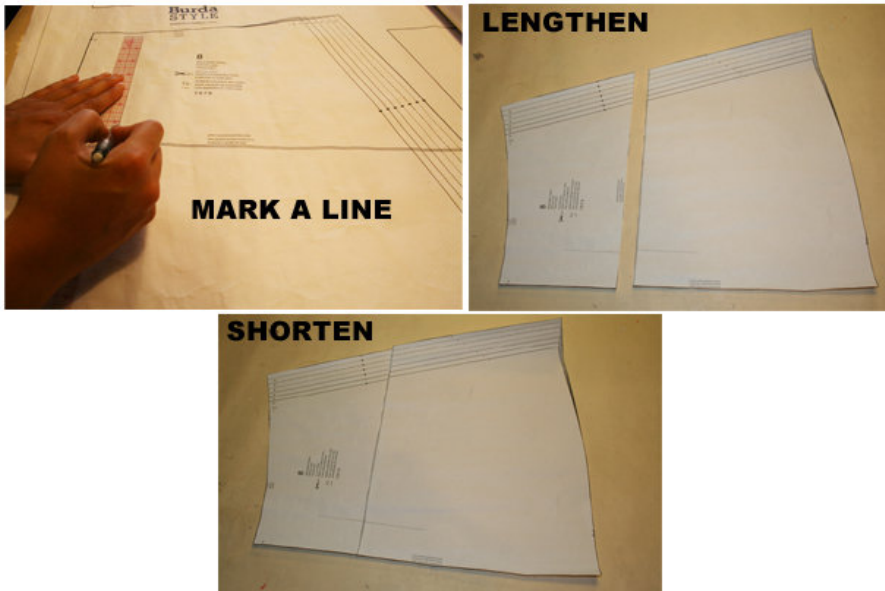
Step 2



The patterns can be printed out at the copy shop. If you decide to print them at home, follow the instructions:
Paper cut for ANSI A (German DIN A4) prints:

The patterns are printed out on 25 sheets with a thin frame. Wait, until all sheets are printed out. Arrange the sheets so that they fit together (see extra page with the overview of the prints). Cut off the single sheets on the upper and right edge along the thin frame lines. Begin with the left lower sheet and then glue the parts in the frame lines together precisely.

Step 3



ADJUST PATTERN SIZES

Select your size according to the Burda-dimension table: Dresses, blouses, jackets and coats according to the bust

size, trousers and skirts according to the hip width. Change the patterns accordingly if necessary, to fit your measurements if they deviate from the Burda dimension table.

Cut out the pattern according to your size.

Refer to our ‘ Adjust patterns for mixed sizes’ technique

LENGTHENING OR SHORTENING THE PATTERN PIECES

Our pattern is calculated for a height of 5â’ 6â’ (168 cm). If you are taller or shorter, you can adjust the pattern pieces along the lines marked “lengthen or shorten here”. This way the proper fit is maintained.

Always adjust all pattern pieces along the same line to the same degree .

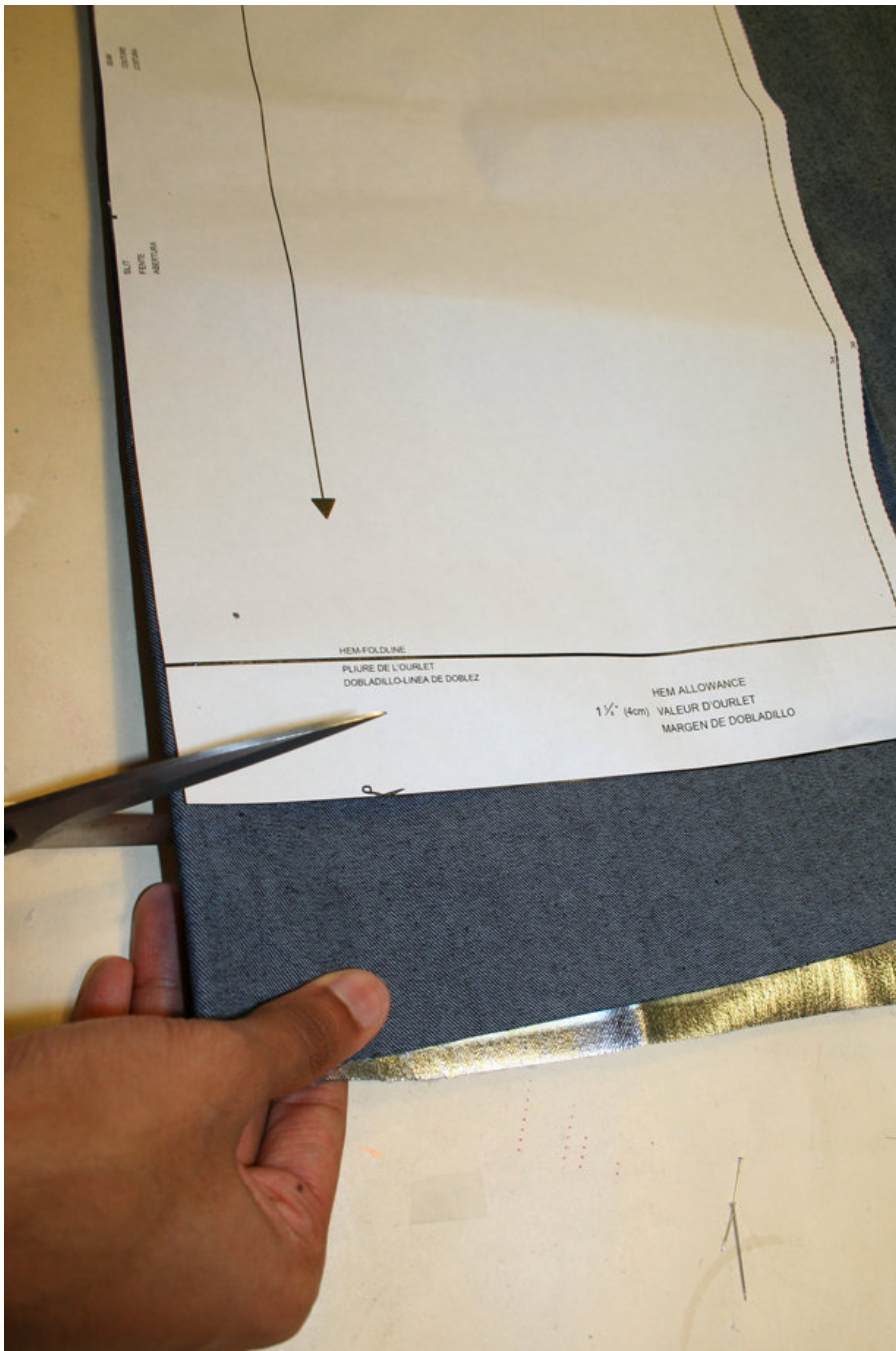
How to lengthen and shorten pattern pieces:

Cut the pattern pieces along the marked lines

To lengthen, slide the two halves of the pattern piece as far apart as necessary.

To shorten, overlap the two halves of the pattern piece as far as necessary. Blend the side edges.

Step 4



CUTTING OUT

FOLD (â’ â’ â’ â’) means: Cut on the fold, the fold being the center of the pattern piece, but never a cut edge or seam. The piece should be cut double, with the fold line forming the center line. Pattern pieces that are outlined with a broken line in the cutting diagrams are to be placed face down on the fabric. The cutting diagrams on the pattern sheet show how the pattern pieces should be placed on the fabric.

The cutting diagrams show the placement of the pattern on the fabric.

For a single layer of fabric, the pattern pieces are pinned to the right side. For double layers of fabric, the right sides are facing and the pattern pieces are pinned to the wrong side. The pattern pieces that are shown extending over the fold of the fabric in the cutting diagram should be cut last from a single layer of fabric.

The upper piping line in part 1 is to be used for size 12 (EU 44) only. For sizes 4 (EU 36) to size 10 (EU 42) the piping lines must be spaced in accordance to the line that marks the size for size 12 (EU 44). The button marks in part 4 have to be considered for size 4 (EU 36). For the other sizes adjust the marks according to the line that marks the size.

Step 5

SEAM AND HEMLINE ALLOWANCES are included on an average: 5/8" (1.5 cm) for all edges and stitches. Add 1/4" (5 mm) allowances to the pocket pouch edges (part 1) that have a scissor mark. Using BURDA copying paper, transfer the lines and signs of the pattern onto the wrong side of the fabric. Instructions can be found in the packaging.

Sewing

While sewing, the right sides of the fabric are facing.

Transfer all lines of the pattern onto the right side of the fabric using basting stitches.

Step 6

Piping pockets with covers, front dart:

Pin the piping straps onto the pocket edges (cross edges where the pocket opens) of the front pieces, the right sides are facing. Allow the piping straps to overlap approximately 1" (1 cm) along the front dart lines.

Stitch the piping along the seam line.

Do a diagonal cut along the front dart lines to the bottom seam end; do not enclose the piping straps. Press the allowances apart. Fold the piping straps around the pocket opening, inside the pocket and make sure that the width of the piping is distributed equally. Stitch along the seam line. Stitch the darts, thereby enclosing the piping ends. The fold lines of the piping meet. Press the darts towards the front center. Pin the lining onto the allowances of the lower piping, stitch narrowly along the allowances. End stitching 1/16" (2 mm) before the marked side seam. Press the pocket pouch downwards.

Fold the side pocket pouch edges back, and pin. Stitch an underlined and another not underlined cover piece on top of each other, the right sides are facing. Leave the edges open. Fold inside out. Stitch 1/4" (7 mm) wide along the edges. Push the cover edges through the pocket opening to the inside, and stitch narrowly along the piping edge onto the allowances. Pin the pocket pouches onto the allowances of the covers: stitch narrowly along the seam, from the allowance of the upper piping and end 2 mm before the marked side seam. Fold back the pocket pouches edges, and pin. Baste the pocket openings.

Stitch the back center seam. Press the allowances apart.

Cut the lapel darts around 2.5" (6 cm) into the center. Stitch the yokes onto the front pieces and the back pieces; seams 1 and 2. Stitch the yokes along the seams.

Stitch the side seams. Cut in the allowances of the front pieces, above and under the piping. Press the allowances above and under the cuts apart, between the cuts press to the backside. Remove the pins from the side pocket pouch edges. Trim the pocket pouches to equal size and stitch on top of each other.

Step 7

Lapel collar and front edges:

Topstitch the shoulder seam of the facing. Pin the facing onto the jacket, the right sides are facing. Try to extend the width at the lapel corners by pulling the facing slightly. Stitch the facing along the hemline, the front edges and the lapel edges to the cross line, thereby leaving the last 1â€ (2 cm) of the seam edges at the facing ends open. The facing will be positioned on the fabric, the right sides are facing.

Stitch the collar pieces along the edges on top of each other, starting at seam 3 thereby, again adjusting the width at the lapel corners. Turn the collar inside out. Move the collar between the body of the jacket and the facing. Stitch the under collar onto the neckline of the front piece; stitch from the cross line to the dart. Press the allowances apart. Stitch the long edge of the under collar onto the neckline: start at the back center line towards the shoulders. Continue stitching the edges of the lapel collar. Press the allowances of the collar edges apart, and press the dart flat.

Stitch the narrow side of the top collar onto the facing until you reach the corner. At the corners, cut the allowances of the facing. Stitch the long edges of the top collar. Press the allowances apart. Fold the facing inside. Press the seam allowances inside, but donâ€™t stitch them yet.

Pin the collar edges on top of each other, be exact. Fold the back facing to the top, and stitch the allowances, narrowly and close to the collar edge, on top of each other. Fold the facing down again.

Stitch the upper sleeve to the under sleeve at the front sleeve seams. Stitch the back sleeve from the sleeve cap to the slit at the top of the facing/underlay. At the upper sleeves, fold the facing on the upper sleeve and the underlay from the under sleeve and the seam allowances to the outside. Stitch the corners diagonally. Trim the allowances of the diagonal seam to ½â€ (5 mm) in width and press apart. Stitch the allowances of the under sleeve onto the long edge of the underlay. Fold the seam allowances and opening facing inside. Press the seam and facing edges, continue pressing the allowances of the long edges along the underlay. Stitch the back sleeve seams towards the opening slit. At the inner slit, stitch across the facing and underlay. Stitch the seam allowances together by hand. Apply the little buttons as marked, thereby enclosing the underlay.

Ease the sleeves (help the fabric edge by slightly pulling or pushing one edge onto the other along a seam), and apply them. Also, apply the shoulder pads.

Step 8

Lining:

Stitch the center seam across the back lining piece. Stitch the front darts from the marked pocket opening lines. Cut the allowance of the front dart line until you almost reach the seam. Stitch the pocket opening edges approximately ½â€ (5 mm) wide, on top of each other, from the corner to the side edge. Press the darts towards the front, and press the allowances downwards. Stitch the yokes onto the front pieces and the back piece, seams 1 and 2. Stitch the side seams. Stitch the sleeve seams. Apply the sleeves onto the armhole.

Line the jacket, hemline:

Fold the facing along the front jacket to the outside, the hemline is still open (unfinished hemline). Stitch the lining onto the inner facing edges. Fold the facing inside again. Stitch the allowance by hand. Fold the lining along the bottom jacket edge inside, press the fold line gently; then push the lining hemline up to give a loose fit to the lining. Pin it onto the jacket hemline.

The other open facing edges and the lining need to be stitched by hand. The extra that was given to the lining needs to be folded onto the hemline to straighten it out, press gently.

Stitch the sleeve lining:

At the upper opening end of the sleeve, pin the lining seam line onto the sleeve seam line, thereby moving the lining up to loosen it. Fold the lining back along the opening. Fold the lining of the bottom underlay part of the sleeve neatly, and pin. The part that was folded back, position now onto the opening and cut the underlay edge to a width of 1 cm. Cut it then 1 cm under the opening. At the corner cut 1 cm diagonally. Push the width of the lining up, fold it straight, then pin it straightened onto the opening edge of the upper sleeve and onto the underlay of the upper opening end. Fold the lower lining edge inside and pin it onto the hemline allowance. Stitch the lining onto both sleeves.

Stitch the front bottom edges/hemline edges from facing end. Stitch the lapel and the collar.

Apply a button hole onto the right front piece.

BurdaStyle

Jorinde